

HOLMES COUNTY ENGINEER'S OFFICE

GEODETIC SURVEY MARKER

STATION NAME WFR 222 ALIAS HM01

USGS QUAD HOLMESVILLE TOWNSHIP FRANKLIN - WAYNE CO.

TYPE OF MARK Brass Disk in Concrete SET BY HOLMES CO. ENG.

STAMPING ON MARK WFR 222 DATE SET SEPT. 2003

STATION LOCATION: AT THE JUNCTION OF WAYNE CO. COUNTY ROAD 90 AND
WAYNE CO. COUNTY ROAD 2. FOUND ON THE SOUTHEAST CORNER.

HORZ DATUM NAD83-86 HORZ ORDER 1ST METHOD GPS

LATITUDE 40-40-15.898109 LONGITUDE 81-55-25.346164

NORTH (y) meters 111697.449 EAST (x) meters 648724.569

NORTH (y) US feet 366460.714 EAST (x) US feet 2128357.191

CONVERGENCE 0-22-42.94 COMBINED FACTOR 0.99991859

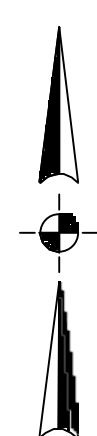
STATE PLANE COORDINATE SYSTEM ZONE: OHIO NORTH

VERT DATUM NAVD88 VERT ORDER 2ND

ELEVATION (z) meters 315.945 ELEVATION (z) US feet 1036.565

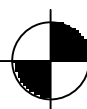
STATION REFERENCES

WFR 222



WAYNE CR 2

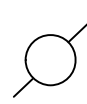
LEGEND



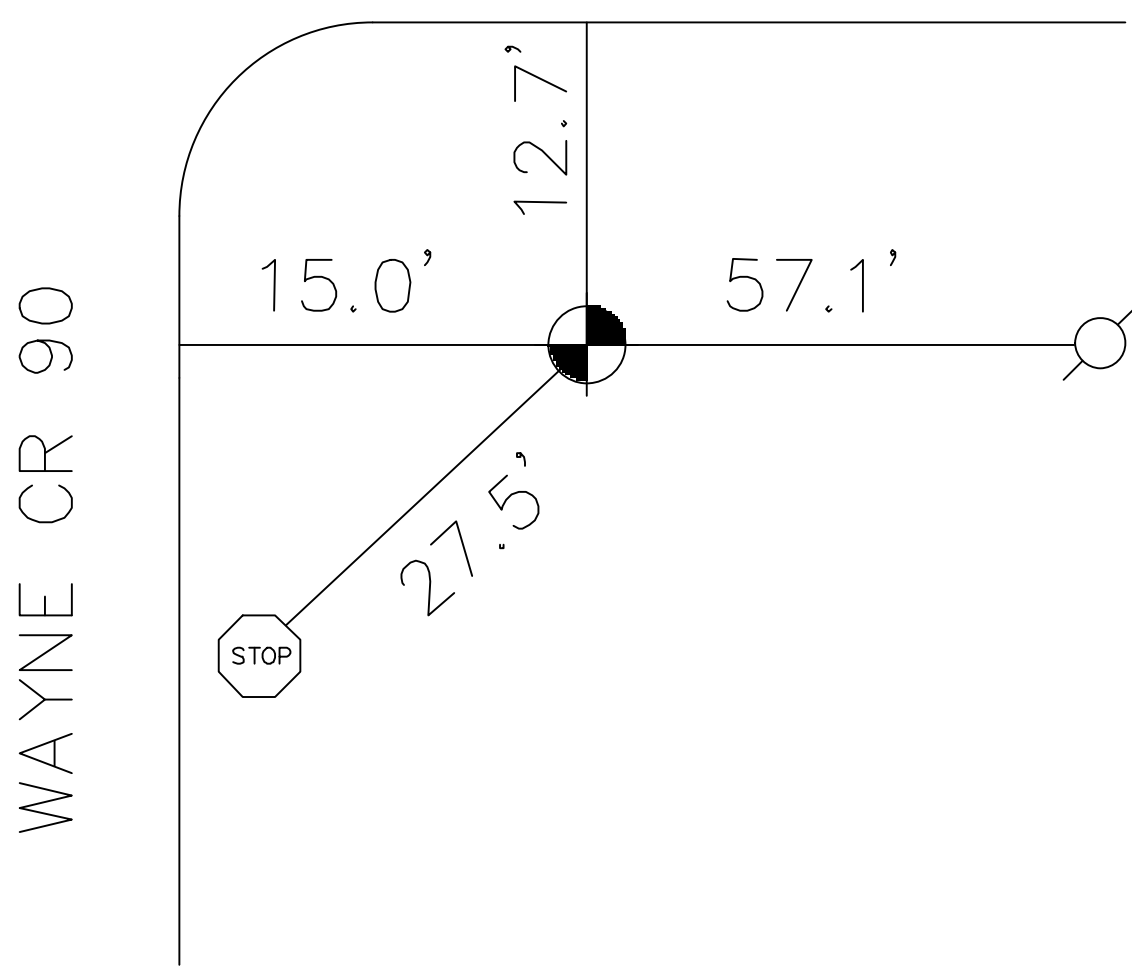
BENCHMARK



STOP SIGN



TELEPHONE POLE



NOT TO SCALE

