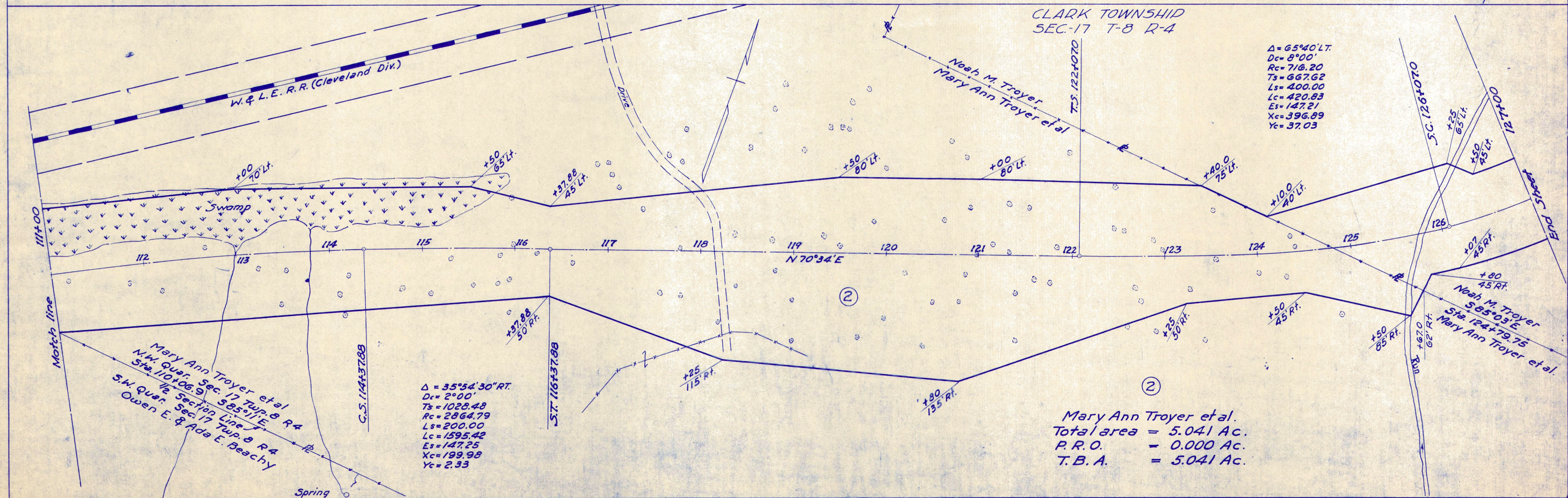
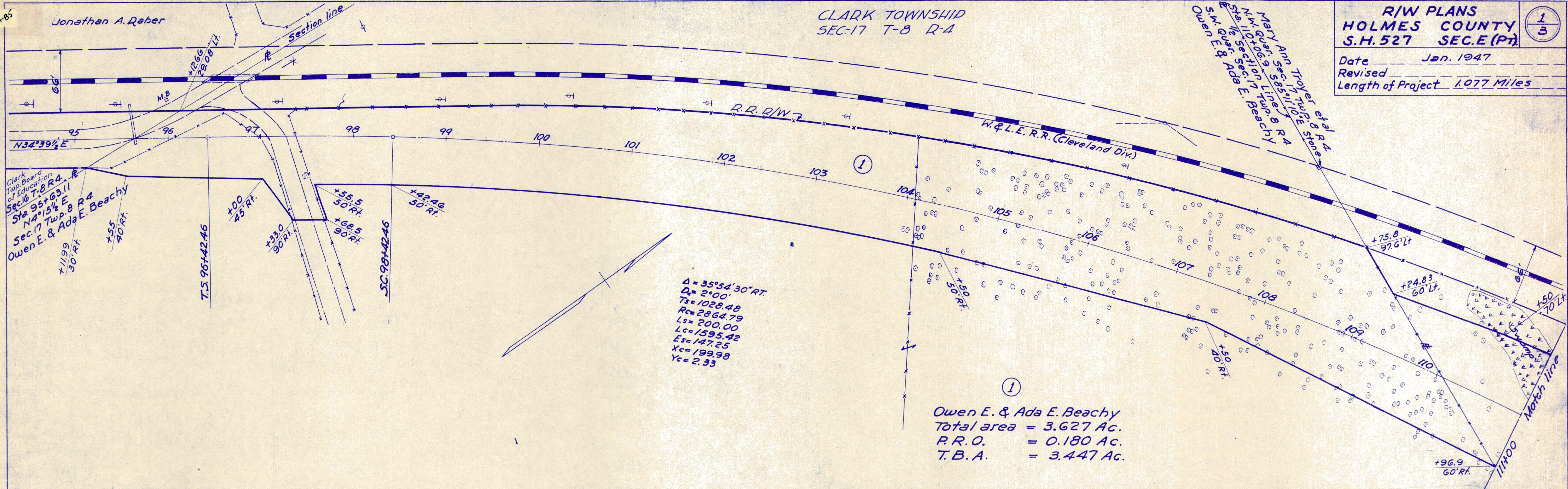


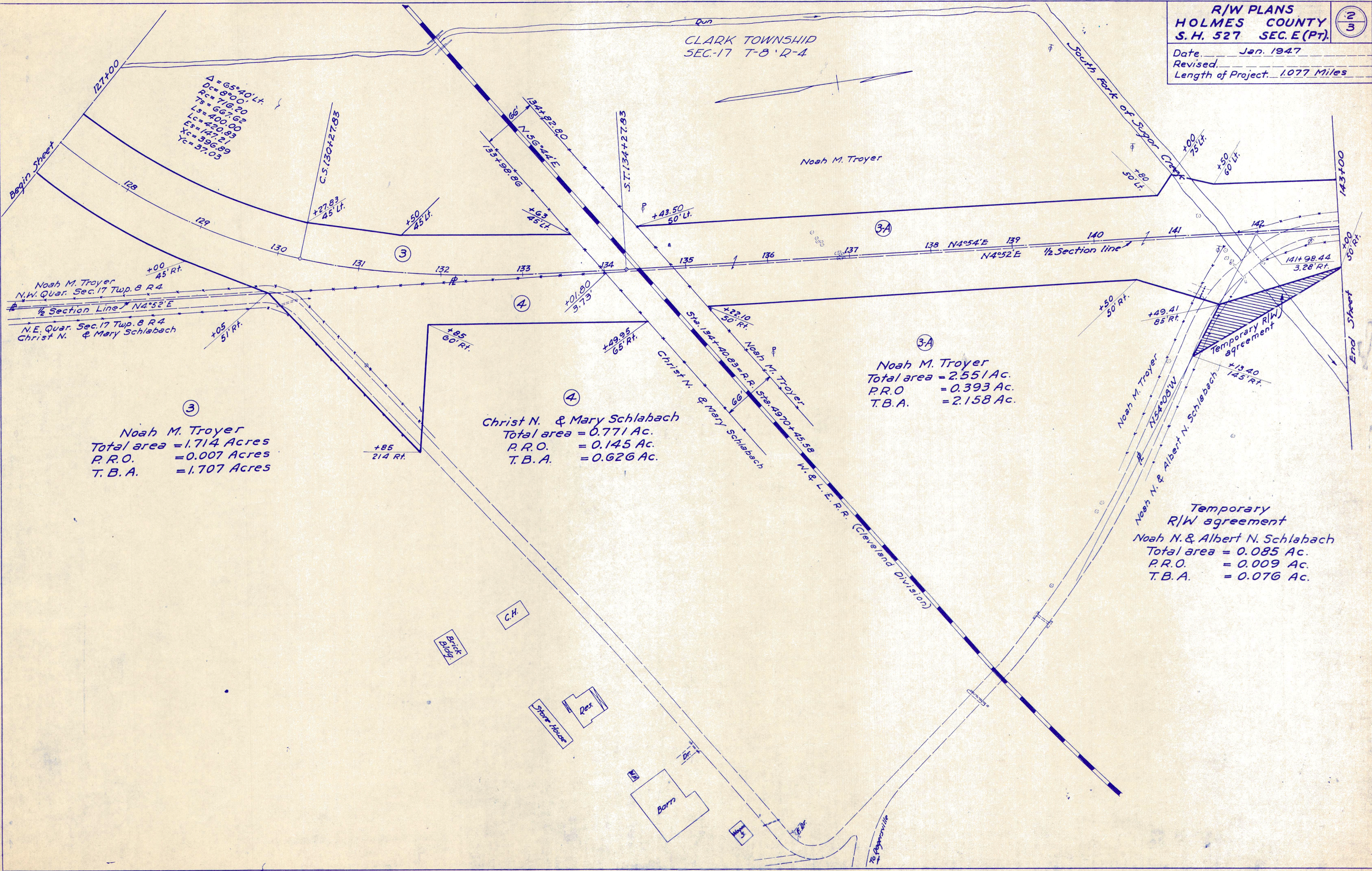
Jonathan A. Reber

CLARK TOWNSHIP
SEC-17 T-8 R-4

R/W PLANS
HOLMES COUNTY
S.H. 527 SEC. E (PT)

Date Jan. 1947
Revised
Length of Project 1.077 Miles



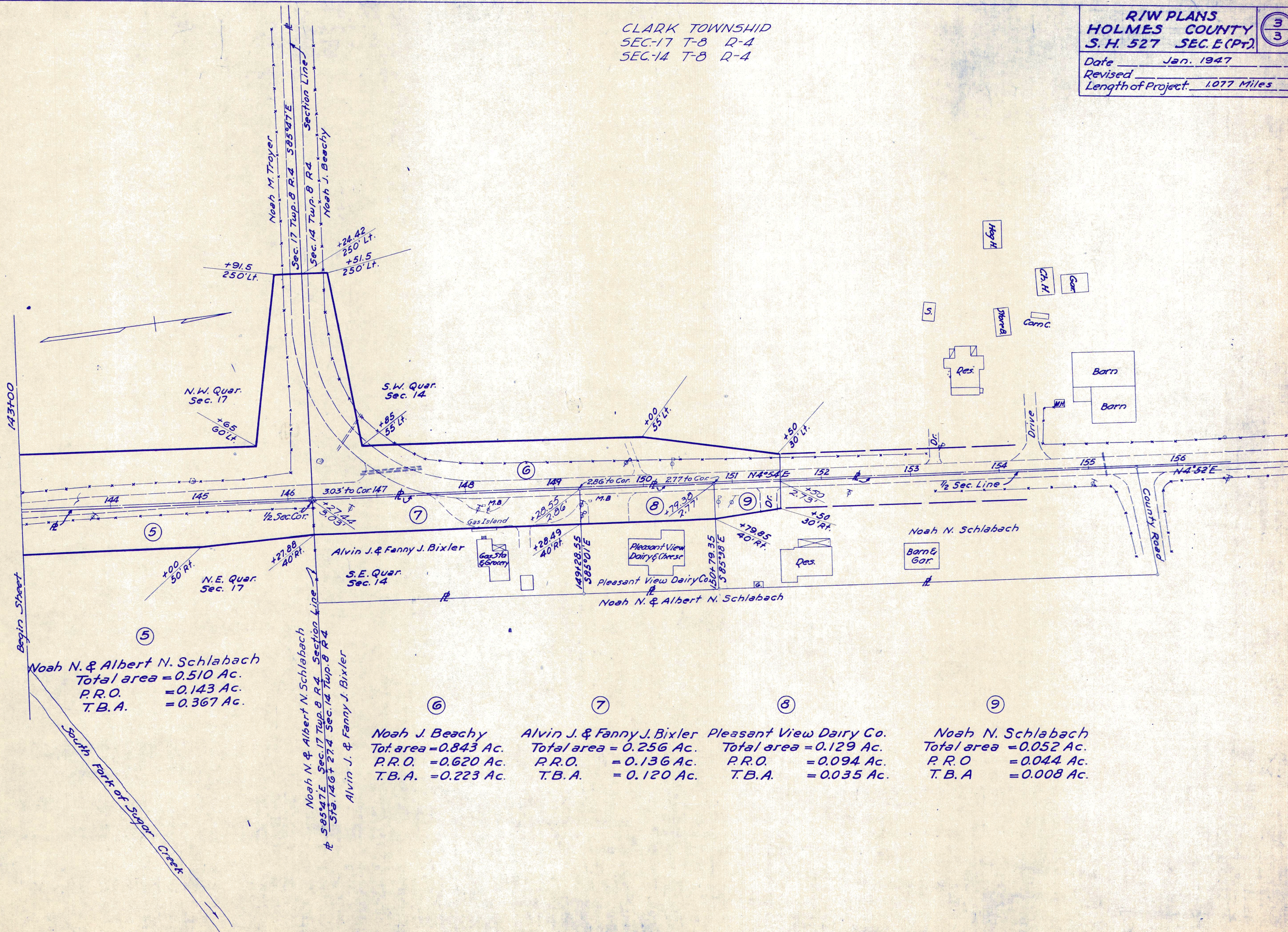


CLARK TOWNSHIP
 SEC-17 T-8 R-4
 SEC-14 T-8 R-4

R/W PLANS
 HOLMES COUNTY
 S. H. 527 SEC. E (PT.)

3
 3

Date Jan. 1947
 Revised _____
 Length of Project 1.077 Miles



Noah N. & Albert N. Schlabach
 Total area = 0.510 Ac.
 P.R.O. = 0.143 Ac.
 T.B.A. = 0.367 Ac.

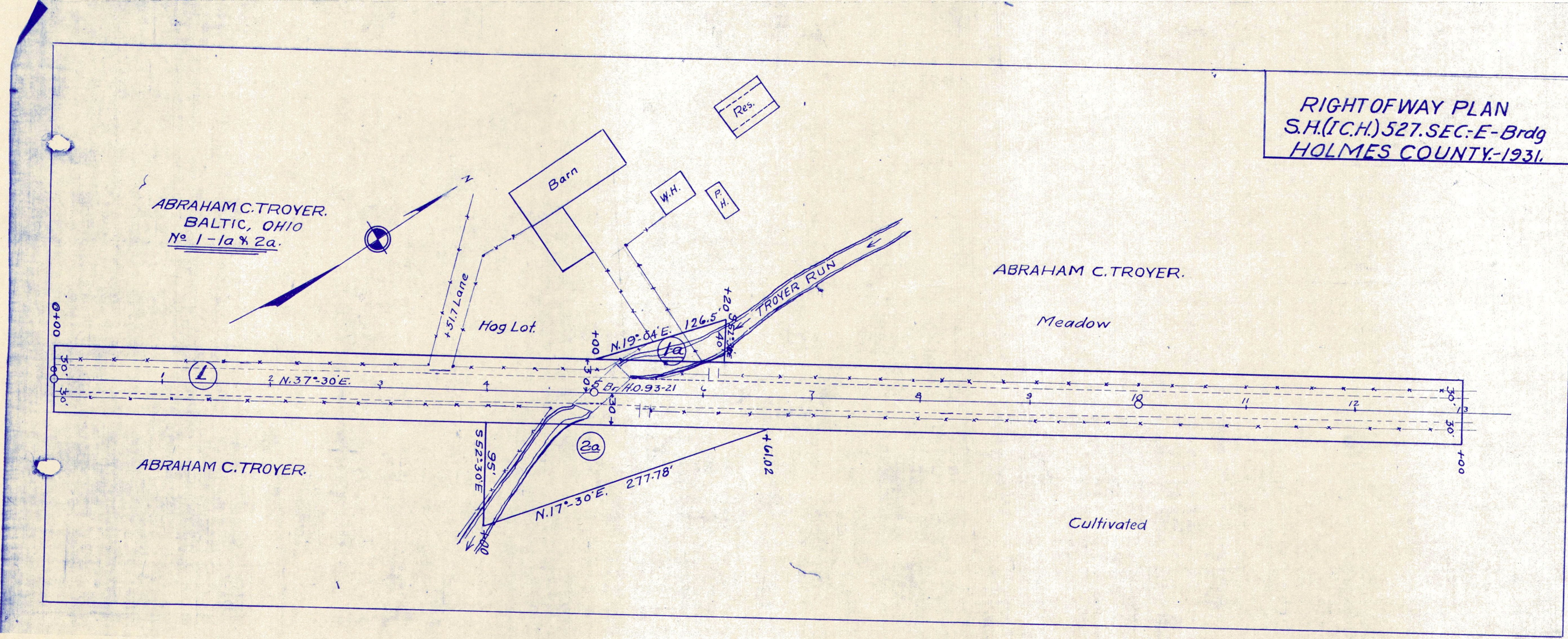
Noah J. Beachy
 Tot. area = 0.843 Ac.
 P.R.O. = 0.620 Ac.
 T.B.A. = 0.223 Ac.

Alvin J. & Fanny J. Bixler
 Total area = 0.256 Ac.
 P.R.O. = 0.136 Ac.
 T.B.A. = 0.120 Ac.

Pleasant View Dairy Co.
 Total area = 0.129 Ac.
 P.R.O. = 0.094 Ac.
 T.B.A. = 0.035 Ac.

Noah N. Schlabach
 Total area = 0.052 Ac.
 P.R.O. = 0.044 Ac.
 T.B.A. = 0.008 Ac.

RIGHT OF WAY PLAN
 S.H.(I.C.H.) 527. SEC. E - Brdg
 HOLMES COUNTY - 1931.



ABRAHAM C. TROYER.
 BALTIC, OHIO
 No. 1-1a & 2a.

ABRAHAM C. TROYER.

ABRAHAM C. TROYER.

Cultivated