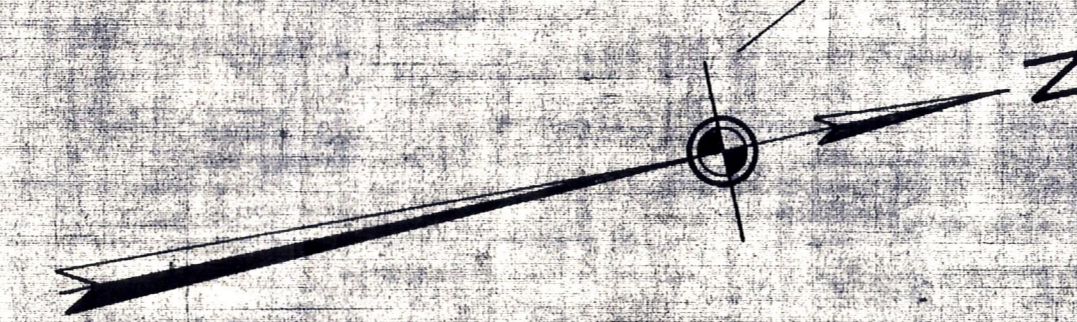
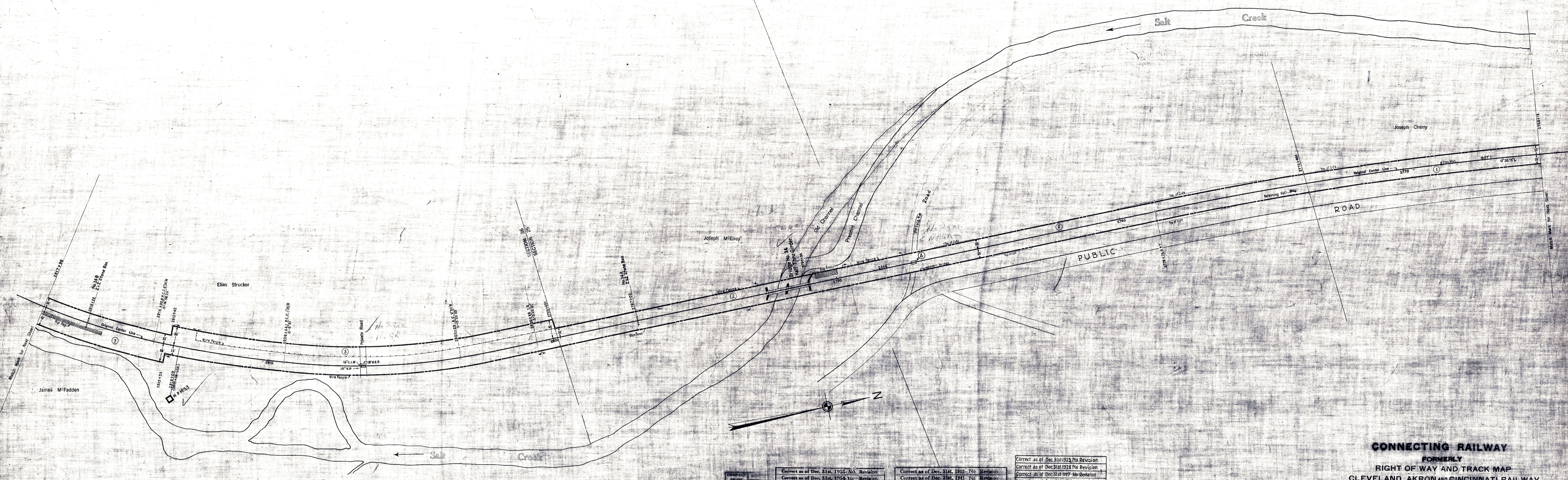


HOLMES COUNTY, OHIO  
PRAIRIE TOWNSHIP



CONTRACT	NO.	DATE	REVISION
1922	1	1922	
1923	1	1923	
1924	1	1924	
1925	1	1925	
1926	1	1926	
1927	1	1927	
1928	1	1928	
1929	1	1929	
1930	1	1930	
1931	1	1931	
1932	1	1932	
1933	1	1933	
1934	1	1934	
1935	1	1935	
1936	1	1936	
1937	1	1937	
1938	1	1938	
1939	1	1939	
1940	1	1940	
1941	1	1941	
1942	1	1942	
1943	1	1943	
1944	1	1944	
1945	1	1945	
1946	1	1946	
1947	1	1947	
1948	1	1948	
1949	1	1949	
1950	1	1950	
1951	1	1951	
1952	1	1952	
1953	1	1953	
1954	1	1954	
1955	1	1955	

Correct as of Dec. 31st, 1955. No Revision
Correct as of Dec. 31st, 1954. No Revision
Correct as of Dec. 31st, 1953. No Revision
Correct as of Dec. 31st, 1952. No Revision
Correct as of Dec. 31st, 1951. No Revision
Correct as of Dec. 31st, 1950. No Revision
Correct as of Dec. 31st, 1949. No Revision
Correct as of Dec. 31st, 1948. No Revision
Correct as of Dec. 31st, 1947. No Revision
Correct as of Dec. 31st, 1946. No Revision
Correct as of Dec. 31st, 1945. No Revision
Correct as of Dec. 31st, 1944. No Revision
Correct as of Dec. 31st, 1943. No Revision

Correct as of Dec. 31st, 1942. No Revision
Correct as of Dec. 31st, 1941. No Revision
Correct as of Dec. 31st, 1940. No Revision
Correct as of Dec. 31st, 1939. No Revision
Correct as of Dec. 31st, 1938. No Revision
Correct as of Dec. 31st, 1937. No Revision
Correct as of Dec. 31st, 1936. No Revision
Correct as of Dec. 31st, 1935. No Revision
Correct as of Dec. 31st, 1934. No Revision
Correct as of Dec. 31st, 1933. No Revision
Correct as of Dec. 31st, 1932. No Revision
Correct as of Dec. 31st, 1931. No Revision
Correct as of Dec. 31st, 1930. No Revision

Correct as of Dec. 31st, 1929. No Revision
Correct as of Dec. 31st, 1928. No Revision
Correct as of Dec. 31st, 1927. No Revision
Correct as of Dec. 31st, 1926. No Revision
Correct as of Dec. 31st, 1925. No Revision
Correct as of Dec. 31st, 1924. No Revision
Correct as of Dec. 31st, 1923. No Revision
Correct as of Dec. 31st, 1922. No Revision
Correct as of Dec. 31st, 1921. No Revision
Correct as of Dec. 31st, 1920. No Revision
Correct as of Dec. 31st, 1919. No Revision
Correct as of Dec. 31st, 1918. No Revision
Correct as of Dec. 31st, 1917. No Revision

Sheet No. 26 of 21. Ohio of Cleveland, Akron and Cincinnati Railway  
From Survey Station 2765+48 to Survey Station 2817+98

**CONNECTING RAILWAY**  
FORMERLY  
**RIGHT OF WAY AND TRACK MAP**  
**CLEVELAND, AKRON AND CINCINNATI RAILWAY**  
OPERATED BY THE  
**PENNSYLVANIA COMPANY**  
AKRON DIVISION  
STATION 2765+48 TO STATION 2817+98  
SCALE: 1 IN. = 100 FT. JUNE 30, 1956  
OFFICE OF VALUATION ENGINEER  
PITTSBURGH, PA.

