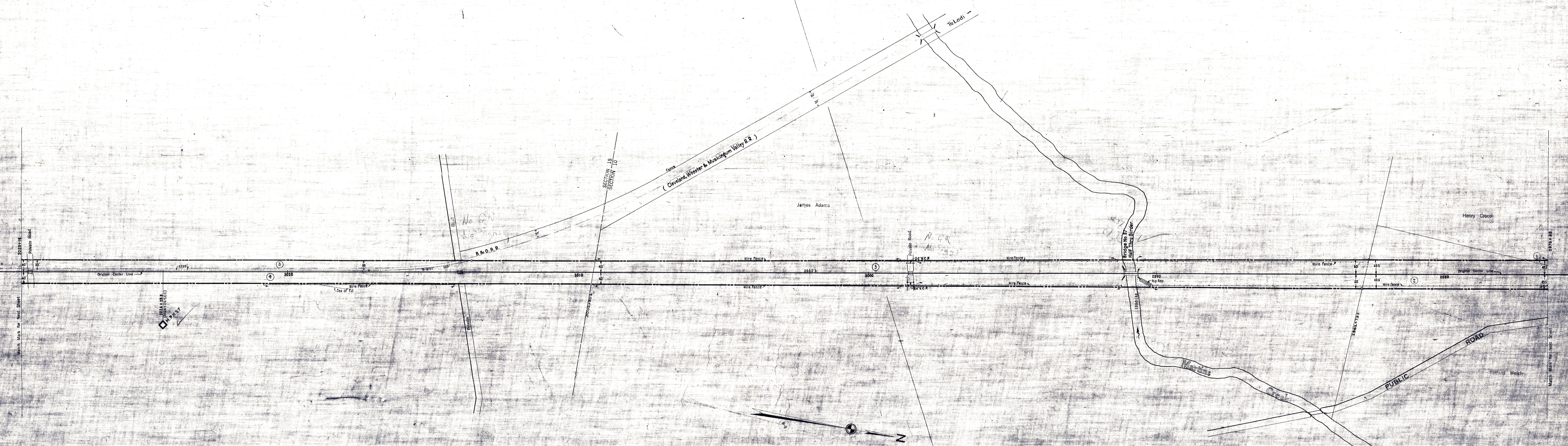


HOLMES COUNTY, OHIO
PRAIRIE TOWNSHIP



CORRECT AS OF	REVISED	REVISION
DATE	YES	NO
1927		
1928		
1929		
1930		
1931		
1932		
1933		
1934		
1935		
1936		
1937		
1938		
1939		
1940		
1941		
1942		
1943		
1944		
1945		
1946		
1947		
1948		
1949		
1950		
1951		
1952		
1953		
1954		
1955		

CONNECTING RAILWAY
FORMERLY
RIGHT OF WAY AND TRACK MAP
CLEVELAND, AKRON AND CINCINNATI RAILWAY
OPERATED BY THE
PENNSYLVANIA COMPANY
AKRON DIVISION
STATION 2976+38 TO STATION 3029+18
SCALE: 1 IN. = 100 FT. JUNE 30, 1918
OFFICE OF VALUATION ENGINEER
PITTSBURGH, PA.
CLEVELAND, AKRON & CINCINNATI RAILWAY CO. HEREBY
WITH OTHER CORPORATIONS TO FORM THE PENNSYLVANIA
ROAD & DETROIT RAILROAD COMPANY JULY 1, 1924

V10
OHIO
30

V10
OHIO
30

Sheet No. 30 v. 21. Ohio of Cleveland, Akron & Cincinnati Railway
from Survey Station 2976+38 to Survey Station 3029+18
Chief Draftsman

VS 7307 LC 1137 MP 57 1 57 1