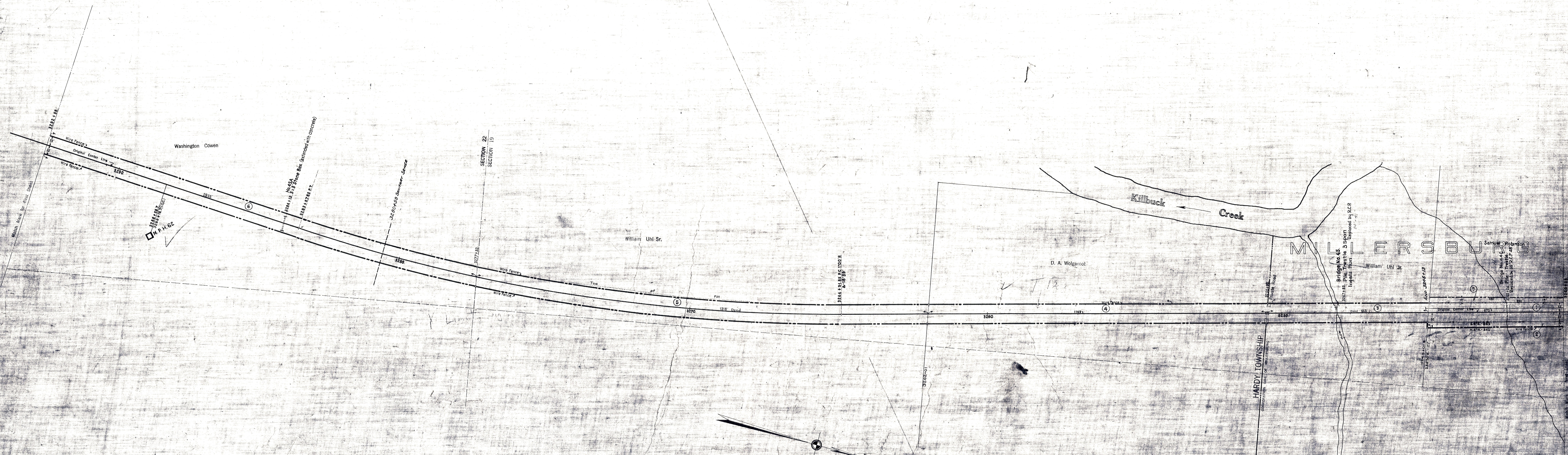


HOLMES COUNTY, OHIO.
HARDY TOWNSHIP



SCHEDULE OF SIDINGS AND CROSSOVERS

Side Trk Number	Location	Class	Length	Remarks
			PARC. BRW. Tot.	
5	Millersburg, Corpn	P		See May 34.
5	Harvey, Twp.	P		Added 12-8-17

V10
OHIO
35

CORRECT AS OF DEC 31,	REVISED	REVISION
YES	NO	
1897		Correct as of Dec. 31st, 1955: No Revision
1898		Correct as of Dec. 31st, 1954: No Revision
1899		Correct as of Dec. 31st, 1953: No Revision
1900		Correct as of Dec. 31st, 1952: No Revision
1901		Correct as of Dec. 31st, 1951: No Revision
1902		Correct as of Dec. 31st, 1950: No Revision
1903		Correct as of Dec. 31st, 1949: No Revision
1904		Correct as of Dec. 31st, 1948: No Revision
1905		Correct as of Dec. 31st, 1947: No Revision
1906		Correct as of Dec. 31st, 1946: No Revision
1907		Correct as of Dec. 31st, 1945: No Revision
1908		Correct as of Dec. 31st, 1944: No Revision
1909		Correct as of Dec. 31st, 1943: No Revision
1910		Correct as of Dec. 31st, 1942: No Revision
1911		Correct as of Dec. 31st, 1941: No Revision
1912		Correct as of Dec. 31st, 1940: No Revision
1913		Correct as of Dec. 31st, 1939: No Revision
1914		Correct as of Dec. 31st, 1938: No Revision
1915		Correct as of Dec. 31st, 1937: No Revision
1916		Correct as of Dec. 31st, 1936: No Revision
1917		Correct as of Dec. 31st, 1935: No Revision
1918		Correct as of Dec. 31st, 1934: No Revision
1919		Correct as of Dec. 31st, 1933: No Revision
1920		Correct as of Dec. 31st, 1932: No Revision
1921		Correct as of Dec. 31st, 1931: No Revision
1922		Correct as of Dec. 31st, 1930: No Revision
1923		Correct as of Dec. 31st, 1929: No Revision
1924		Correct as of Dec. 31st, 1928: No Revision
1925		Correct as of Dec. 31st, 1927: No Revision
1926		Correct as of Dec. 31st, 1926: No Revision
1927		Correct as of Dec. 31st, 1925: No Revision
1928		Correct as of Dec. 31st, 1924: No Revision
1929		Correct as of Dec. 31st, 1923: No Revision
1930		Correct as of Dec. 31st, 1922: No Revision
1931		Correct as of Dec. 31st, 1921: No Revision
1932		Correct as of Dec. 31st, 1920: No Revision
1933		Correct as of Dec. 31st, 1919: No Revision
1934		Correct as of Dec. 31st, 1918: No Revision
1935		Correct as of Dec. 31st, 1917: No Revision

Sheet No. 3 of V. 21 Ohio of Cleveland, Akron and Cincinnati Railway from Survey Station 3240+38 to Survey Station 3292+58
Chief Draftsman

CONNECTING RAILWAY
FORMERLY
RIGHT OF WAY AND TRACK MAP
CLEVELAND, AKRON AND CINCINNATI RAILWAY
OPERATED BY THE
PENNSYLVANIA COMPANY
AKRON DIVISION
STATION 3240+38 TO STATION 3292+58
SCALE: 1" = 100 FT. JUNE 30, 1918
OFFICE OF VALUATION ENGINEER
PITTSBURGH, PA.
CLEVELAND, AKRON & CINCINNATI RAILWAY CO. MERGED
WITH OTHER COMPANIES TO FORM THE PENNSYLVANIA
RAILWAY COMPANY JAN. 1, 1907.

V10
OHIO
35
FORMERLY
V21
OHIO
35