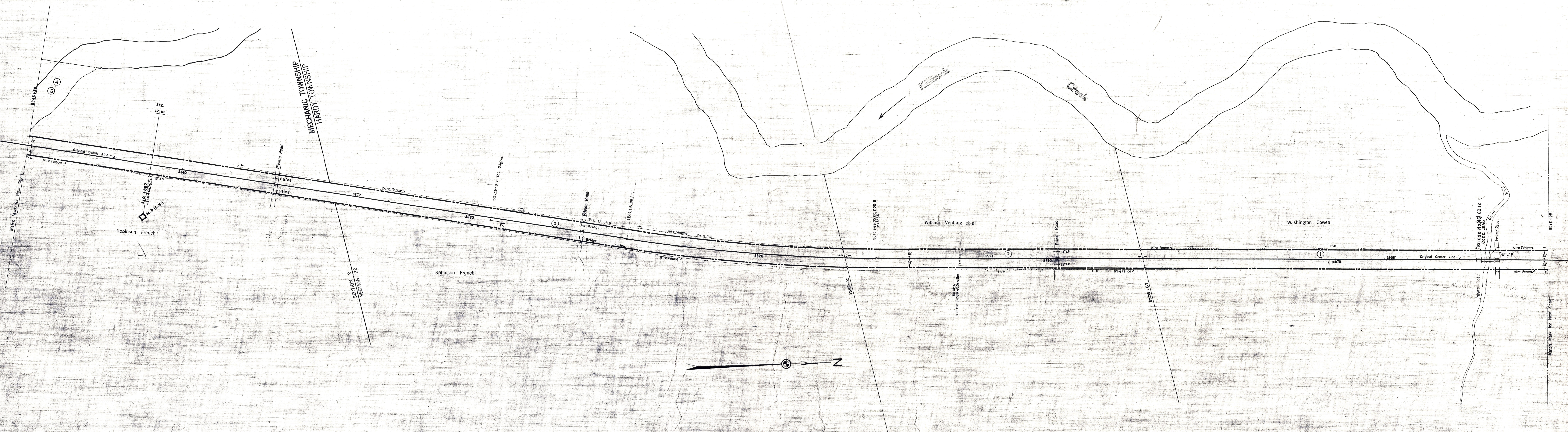


HOLMES COUNTY, OHIO.



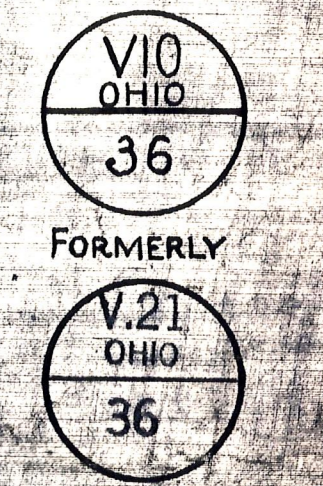
CORRECT AS OF DEC. 31, 1937	REVISED YES	NO	Correct as of Dec. 31, 1955: No Revision	Correct as of Dec. 31, 1942: No Revision	Correct as of Dec. 31, 1928: Map Revised
1937			Correct as of Dec. 31, 1954: No Revision	Correct as of Dec. 31, 1941: No Revision	Correct as of Dec. 31, 1927: Map Revised
1938			Correct as of Dec. 31, 1953: No Revision	Correct as of Dec. 31, 1940: No Revision	Correct as of June 30, 1927: No Revision
1939			Correct as of Dec. 31, 1952: No Revision	Correct as of Dec. 31, 1939: No Revision	Correct as of June 30, 1927: No Revision
1940			Correct as of Dec. 31, 1951: No Revision	Correct as of Dec. 31, 1938: No Revision	Correct as of June 30, 1925: No Revision
1941			Correct as of Dec. 31, 1950: No Revision	Correct as of Dec. 31, 1937: No Revision	Correct as of June 30, 1924: No Revision
1942			Correct as of Dec. 31, 1949: No Revision	Correct as of Dec. 31, 1936: No Revision	Correct as of June 30, 1923: No Revision
1943			Correct as of Dec. 31, 1948: No Revision	Correct as of Dec. 31, 1935: Map Revised	Correct as of June 30, 1922: No Revision
1944			Correct as of Dec. 31, 1947: No Revision	Correct as of Dec. 31, 1934: No Revision	Correct as of June 30, 1921: No Revision
1945			Correct as of Dec. 31, 1946: Map Revised	Correct as of Dec. 31, 1933: No Revision	Correct as of June 30, 1920: No Revision
1946			Correct as of Dec. 31, 1945: No Revision	Correct as of Dec. 31, 1932: No Revision	Correct as of June 30, 1919: No Revision
1947			Correct as of Dec. 31, 1944: No Revision	Correct as of Dec. 31, 1931: No Revision	Correct as of June 30, 1918: No Revision
1948			Correct as of Dec. 31, 1943: No Revision	Correct as of Dec. 31, 1930: No Revision	Correct as of June 30, 1917: No Revision

Sheet No. 36 v. 21 Ohio of Cleveland, Akron & Cincinnati Railway from Survey Station 3292+58 to Survey Station 3345+38

CONNECTING RAILWAY
 FORMERLY
 RIGHT OF WAY AND TRACK MAP
 CLEVELAND, AKRON AND CINCINNATI RAILWAY
 OPERATED BY THE

PENNSYLVANIA COMPANY
 AKRON DIVISION
 STATION 3292+58 TO STATION 3345+38

SCALE: 1 IN. = 100 FT. JUNE 30, 1916
 OFFICE OF VALUATION ENGINEER
 PITTSBURGH, PA.



CLEVELAND, AKRON & CINCINNATI RAILWAY CO. MERGED WITH OTHER CORPORATIONS TO FORM THE PENNSYLVANIA COMPANY DETROIT RAILROAD COMPANY JULY 1, 1924



VS 7307 KC 8137 MP 231-231