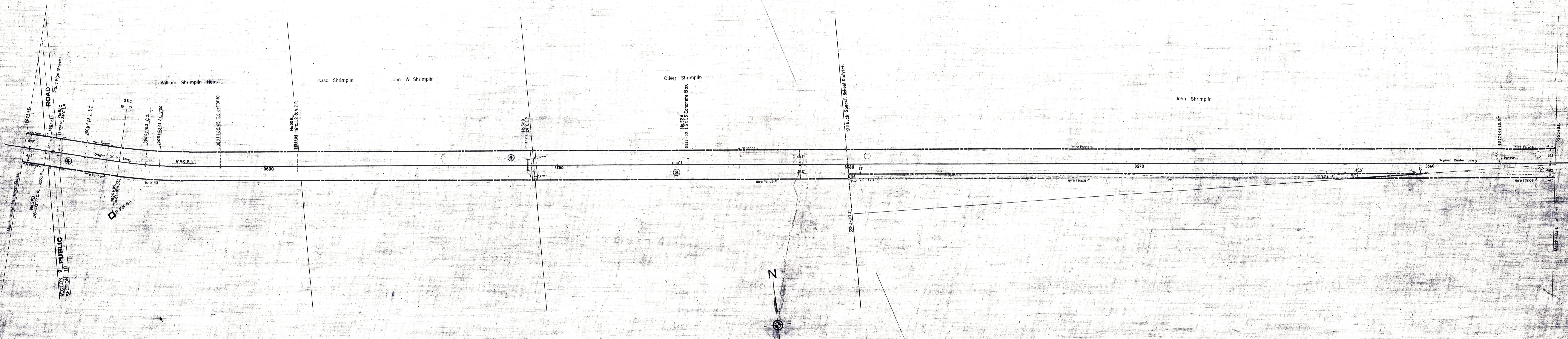


HOLMES COUNTY, OHIO
KILLBUCK TOWNSHIP



V10
OHIO
41

Correct as of Dec. 31st, 1955	No Revision
Correct as of Dec. 31st, 1954	No Revision
Correct as of Dec. 31st, 1953	No Revision
Correct as of Dec. 31st, 1952	No Revision
Correct as of Dec. 31st, 1951	No Revision
Correct as of Dec. 31st, 1950	No Revision
Correct as of Dec. 31st, 1949	No Revision
Correct as of Dec. 31st, 1948	No Revision
Correct as of Dec. 31st, 1947	No Revision
Correct as of Dec. 31st, 1946	No Revision
Correct as of Dec. 31st, 1945	No Revision
Correct as of Dec. 31st, 1944	No Revision
Correct as of Dec. 31st, 1943	No Revision

1967	✓
1968	✓
1969	✓
1970	✓
1971	✓
1972	✓
1973	✓
1974	✓
1975	✓
1976	✓
1977	✓
1978	✓
1979	✓
1980	✓
1981	✓
1982	✓
1983	✓
1984	✓
1985	✓
1986	✓
1987	✓
1988	✓
1989	✓
1990	✓

Correct as of Dec. 31st, 1942	No Revision
Correct as of Dec. 31st, 1941	No Revision
Correct as of Dec. 31st, 1940	No Revision
Correct as of Dec. 31st, 1939	No Revision
Correct as of Dec. 31st, 1938	No Revision
Correct as of Dec. 31st, 1937	No Revision
Correct as of Dec. 31st, 1936	Map Revised
Correct as of Dec. 31st, 1935	No Revision
Correct as of Dec. 31st, 1934	No Revision
Correct as of Dec. 31st, 1933	No Revision
Correct as of Dec. 31st, 1932	No Revision
Correct as of Dec. 31st, 1931	No Revision
Correct as of Dec. 31st, 1930	No Revision

Correct as of Dec. 31st 1929	No Revision
Correct as of Dec. 31st 1928	No Revision
Correct as of Dec. 31, 1927	No Revision
Correct as of June 30, 1926	No Revision
Correct as of June 30, 1925	No Revision
Correct as of Dec. 31st, 1924	No Revision
Correct as of Dec. 31st, 1923	No Revision
Correct as of Dec. 31st, 1922	No Revision
Correct as of Dec. 31st, 1921	No Revision
Correct as of Dec. 31st, 1920	No Revision
Correct as of Dec. 31st, 1919	No Revision
Correct as of Dec. 31st, 1918	Map Revised
Correct as of Dec. 31st, 1917	No Revision

Sheet No. 41 V. 21 Ohio of Cleveland, Akron & Cincinnati Railway
from Survey Station 3555+58 to Survey Station 3608+38

CONNECTING RAILWAY
FORMERLY
RIGHT OF WAY AND TRACK MAP
CLEVELAND, AKRON AND CINCINNATI RAILWAY
OPERATED BY THE
PENNSYLVANIA COMPANY
AKRON DIVISION
STATION 3555+58 TO STATION 3608+38
SCALE: 1 IN. = 100 FT. JUNE 30, 1918
OFFICE OF VALUATION ENGINEER
PITTSBURGH, PA.
CLEVELAND, AKRON & CINCINNATI RAILWAY CO. MERGED
WITH OTHER CO. OPERATING TO FORM THE PENNSYLVANIA
ONE A DETACHED RAILROAD COMPANY JULY 1, 1924

V10
OHIO
41
FORMERLY
V.21
OHIO
41