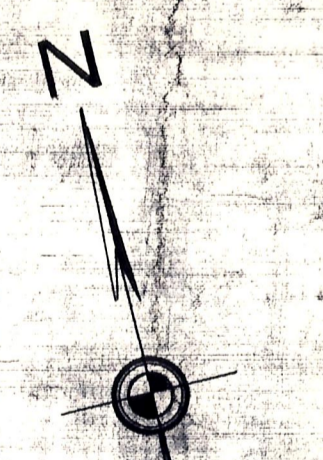
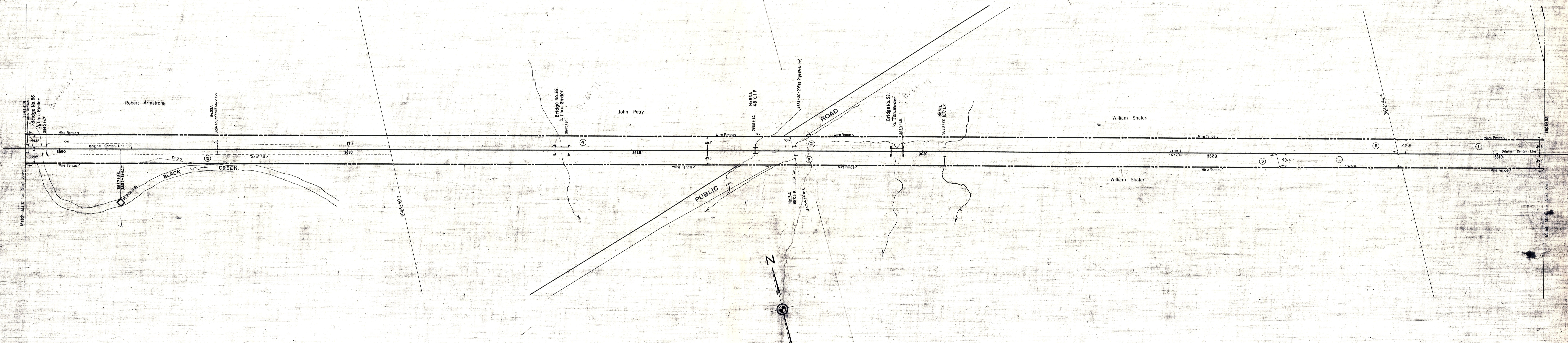


HOLMES COUNTY, OHIO
KILLBUCK TOWNSHIP



| CORRECT AS OF DEC 31 | YES | NO |
|----------------------|-----|----|
| 1867 | | |
| 1868 | | |
| 1869 | | |
| 1870 | | |
| 1871 | | |
| 1872 | | |
| 1873 | | |
| 1874 | | |
| 1875 | | |
| 1876 | | |
| 1877 | | |
| 1878 | | |
| 1879 | | |
| 1880 | | |
| 1881 | | |
| 1882 | | |
| 1883 | | |
| 1884 | | |
| 1885 | | |
| 1886 | | |
| 1887 | | |
| 1888 | | |
| 1889 | | |
| 1890 | | |
| 1891 | | |
| 1892 | | |
| 1893 | | |
| 1894 | | |
| 1895 | | |
| 1896 | | |
| 1897 | | |
| 1898 | | |
| 1899 | | |
| 1900 | | |

| |
|--|
| Correct as of Dec. 31st, 1955- No Revision |
| Correct as of Dec. 31st, 1954- No Revision |
| Correct as of Dec. 31st, 1953- No Revision |
| Correct as of Dec. 31st, 1952- No Revision |
| Correct as of Dec. 31st, 1951- No Revision |
| Correct as of Dec. 31st, 1950- No Revision |
| Correct as of Dec. 31st, 1949- No Revision |
| Correct as of Dec. 31st, 1948- No Revision |
| Correct as of Dec. 31st, 1947- No Revision |
| Correct as of Dec. 31st, 1946- No Revision |
| Correct as of Dec. 31st, 1945- No Revision |
| Correct as of Dec. 31st, 1944- No Revision |
| Correct as of Dec. 31st, 1943- No Revision |
| Correct as of Dec. 31st, 1942- No Revision |
| Correct as of Dec. 31st, 1941- No Revision |
| Correct as of Dec. 31st, 1940- No Revision |
| Correct as of Dec. 31st, 1939- No Revision |
| Correct as of Dec. 31st, 1938- No Revision |
| Correct as of Dec. 31st, 1937- No Revision |
| Correct as of Dec. 31st, 1936- No Revision |
| Correct as of Dec. 31st, 1935- No Revision |
| Correct as of Dec. 31st, 1934- No Revision |
| Correct as of Dec. 31st, 1933- No Revision |
| Correct as of Dec. 31st, 1932- No Revision |
| Correct as of Dec. 31st, 1931- No Revision |
| Correct as of Dec. 31st, 1930- No Revision |

| |
|--|
| Correct as of Dec. 31st, 1942- No Revision |
| Correct as of Dec. 31st, 1941- No Revision |
| Correct as of Dec. 31st, 1940- No Revision |
| Correct as of Dec. 31st, 1939- No Revision |
| Correct as of Dec. 31st, 1938- No Revision |
| Correct as of Dec. 31st, 1937- No Revision |
| Correct as of Dec. 31st, 1936- No Revision |
| Correct as of Dec. 31st, 1935- No Revision |
| Correct as of Dec. 31st, 1934- No Revision |
| Correct as of Dec. 31st, 1933- No Revision |
| Correct as of Dec. 31st, 1932- No Revision |
| Correct as of Dec. 31st, 1931- No Revision |
| Correct as of Dec. 31st, 1930- No Revision |

| |
|---|
| Correct as of Dec. 31st 1929- No Revision |
| Correct as of Dec. 31st 1928- No Revision |
| Correct as of Dec. 31 1927- No Revision |
| Correct as of June 30, 1926- No Revision |
| Correct as of June 30, 1925- No Revision |
| Correct as of June 30, 1924- No Revision |
| Correct as of June 30, 1923- No Revision |
| Correct as of June 30, 1922- No Revision |
| Correct as of June 30, 1921- Map Revised |
| Correct as of June 30, 1920- No Revision |
| Correct as of June 30, 1919- No Revision |
| Correct as of June 30, 1918- No Revision |
| Correct as of June 30, 1917- No Revision |

Sheet No. 42 V. 21 Ohio of Cleveland, Akron and Cincinnati Railway
from Survey Station 3608+38 to Survey Station 3661+18

CONNECTING RAILWAY
FORMERLY
RIGHT OF WAY AND TRACK MAP
CLEVELAND, AKRON AND CINCINNATI RAILWAY
OPERATED BY THE
PENNSYLVANIA COMPANY
AKRON DIVISION
STATION 3608+38 TO STATION 3661+18
SCALE: 1 IN. = 100 FT. JUNE 30, 1918
OFFICE OF VALUATION ENGINEER
PITTSBURGH, PA.

V10
OHIO
42
FORMERLY
V.21
OHIO
42

CLEVELAND, AKRON & CINCINNATI RAILWAY CO. MERGED
WITH OTHER CORPORATIONS TO FORM THE PENNSYLVANIA
OHIO & DETROIT RAILROAD COMPANY JULY 1, 1968