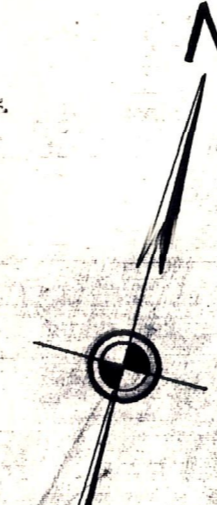
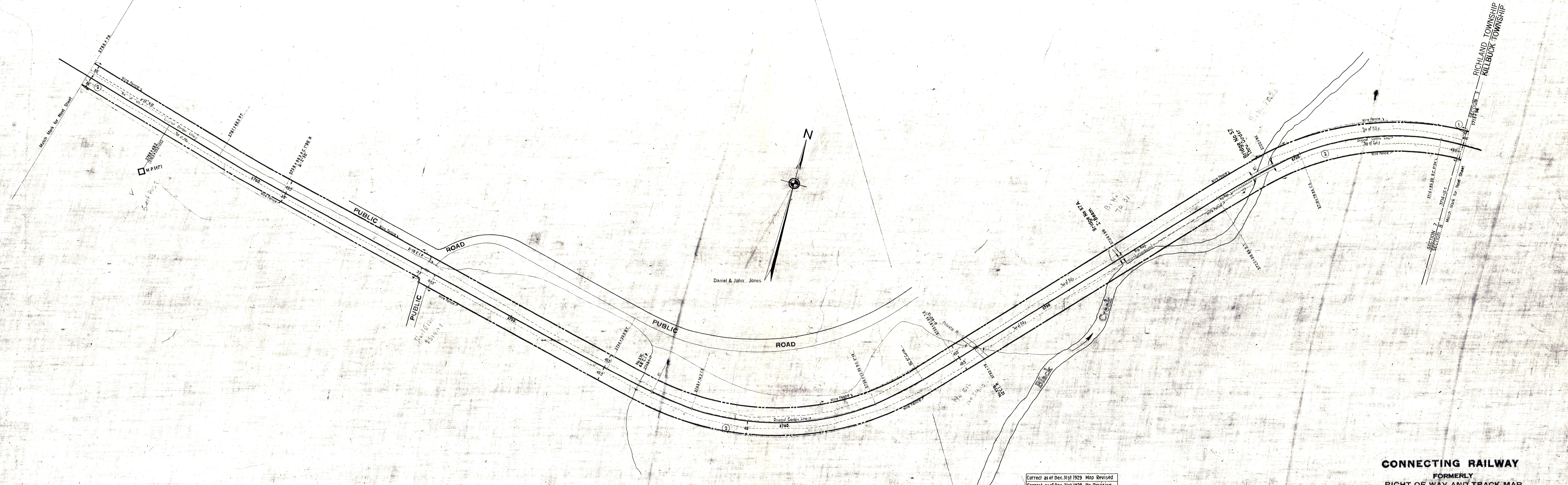


HOLMES COUNTY, OHIO



SCHEDULE OF SIDINGS AND CROSSOVERS

Side Trk Number	Location	Class	R.R. Co.	Private	Total	Remarks
5	Richland Twp.	B				Removed 6-30-17

VIO  
OHIO  
44

1927	✓	Correct as of Dec. 31st, 1927	Map Revised
1928	✓	Correct as of Dec. 31st, 1928	No Revision
1929	✓	Correct as of Dec. 31st, 1929	Map Revised
1930	✓	Correct as of Dec. 31st, 1930	No Revision
1931	✓	Correct as of Dec. 31st, 1931	No Revision
1932	✓	Correct as of Dec. 31st, 1932	No Revision
1933	✓	Correct as of Dec. 31st, 1933	No Revision
1934	✓	Correct as of Dec. 31st, 1934	No Revision
1935	✓	Correct as of Dec. 31st, 1935	No Revision
1936	✓	Correct as of Dec. 31st, 1936	No Revision
1937	✓	Correct as of Dec. 31st, 1937	No Revision
1938	✓	Correct as of Dec. 31st, 1938	No Revision
1939	✓	Correct as of Dec. 31st, 1939	No Revision
1940	✓	Correct as of Dec. 31st, 1940	No Revision
1941	✓	Correct as of Dec. 31st, 1941	No Revision
1942	✓	Correct as of Dec. 31st, 1942	No Revision
1943	✓	Correct as of Dec. 31st, 1943	No Revision
1944	✓	Correct as of Dec. 31st, 1944	No Revision
1945	✓	Correct as of Dec. 31st, 1945	No Revision
1946	✓	Correct as of Dec. 31st, 1946	No Revision
1947	✓	Correct as of Dec. 31st, 1947	No Revision
1948	✓	Correct as of Dec. 31st, 1948	No Revision
1949	✓	Correct as of Dec. 31st, 1949	No Revision
1950	✓	Correct as of Dec. 31st, 1950	No Revision
1951	✓	Correct as of Dec. 31st, 1951	No Revision
1952	✓	Correct as of Dec. 31st, 1952	No Revision
1953	✓	Correct as of Dec. 31st, 1953	No Revision
1954	✓	Correct as of Dec. 31st, 1954	No Revision
1955	✓	Correct as of Dec. 31st, 1955	No Revision
1956	✓	Correct as of Dec. 31st, 1956	No Revision
1957	✓	Correct as of Dec. 31st, 1957	No Revision
1958	✓	Correct as of Dec. 31st, 1958	No Revision
1959	✓	Correct as of Dec. 31st, 1959	No Revision
1960	✓	Correct as of Dec. 31st, 1960	No Revision
1961	✓	Correct as of Dec. 31st, 1961	No Revision
1962	✓	Correct as of Dec. 31st, 1962	No Revision
1963	✓	Correct as of Dec. 31st, 1963	No Revision
1964	✓	Correct as of Dec. 31st, 1964	No Revision
1965	✓	Correct as of Dec. 31st, 1965	No Revision
1966	✓	Correct as of Dec. 31st, 1966	No Revision
1967	✓	Correct as of Dec. 31st, 1967	No Revision
1968	✓	Correct as of Dec. 31st, 1968	No Revision
1969	✓	Correct as of Dec. 31st, 1969	No Revision
1970	✓	Correct as of Dec. 31st, 1970	No Revision
1971	✓	Correct as of Dec. 31st, 1971	No Revision
1972	✓	Correct as of Dec. 31st, 1972	No Revision
1973	✓	Correct as of Dec. 31st, 1973	No Revision
1974	✓	Correct as of Dec. 31st, 1974	No Revision
1975	✓	Correct as of Dec. 31st, 1975	No Revision
1976	✓	Correct as of Dec. 31st, 1976	No Revision
1977	✓	Correct as of Dec. 31st, 1977	No Revision
1978	✓	Correct as of Dec. 31st, 1978	No Revision
1979	✓	Correct as of Dec. 31st, 1979	No Revision
1980	✓	Correct as of Dec. 31st, 1980	No Revision
1981	✓	Correct as of Dec. 31st, 1981	No Revision
1982	✓	Correct as of Dec. 31st, 1982	No Revision
1983	✓	Correct as of Dec. 31st, 1983	No Revision
1984	✓	Correct as of Dec. 31st, 1984	No Revision
1985	✓	Correct as of Dec. 31st, 1985	No Revision
1986	✓	Correct as of Dec. 31st, 1986	No Revision
1987	✓	Correct as of Dec. 31st, 1987	No Revision
1988	✓	Correct as of Dec. 31st, 1988	No Revision
1989	✓	Correct as of Dec. 31st, 1989	No Revision
1990	✓	Correct as of Dec. 31st, 1990	No Revision
1991	✓	Correct as of Dec. 31st, 1991	No Revision
1992	✓	Correct as of Dec. 31st, 1992	No Revision
1993	✓	Correct as of Dec. 31st, 1993	No Revision
1994	✓	Correct as of Dec. 31st, 1994	No Revision
1995	✓	Correct as of Dec. 31st, 1995	No Revision
1996	✓	Correct as of Dec. 31st, 1996	No Revision
1997	✓	Correct as of Dec. 31st, 1997	No Revision
1998	✓	Correct as of Dec. 31st, 1998	No Revision
1999	✓	Correct as of Dec. 31st, 1999	No Revision
2000	✓	Correct as of Dec. 31st, 2000	No Revision

Sheet No. 44 V. 21 Ohio of Cleveland, Akron and Cincinnati Railway  
from Survey Station 3713+00 to Survey Station 3766+78

**CONNECTING RAILWAY**  
FORMERLY  
RIGHT OF WAY AND TRACK MAP  
CLEVELAND, AKRON AND CINCINNATI RAILWAY  
OPERATED BY THE  
**PENNSYLVANIA COMPANY**  
AKRON DIVISION  
STATION 3713+00 TO STATION 3766+78  
SCALE: 1 IN = 100 FT. JUNE 30, 1916  
OFFICE OF VALUATION ENGINEER  
PITTSBURGH, PA.

VIO  
OHIO  
44  
FORMERLY  
V. 21  
OHIO  
44