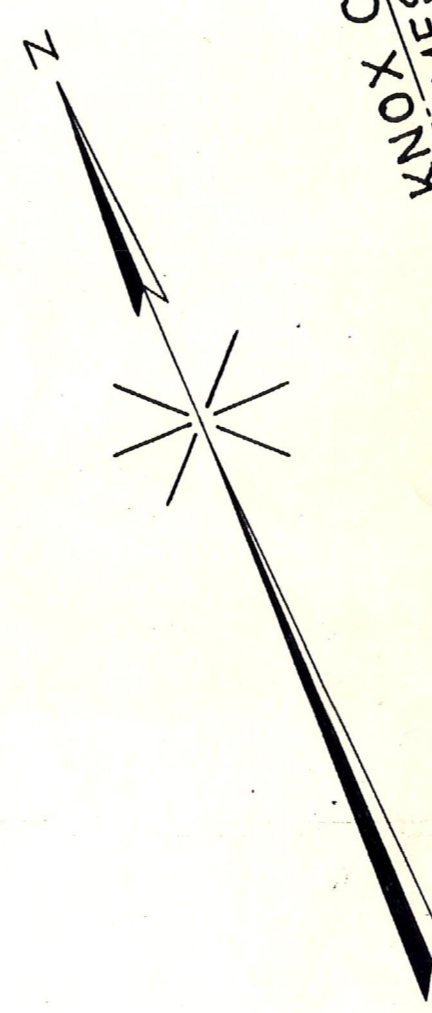
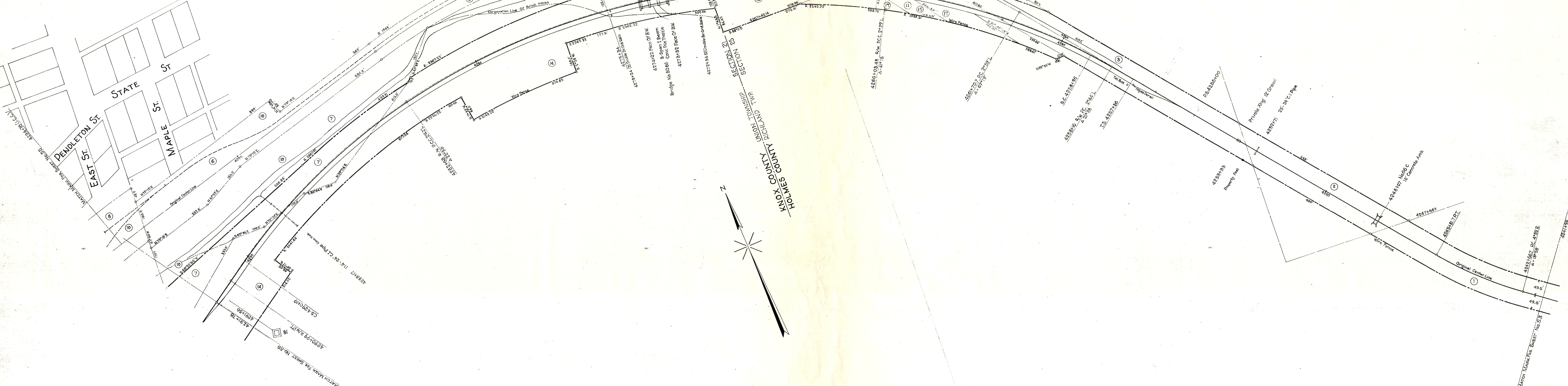


BRINK HAVEN



AS OF	REVISION	YES	NO
1927			
1928			
1929			
1930			
1931			
1932			
1933			
1934			
1935			
1936			

Correct as of Dec. 31st, 1955- No Revision.
 Correct as of Dec. 31st, 1954- No Revision.
 Correct as of Dec. 31st, 1953- No Revision.
 Correct as of Dec. 31st, 1952- No Revision.
 Correct as of Dec. 31st, 1951- No Revision.
 Correct as of Dec. 31st, 1950- No Revision.
 Correct as of Dec. 31st, 1949- No Revision.
 Correct as of Dec. 31st, 1948- No Revision.
 Correct as of Dec. 31st, 1947- No Revision.
 Correct as of Dec. 31st, 1946- No Revision.
 Correct as of Dec. 31st, 1945- No Revision.
 Correct as of Dec. 31st, 1944- No Revision.
 Correct as of Dec. 31st, 1943- No Revision.

CONNECTING RAILWAY
 FORMERLY
 RIGHT OF WAY AND TRACK MAP
 CLEVELAND, AKRON AND CINCINNATI RAILWAY
 OPERATED BY THE
PENNSYLVANIA COMPANY
 AKRON DIVISION

STATION 424+98 TO STATION 429+78

SCALE: 1 IN. = 100 FT. JUNE 30, 1918

OFFICE OF VALUATION ENGINEER
 PITTSBURGH, PA.

CLEVELAND, AKRON & CINCINNATI RAILWAY CO. MERGED
 WITH OTHER CORPORATIONS TO FORM THE PENNSYLVANIA
 OHIO & DETROIT RAILROAD COMPANY JULY 1, 1918