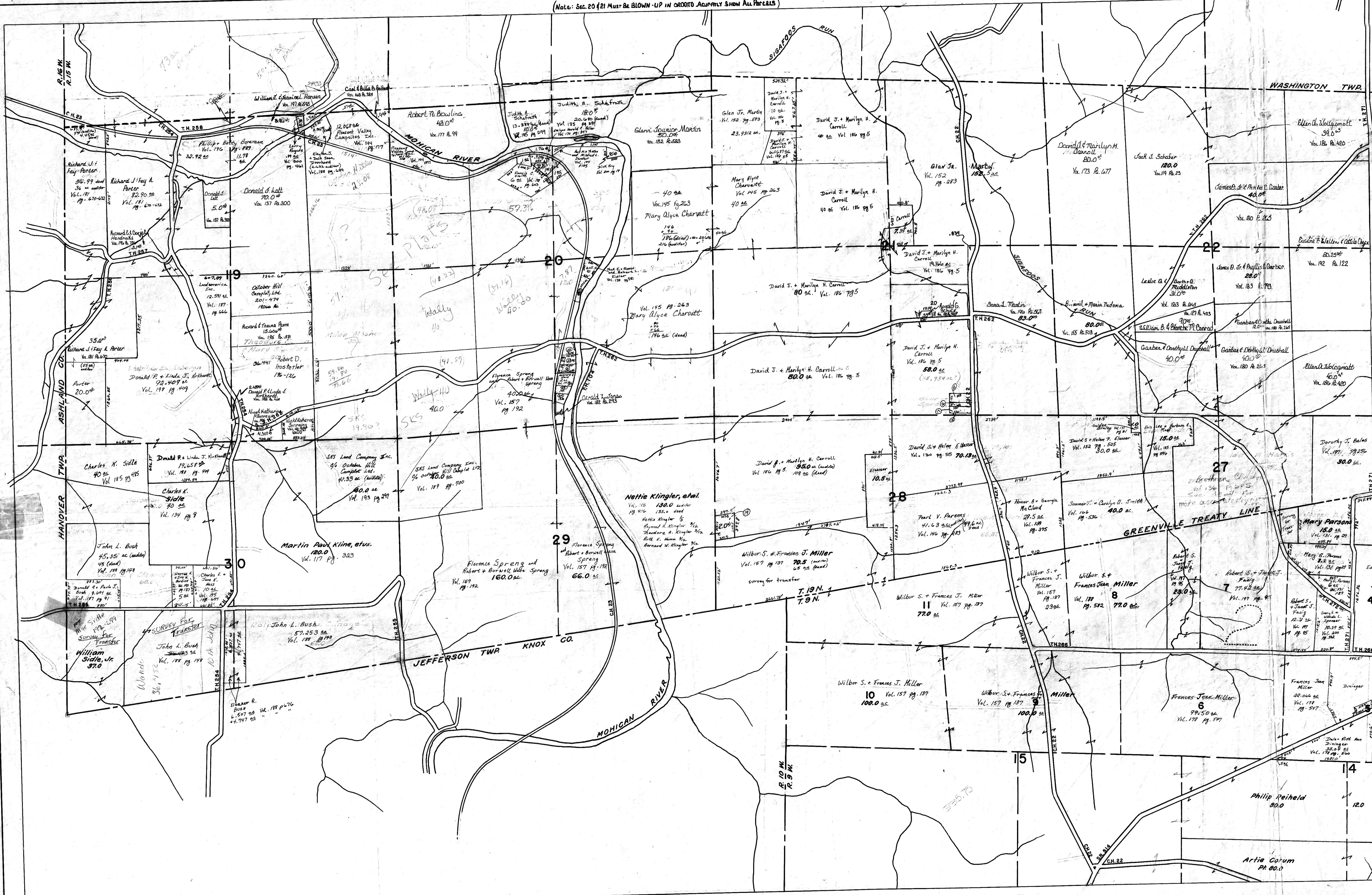


(Note: Sec. 20 & 21 Must Be BLOWN-UP IN CREDIT ACCURATELY SHOW ALL PARCELS)



- 20 Clifford A. Martin  
530 ac Vol. 176 pg. 3
- 25 Clifford A. Martin  
581 ac Vol. 176 pg. 3

- 19 Nettie Klingler et al. 2 ac Vol. 115 pg. 46  
- Nettie Klingler 1/2 portion  
- Raymond A. Klingler 1/4  
- Theodore A. Klingler 1/4  
- Beth E. Hamm 1/4  
- Bernard W. Klingler 1/4
- 20 Herbert C. & Mary L. Altman  
1.074 ac Vol. 196 pg. 238
- 21 Andrew B. Dolence  
1.052 ac Vol. 196 pg. 16
- 22 Thomas M. & Bernadette Curry  
and Mary Ann Gehring  
1.55 ac Vol. 191 pg. 273
- 23 Ralph and Barbara Lindecker  
.992 ac Vol. 172 pg. 238

HOLMES COUNTY  
KNOX TOWNSHIP  
NORTH PART

SCALE: 1" = 660'