

T8, R6, 2nd Qtr. Lot 31 MC-15

T8, R6, 2nd Qtr. Lot 20 MC-15

T8, R7, Sec. 10 MC-09

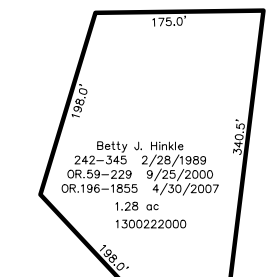
Barbara M. Dugan, trustee
OR.199-229 8/17/2007
100.0 ac
1300077000

T8 R6 2nd Qtr
Lot 32

Mark M. Maxwell
Mary M. Maxwell
194-394 6/14/1976
Grace E. Maxwell, trustee
OR.27-941 3/17/1999
103.49 ac
1300226000

T8 R6 2nd Qtr
Lot 19

CR 58 (60' R/W)
TR 112 (60' R/W)
CR 58 (60' R/W)



T8, R6, 2nd Qtr. Lot 16 MC-20

606.0'
L. Kay Vansickle
L. Lynn Carpenter
OR.213-299 8/25/2009
6.0 ac
1300043000
333.3'

Ray W. Gillman, trustee
280-105 9/25/1997
94.0 ac
1300115000

T8 R6 2nd Qtr
Lot 33

Dan S. and Clara Yoder
155-346 4/30/1965
155-349 4/30/1965
50.0 ac
1300538000

Paul J. and Sara Ann
Herstberger
OR.184-2108 11/1/2005
15.001 ac p.19-534
1300192001

T8 R6 2nd Qtr
Lot 18

Adrian H. Burkholder
Estro D. Burkholder
OR.23-1545
1/26/2012
5.616 ac p.19-706
1300192000

Neal D. and Amanda N.
Yoder
OR.188-2875 5/15/2006
19.125 ac p.19-706
1300192002

Emmanuel M. and Mary Esther Yoder
OR.188-3265 5/18/2006
8.948 ac p.19-706
1300192003

T8, R6, 2nd Qtr. Lot 17 MC-20

T8, R7, Sec. 11 MC-08

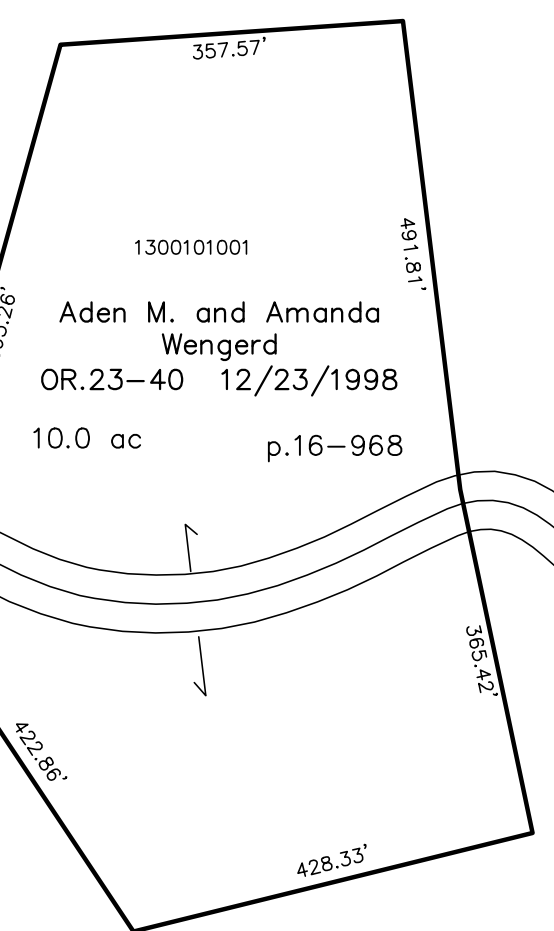
John D. and Mary Miller
234-863 4/16/1987
10.0 ac p.8-652
1300252000

T8 R6 3rd Qtr
Lot 26

Ivan A. and Esther I. Erb
OR.56-227 8/1/2000
90.0 ac
1300249000

Ivan A. and Esther I. Erb
OR.228-980 9/8/2011
90.0 ac
1300101000

T8 R6 3rd Qtr
Lot 27



TR 109 (60' R/W)

TR 109 (60' R/W)

TR 112 (60' R/W)

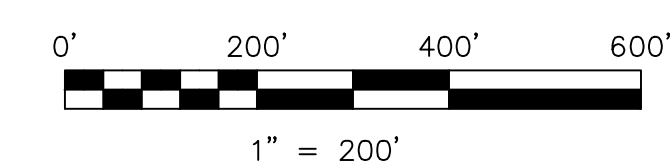
T8, R6, 3rd Qtr. Lot 28 MC-13

T8, R6, 3rd Qtr. Lot 25 MC-13

T8, R6, 3rd Qtr. Lot 11 MC-19

Last Revision: 1/26/2012

**T-8, R-6,
2nd.Qtr. Lots 18,19,32,33
3rd.Qtr. Lots 26,27
Mechanic Twp.
Holmes County, Ohio**



LET IT BE KNOWN, THIS MAP HAS BEEN PREPARED AS A REFERENCE GUIDE TO PROPERTY OWNERSHIP. WE BELIEVE THIS INFORMATION TO BE CORRECT AND CURRENT. HOWEVER IT IS NOT INTENDED FOR ANY LEGAL USE, WHETHER IT BE IN SALES, TRANSFERS, TRAILS, LEASES OF ANY TYPE, ETC. AND DO NOT ACCEPT RESPONSIBILITY FOR ERRORS OF ANY NATURE OR OMISSIONS CONTAINED HEREIN.

new survey required for next transfer

MC-14