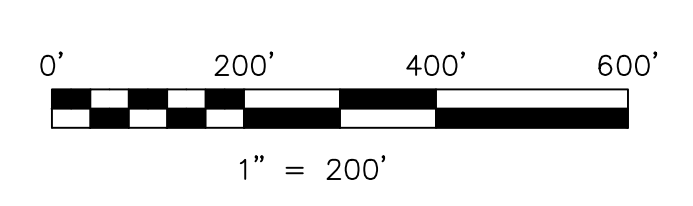


T8, R6, Sec 18 MC-24

T8, R6, Sec 20 MC-34

1300240001 Henry A. and Susie A. Stutzman  
 242-297 2/22/1989  
 0.631 ac p.12-148



LET IT BE KNOWN, THIS MAP HAS BEEN PREPARED AS A REFERENCE GUIDE TO PROPERTY OWNERSHIP. WE BELIEVE THIS INFORMATION TO BE CORRECT AND CURRENT, HOWEVER IT IS NOT INTENDED FOR ANY LEGAL USE, WHETHER IT BE IN SALES, TRANSFERS, TRAILS, LEASES OF ANY TYPE, ETC. AND DO NOT ACCEPT RESPONSIBILITY FOR ERRORS OF ANY NATURE OR OMISSIONS CONTAINED HEREIN.

new survey required for next transfer

Last Revision: 11/27/2012

**T-8, R-6, Sec.19**  
**Mechanic Twp.**  
**Holmes County, Ohio**

# MC-29