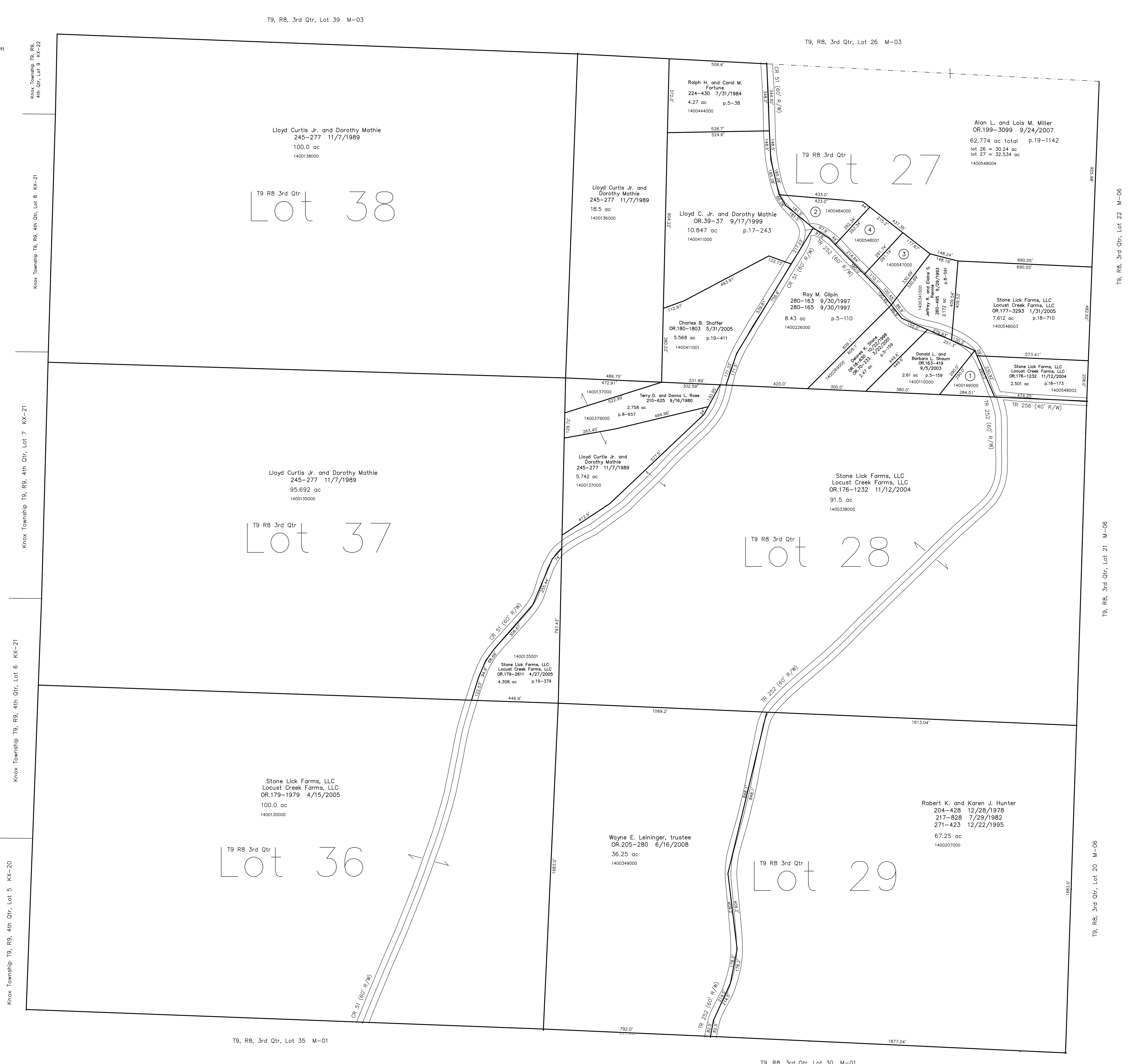


- 1400149000 ① Chad E. and Sherry L. Jarvis
OR.196-620 4/16/2007
0.76 ac p.3-159
- 1400484000 ② Gibbs Enterprises, LLC
OR.192-3355 11/9/2006
1.363 ac p.8-591
- 1400547000 ③ Christopher J. Mast and Megan Sinnett
OR.182-313 7/29/2005
1.363 ac p.8-591
- 1400548001 ④ Christopher J. Mast
OR.188-1397 4/27/2006
1.363 ac p.14-267



LET IT BE KNOWN, THIS MAP HAS BEEN PREPARED AS A REFERENCE GUIDE TO PROPERTY OWNERSHIP. WE BELIEVE THIS INFORMATION TO BE CORRECT AND CURRENT. HOWEVER IT IS NOT INTENDED FOR ANY LEGAL USE, WHETHER IT BE IN SALES, TRANSFERS, TRUSTS, LEASES OF ANY TYPE, ETC. AND DO NOT ACCEPT RESPONSIBILITY FOR ERRORS OF ANY NATURE OR OMISSIONS CONTAINED HEREIN.

new survey required for next transfer

Last Revision: 6/16/2008
T-9, R-8, 3rd. Qtr.
Lots 27,28,29,36,37,38
Monroe Twp.
Holmes County, Ohio

M-02

