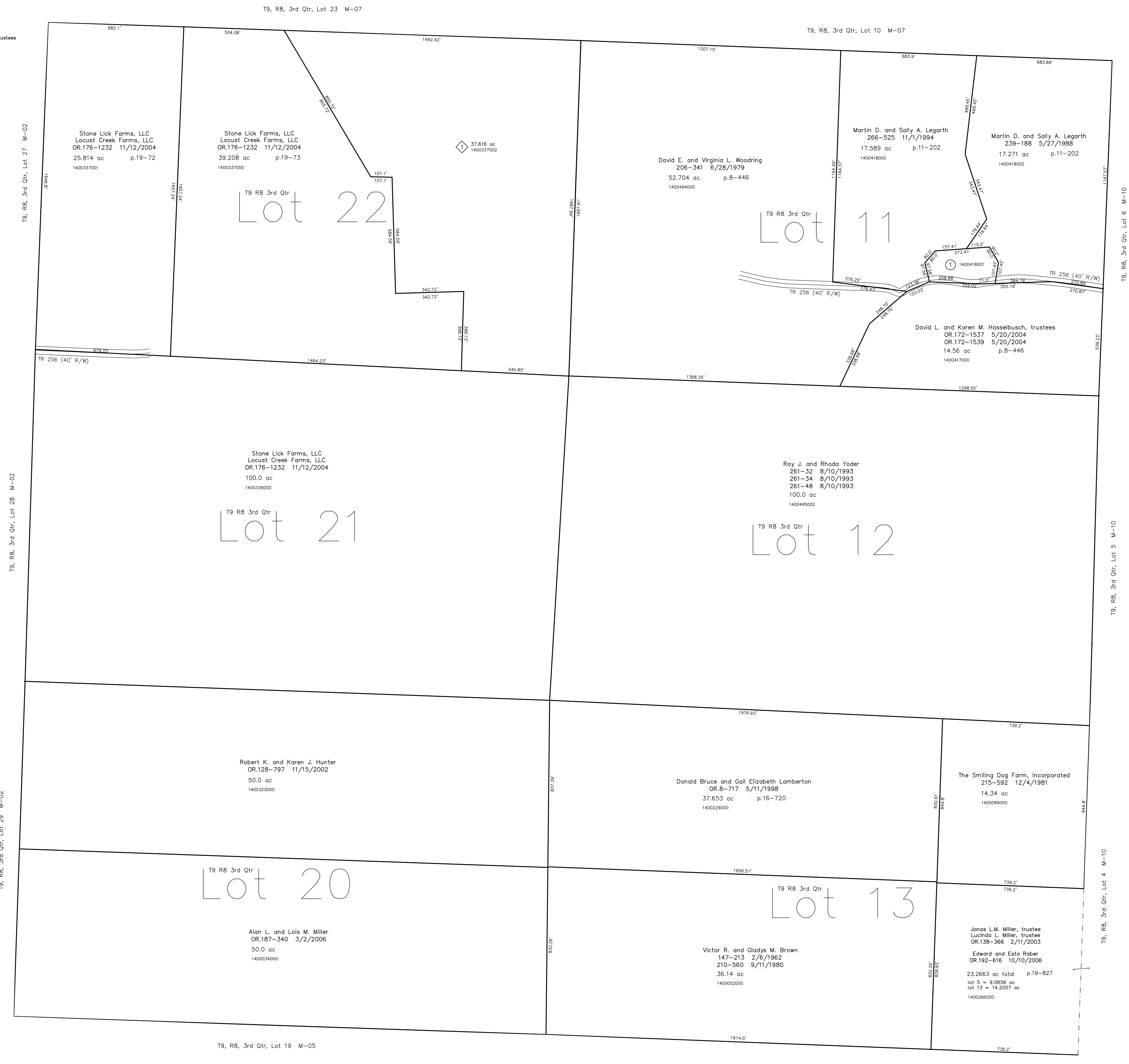
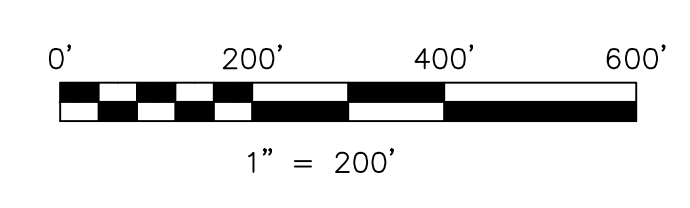


1400418001 David L. and Karen M. Hasselbusch, trustees  
 OR.172-1537 5/20/2004  
 OR.172-1539 5/20/2004  
 1.328 ac p.11-202



Back Forty Subdivision  
 Plat 18-595 Platted 4/24/2003  
 1400337002 Stone Creek Farms, LLC  
 Locust Creek Farms, LLC  
 OR.176-1232 11/12/2004  
 37.616 ac p.18-595



LET IT BE KNOWN, THIS MAP HAS BEEN PREPARED AS A REFERENCE GUIDE TO PROPERTY OWNERSHIP. WE BELIEVE THIS INFORMATION TO BE CORRECT AND CURRENT. HOWEVER IT IS NOT INTENDED FOR ANY LEGAL USE, WHETHER IT BE IN SALES, TRANSFERS, TRAILS, LEASES OF ANY TYPE, ETC. AND DO NOT ACCEPT RESPONSIBILITY FOR ERRORS OF ANY NATURE OR OMISSIONS CONTAINED HEREIN.

new survey required for next transfer

Last Revision: 10/10/2006  
**T-9, R-8, 3rd. Qtr.**  
**Lots 11,12,13,20,21,22**  
**Monroe Twp.**  
**Holmes County, Ohio**

**M-06**

