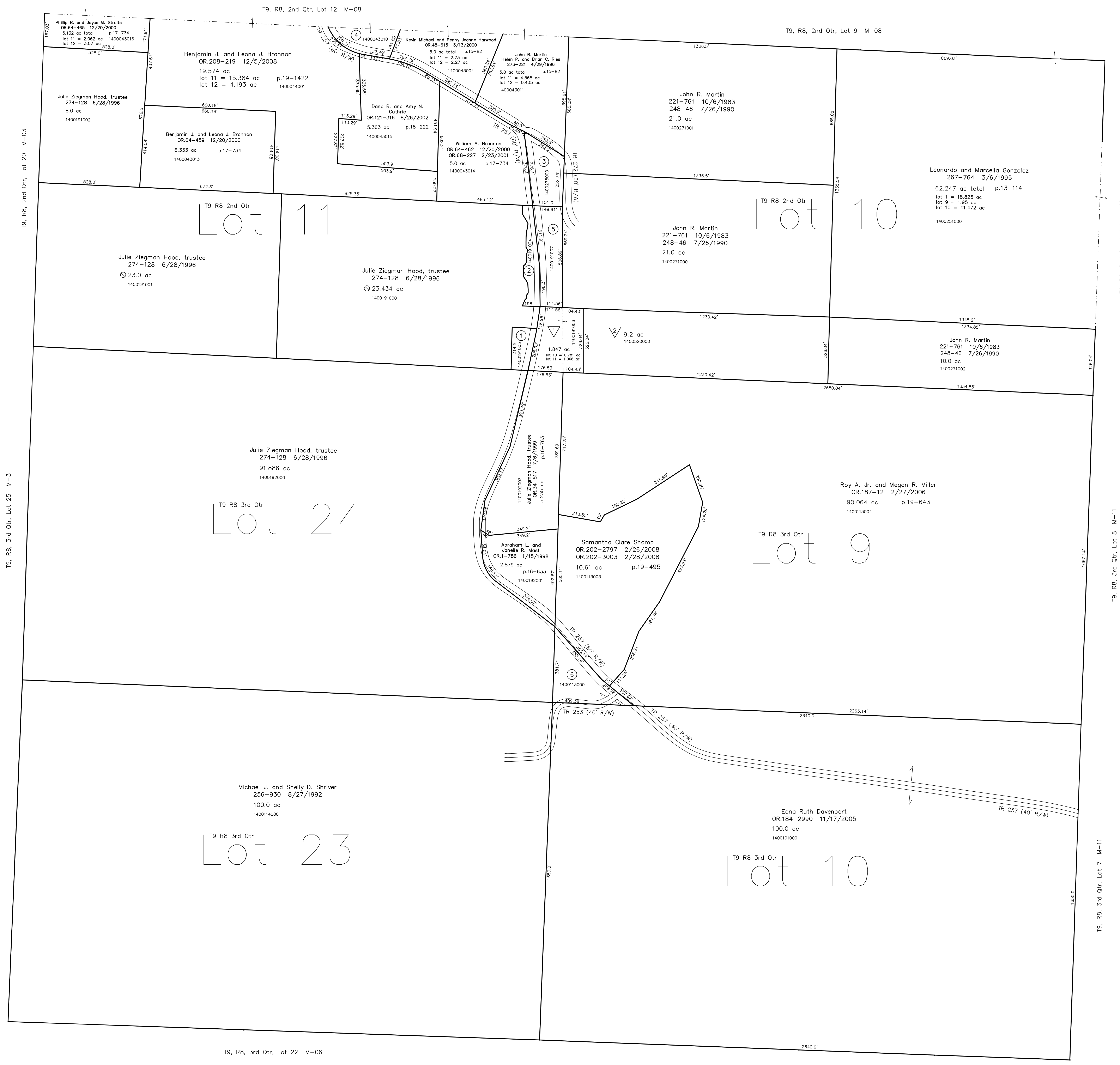
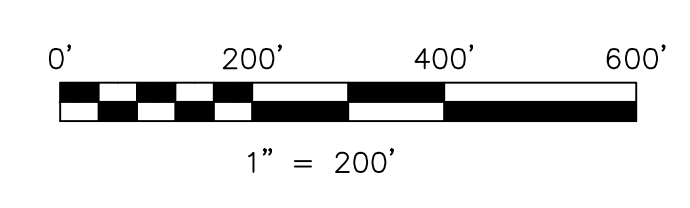


- 1400191003 ① Julie Ziegman Hood, trustee
274-128 6/28/1996
0.244 ac
- 1400191004 ② Julie Ziegman Hood, trustee
274-128 6/28/1996
0.005 ac
- 1400278000 ③ John R. Martin
186-859 4/23/1974
209-481 5/14/1980
248-46 7/26/1990
1.26 ac p.7-229
- 140043010 ④ Aden B. and Mary J. Raber
273-157 4/24/1996
0.855 ac p.15-82
- 1400191007 ⑤ John R. Martin
OR.107-80 3/13/2002
1.451 ac p.18-232
- 1400113000 ⑥ Michael J. and Shelly D. Shriver
OR.127-22 10/20/2002
1.657 ac p.12-464



- Way-Fare Subdivision
Plat 18-249 Platted 4/3/2002
- 1400191006 ⑦ Wayne C. Fair
OR.156-572 7/15/2003
OR.181-2227 7/11/2005
1.847 ac p.18-249
- 1400520000 ⑧ Kevin E. and Sue Ann Fair
OR.110-407 4/18/2002
9.2 ac p.18-249



LET IT BE KNOWN, THIS MAP HAS BEEN PREPARED AS A REFERENCE GUIDE TO PROPERTY OWNERSHIP. WE BELIEVE THIS INFORMATION TO BE CORRECT AND CURRENT. HOWEVER IT IS NOT INTENDED FOR ANY LEGAL USE, WHETHER IT BE IN SALES, TRANSFERS, TRADES, LEASES OF ANY TYPE, ETC. AND DO NOT ACCEPT RESPONSIBILITY FOR ERRORS OF ANY NATURE OR OMISSIONS CONTAINED HEREIN.

new survey required for next transfer

Last Revision: 12/5/2008
T-9, R-8,
2nd. Qtr. Lots 10,11
3rd. Qtr. Lots 9,10,23,24
Monroe Twp.
Holmes County, Ohio
M-07

T9, R8, 2nd Qtr. Lot 1 M-11
T9, R8, 3rd Qtr. Lot 9 M-11
T9, R8, 3rd Qtr. Lot 10 M-11
T9, R8, 3rd Qtr. Lot 7 M-11