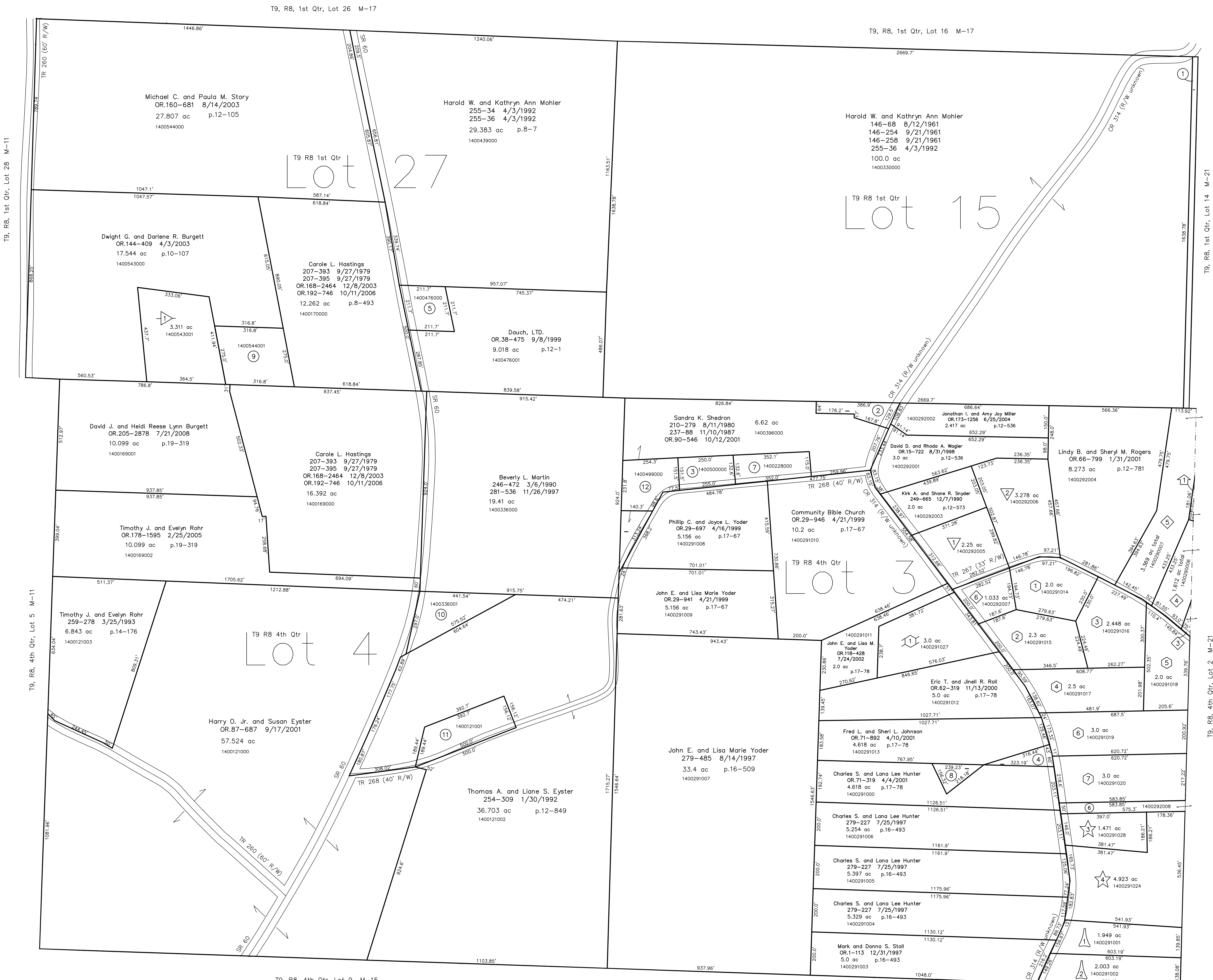
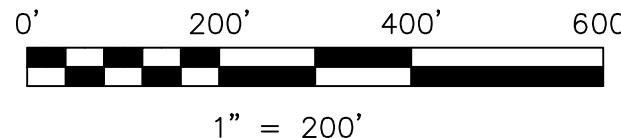


- 1400448000 ① Vva A. Fetter, trustee
OR.3-783 2/23/1998
1.0 ac
- 1400397000 ② Sandra K. Shedron
157-535 2/10/1986
210-279 8/11/1980
237-88 11/10/1987
OR.86-546 10/12/2001
0.71 ac p.4-82
- 1400500000 ③ Phillip C. and Joyce L. Yoder
201-552 4/17/1978
255-169 4/14/1992
0.81 ac p.4-133
- 1400291025 ④ Charles S. and Lana Lee Hunter
OR.78-944 6/21/2001
0.382 ac p.17-902
- 1400476000 ⑤ Dauch, LTD.
OR.38-475 9/8/1999
1.0 ac p.12-35
- 1400292008 ⑥ Robert and Laurie Lenchman
285-540 8/15/1994
0.665 ac p.14-580
- 1400228000 ⑦ Cheryl M. Scott
OR.78-942 6/21/2001
OR.188-2194 5/5/2006
1.0 ac p.7-6
- 1400291026 ⑧ Fred L. and Sheri L. Johnson
OR.78-942 6/21/2001
0.382 ac p.17-902
- 1400544001 ⑨ Carole L. Hastings
241-218 11/15/1988
OR.168-2464 12/8/2003
OR.192-746 10/11/2006
1.0 ac p.12-96
- 1400336001 ⑩ Randy and Diana K. Dillon
248-953 10/10/1990
1.48 ac p.12-539
- 1400121001 ⑪ Thomas A. and Liane S. Eyster
235-87 8/8/1987
1.6 ac p.10-735
- 1400499000 ⑫ Phillip C. and Joyce L. Yoder
191-79 6/19/1975
255-169 4/14/1992
1.22 ac p.4-82



- Country Lane Subdivision
Plat 19-1245 Platted 2/13/2008
- 1400543001 David J. and Heidi Reese Lynn Burgett
OR.205-2878 7/21/2008
10.099 ac p.19-319
- Beach Tree Knoll Subdivision
Plat 18-417 Platted 10/23/2002
- 1400291027 Terry W. and Gail A. Robinson
OR.126-658 10/28/2002
3.0 ac p.18-417
- Berry Patch Estates Allotment No.1
Plat 13-143 Platted 12/2/1991
- 1400292005 Laurin K. Vaccorillo
OR.8-187 4/30/1994
2.25 ac p.13-143
- 1400292006 David N. and Andrea P. Most
254-835 3/13/1992
OR.188-945 4/24/2006
3.278 ac p.13-143
- Berry Patch Estates Allotment No.3
Plat 13-166 Platted 8/13/1992
- 1400290005 Bryan A. Black
263-981 4/6/1994
1.858 ac p.13-166
- 1400290006 Matthew S. and Marcla L. Stutzman
256-893 8/26/1992
1.612 ac p.13-166
- 1400290007 Brent L. and Darlene Stein
265-467 8/9/1994
3.369 ac p.13-166
- 1400292007 Ronald A. and Charlotte M. Klein
OR.172-202 5/7/2004
1.033 ac p.13-166
- Berry Patch Estates Allotment No.5
Plat 15-15 Platted 9/21/1993
- 1400291001 Jeffrey L. and Tressa B. Hart
273-203 4/26/1996
1.949 ac p.15-15
- 1400291002 Timothy S. Miller
OR.168-2834 12/12/2003
2.003 ac p.15-15
- Berry Patch Estates Allotment No.6
Plat 19-196 Platted 9/16/2004
- 1400291028 Tiffany S. Gallon and Noah G. Hershberger
OR.198-2239 7/26/2007
1.471 ac p.19-196
- 1400291024 Mark C. and Kathy M. Stitzlein
OR.198-2001 7/25/2007
4.923 ac p.19-196

- Berry Patch Estates Allotment No.7
Plat 2-297 Platted 6/8/1999
- 1400291014 Gary Lee and Janet M. Hanna
OR.33-103 6/11/1999
2.0 ac p.2-297
- 1400291015 Moe J. Schlabach
OR.175-1000 9/23/2004
2.3 ac p.2-297
- 1400291016 Jason B. Miller and Kimberly M. Mengel
OR.33-157 6/11/1999
2.448 ac p.2-297
- 1400291017 Gerald W. and Christina A. Hayes
OR.33-99 8/11/1999
2.5 ac p.2-297
- 1400291018 Bruce and Annette Levensood
OR.52-409 5/19/2000
2.0 ac p.2-297
- 1400291019 Stephen N. and Sheri M. Martin
OR.195-3081 4/2/2007
3.0 ac p.2-297
- 1400291020 Thomas Klein
OR.33-105 6/11/1999
3.0 ac p.2-297
- Berry Patch Estates Allotment No.8
Plat 19-636 Platted 2/16/2006
- 1400290020 Rodney A. and Rhonda M. Ling
OR.64-223 12/15/2000
8.793 ac p.19-636



LET IT BE KNOWN, THIS MAP HAS BEEN PREPARED AS A REFERENCE GUIDE TO PROPERTY OWNERSHIP. WE BELIEVE THIS INFORMATION TO BE CORRECT AND CURRENT. HOWEVER IT IS NOT INTENDED FOR ANY LEGAL USE, WHETHER IT BE IN SALES, TRANSFERS, TRADES, LEASES OF ANY TYPE, ETC. AND DO NOT ACCEPT RESPONSIBILITY FOR ERRORS OF ANY NATURE OR OMISSIONS CONTAINED HEREIN.

new survey required for next transfer

Last Revision: 7/21/2008

**T-9, R-8,
1st. Qtr. Lots 15,27
4th. Qtr. Lots 3,4
Monroe Twp.
Holmes County, Ohio**

M-16

