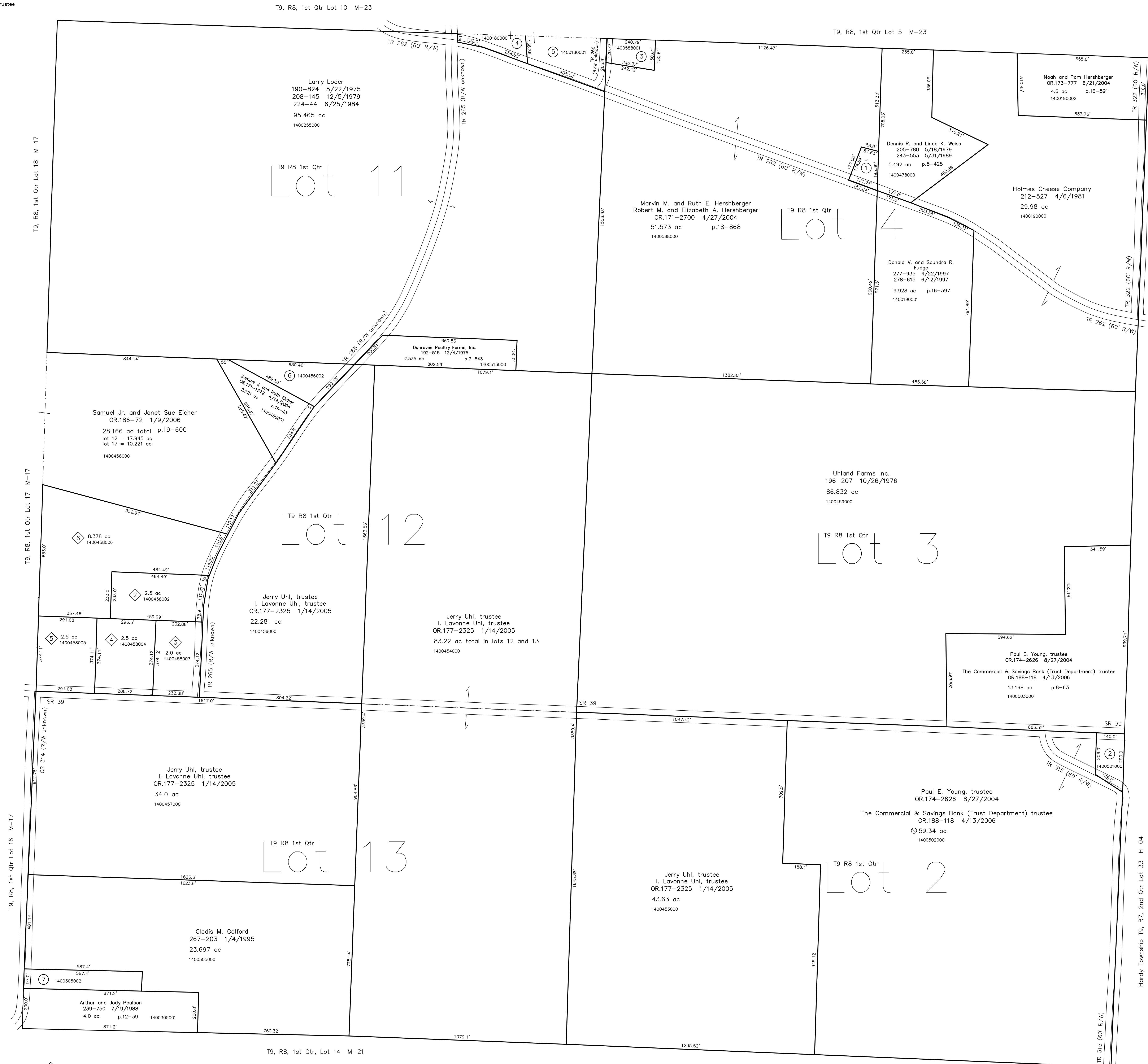


- 1400587000 ① Dennis R. and Linda K. Weiss
225-377 11/7/1984
243-553 5/31/1989
0.50 ac p.10-330
- 1400510000 ② Paul E. Young, trustee
OR.174-2626 8/27/2004
The Commercial & Savings Bank (Trust Department), trustee
OR.188-118 4/13/2006
0.66 ac
- 1400588001 ③ Gregg Galbraith
Laura S. Schrock
232-663 9/6/1991
0.75 ac p.12-740
- 1400180000 ④ Marvin M. and Ruth E. Hershberger
Robert M. and Elizabeth A. Hershberger
OR.171-2705 4/27/2004
0.651 ac p.18-868
- 1400180001 ⑤ Marvin M. and Ruth E. Hershberger
Robert M. and Elizabeth A. Hershberger
OR.171-2703 4/27/2004
1.828 ac p.19-53
- 1400456002 ⑥ Joseph and Sarah Hochstetler
OR.197-36 5/16/2007
1.579 ac p.19-824
- 1400305002 ⑦ Gladis M. Gafford
267-203 1/4/1995
1.303 ac

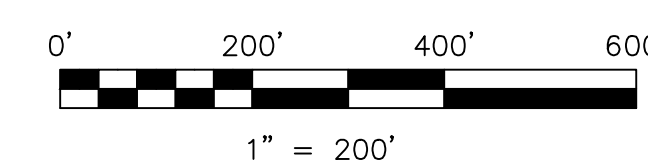


Country Hills Subdivision
Plat 19-713 Platted 5/19/2006

- 1400458002 ② Larry D. Loder and Thomas J. Klein
OR.197-2246 6/12/2007
2.5 ac p.19-713
- 1400458003 ③ Larry D. Loder and Thomas J. Klein
OR.197-2246 6/12/2007
2.0 ac p.19-713
- 1400458004 ④ Larry D. Loder and Thomas J. Klein
OR.197-2246 6/12/2007
2.5 ac p.19-713
- 1400458005 ⑤ Larry D. Loder and Thomas J. Klein
OR.197-2246 6/12/2007
2.5 ac p.19-713

Country Hills Subdivision Replat
Plat 19-1019 Platted 5/10/2007

- 1400458006 ⑥ Larry D. Loder and Thomas J. Klein
OR.197-2250 6/12/2007
8.378 ac p.19-1019



LET IT BE KNOWN, THIS MAP HAS BEEN PREPARED AS A REFERENCE GUIDE TO PROPERTY OWNERSHIP. WE BELIEVE THIS INFORMATION TO BE CORRECT AND CURRENT. HOWEVER IT IS NOT INTENDED FOR ANY LEGAL USE, WHETHER IT BE IN SALES, TRANSFERS, TRUSTS, LEASES OF ANY TYPE, ETC. AND DO NOT ACCEPT RESPONSIBILITY FOR ERRORS OF ANY NATURE OR OMISSIONS CONTAINED HEREIN.

new survey required for next transfer

Last Revision: 6/12/2007

T-9, R-8, 1st. Qtr.
Lots 2,3,4,11,12,13
Monroe Twp.
Holmes County, Ohio

M-22

Hardy Township T9, R7, 2nd Qtr Lot 35 H-04

Hardy Township T9, R7, 2nd Qtr Lot 34 H-04

Hardy Township T9, R7, 2nd Qtr Lot 33 H-04