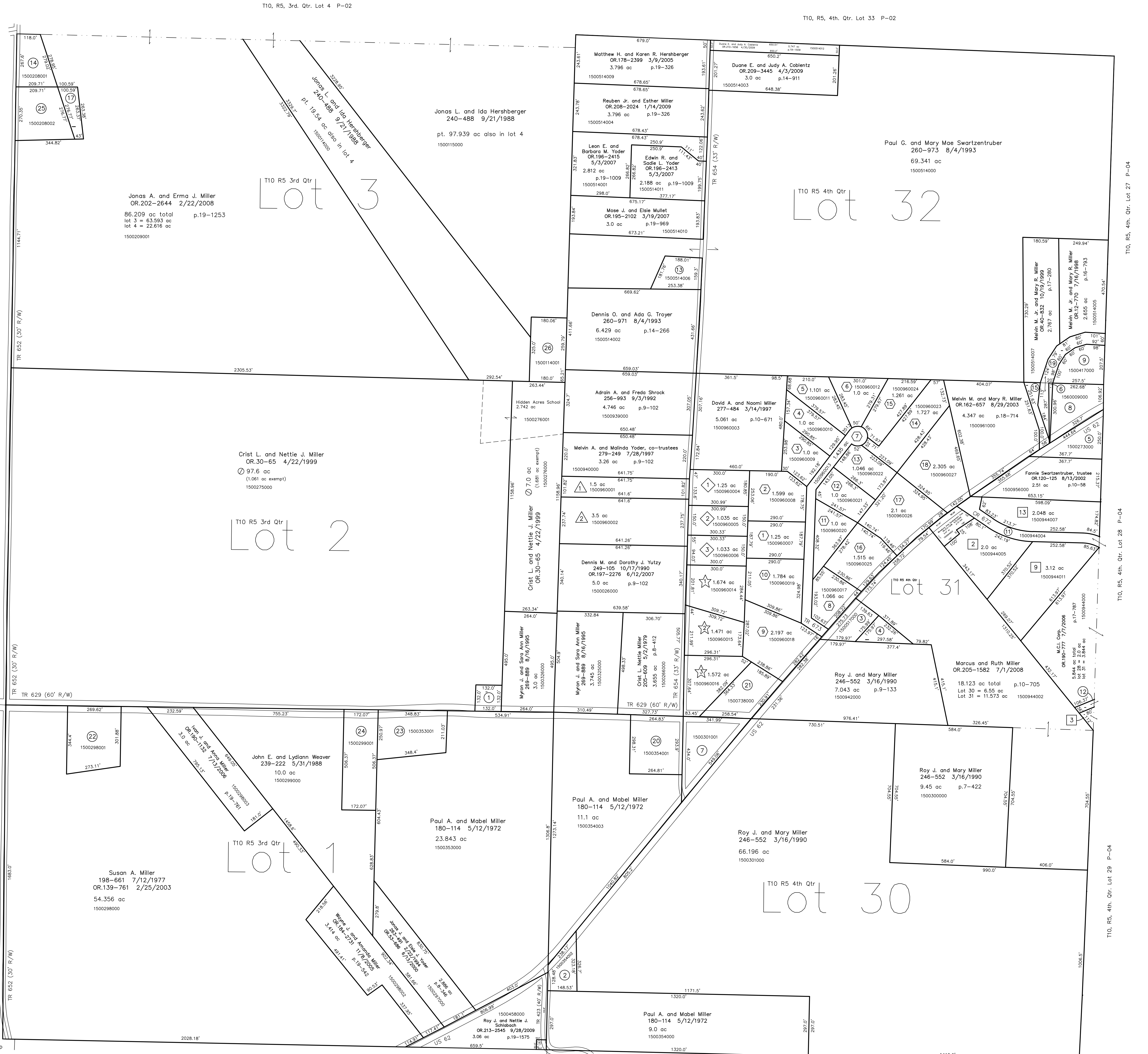


- 1500326001 ① Myron J. and Sara Ann Miller  
269-889 8/16/1995  
0.4 ac
- 1500354002 ② Paul A. and Mabel Miller  
180-114 5/12/1971  
0.75 ac
- 1500517000 ③ Joseph L. and Karen Elaine McBride  
233-802 12/26/1986  
0.735 ac p.8-236
- 1500944001 ④ Joseph L. and Karen Elaine McBride  
233-802 12/26/1986  
0.469 ac p.10-875
- 1500273000 ⑤ Dennis D. and Gladys C. Miller  
209-38 3/14/1990  
231-570 6/19/1986  
0.469 ac p.8-385
- 1500958000 ⑥ Pleasant View Mennonite Church  
218-460 10/7/1982  
0.068 ac p.9-142
- 1500301001 ⑦ Daniel W. Steiner and Harley S. Hochstetler  
OR.176-888 11/8/2004  
1.704 ac p.19-238
- 1560009000 ⑧ Trustees of Amish Mennonite Conservative Church  
(the Pleasant View Congregation)  
103-461 4/28/1936  
1.23 ac
- 1500417000 ⑨ Pleasant View Conservative Mennonite Church  
154-31 1/27/1984  
1.061 ac p.4-33
- 0000000000 ⑩ not used
- 1500944004 ⑪ Holmes County Board of Commissioners  
248-986 10/10/1990  
270-164 8/6/1995  
0.913 ac p.13-120 p.15-62
- 1500519004 ⑫ Yutzky Woodworking, Ltd.  
OR.209-3045 3/27/2009  
0.079 ac p.14-381
- 1500514006 ⑬ Wayne G. Swartzentruber  
OR.64-203 12/15/2000  
1.83 ac p.16-908
- 1500208001 ⑭ Willie E. Troyer and Mary Yoder  
OR.37-109 8/17/1999  
1.0 ac p.17-192
- 1500961001 ⑮ Melvin M. and Mary R. Miller  
OR.47-187 2/15/2003  
0.333 ac p.17-368
- 0000000000 ⑯ not used
- 1500208003 ⑰ Roy J. and Ida E. Mast  
OR.101-216 1/28/2002  
0.436 ac p.18-198
- 1500458001 ⑱ Ben J. and Erma Miller  
OR.134-664 1/8/2003  
0.058 ac p.18-995
- 1500514008 ⑲ Pleasant View Mennonite Church  
OR.178-1092 2/17/2005  
0.819 ac p.19-314
- 1500354001 ⑳ Leroy Joy and Marie Keim  
266-210 10/4/1994  
1.8 ac p.14-622
- 1500738000 ㉑ Holmes Laboratory, Inc.  
OR.19-202 10/29/1998  
1.297 ac p.8-262
- 1500298001 ㉒ Paul J. and Katie J. Miller  
OR.31-337 5/11/1999  
2.0 ac p.17-1000
- 1500353001 ㉓ Mark P. and Malinda Miller  
253-558 11/25/1991  
1.841 ac p.12-799
- 1500299001 ㉔ Jonas E. and Marietta Miller  
252-434 8/7/1991  
2.0 ac p.12-724
- 1500208002 ㉕ Roy J. and Ida E. Mast  
OR.35-782 7/26/1999  
1.565 ac p.17-192
- 1500114001 ㉖ David G. Swartzentruber  
OR.50-261 4/10/2000  
1.343 ac p.18-459



- East Holmes Industrial Park Allotment No.2  
Plat 13-179 Platted 2/2/1993
- 1500944005 ② Quarter Circle L OH Investment LLC  
OR.188-2287 5/8/2006  
2.0 ac p.13-119
- East Holmes Industrial Park Allotment No.3  
Plat 13-197 Platted 7/16/1993
- 1500944006 ③ Yutzky Woodworking, Ltd.  
OR.209-3045 3/27/2009  
0.099 ac (pt. 2.0 ac total)
- East Holmes Industrial Park Allotment No.5  
Plat 2-329 Platted 2/15/2001
- 1500944011 ⑨ Quarter Circle L OH Investment LLC  
OR.188-2287 5/8/2006  
3.12 ac p.2-329
- 1500944007 ⑬ Timberstone Ltd.  
OR.68-1 2/20/2001  
2.048 ac p.2-329
- Swartzentruber Allotment No.1  
Plat 2-194 Platted 12/12/1986
- 1500960001 ① Edwin D. and Frances K. Troyer  
233-791 12/23/1986  
1.5 ac p.2-194
- 1500960002 ② Marvin A. and Clara M. Troyer  
OR.198-2505 5/4/2007  
3.5 ac p.2-194

- Swartzentruber Allotment No.2  
Plat 13-131 Platted 4/2/1991
- 1500960004 ④ Olen J. and Mary A. Miller  
280-274 10/10/1997  
1.066 ac p.2-428
- 1500960005 ⑤ Raymond M. and Laurie R. Miller  
OR.82-521 7/25/2001  
2.197 ac p.2-428
- 1500960006 ⑥ Raymond M. and Laurie Miller  
264-628 6/1/1994  
1.035 ac p.13-131
- Swartzentruber Allotment No.3  
Plat 2-267 Platted 1/3/1997
- 1500960007 ⑦ Mervin M. and Mary Ellen Miller  
277-774 4/9/1997  
1.25 ac p.2-267
- 1500960008 ⑧ Mervin M. and Mary Ellen Miller  
OR.132-301 12/16/2002  
OR.132-304 12/16/2002  
1.599 ac p.2-267
- 1500960009 ⑨ Bruce G. Blanke, trustee  
OR.205-713 6/18/2008  
1.0 ac p.2-267
- 1500960010 ⑩ Bruce G. Blanke, trustee  
OR.205-2191 7/9/2008  
1.0 ac p.2-267
- 1500960011 ⑪ Wayne S. and Mandee K. Schlabach  
OR.209-1074 2/27/2009  
1.101 ac p.2-267
- 1500960012 ⑫ Samuel J. and Sandra K. Stoltz  
OR.37-979 8/31/1999  
1.0 ac p.2-267
- 1500960013 ⑬ The Holmes County Board of Commissioners  
OR.187-426 3/3/2006  
OR.183-2220 9/30/2005 p.19-511  
1.435 ac p.2-267

- Swartzentruber Allotment No.3-First Addition  
Plat 2-428 Platted 5/23/2006
- 1500960017 ⑦ Junior Swartzentruber, trustee  
OR.215-1883 12/18/2009  
1.066 ac p.2-428
- 1500960018 ⑧ Junior Swartzentruber, trustee  
OR.215-1883 12/18/2009  
2.197 ac p.2-428
- 1500960019 ⑩ Junior Swartzentruber, trustee  
OR.215-1883 12/18/2009  
1.784 ac p.2-428
- 1500960020 ⑪ Junior Swartzentruber, trustee  
OR.215-1883 12/18/2009  
1.0 ac p.2-428
- 1500960021 ⑫ Junior Swartzentruber, trustee  
OR.215-1883 12/18/2009  
1.0 ac p.2-428
- 1500960022 ⑬ Theron J. and Betty J. Maloney  
OR.199-557 8/21/2007  
1.046 ac p.2-428
- 1500960023 ⑭ Junior Swartzentruber, trustee  
OR.215-1883 12/18/2009  
1.727 ac p.2-428
- 1500960024 ⑮ Junior Swartzentruber, trustee  
OR.215-1883 12/18/2009  
1.261 ac p.2-428
- Swartzentruber Allotment No.3-Second Addition  
Plat 2-438 Platted 11/2/2006  
rerecorded Plat 2-454 Platted 12/27/2007
- 1500960025 ⑯ Pleasant View Holdings, LLC  
OR.201-2672 12/31/2007  
1.515 ac p.2-438
- 1500960026 ⑰ Junior Swartzentruber, trustee  
OR.215-1883 12/18/2009  
2.1 ac p.2-438
- 1500960027 ⑱ Junior Swartzentruber, trustee  
OR.215-1883 12/18/2009  
2.305 ac p.2-438

Swartzentruber Allotment No.4  
Plat 18-588 Platted 4/14/2003

- 1500960014 ④ Raymond M. and Laurie Miller  
OR.147-382 4/30/2003  
1.471 ac p.18-588
- 1500960015 ⑤ Wayne I. and Maryanna M. Weaver  
OR.147-382 4/30/2003  
1.471 ac p.18-588
- 1500960016 ⑥ Reuben Jr. and Esther Miller  
OR.148-1673 5/8/2003  
1.272 ac p.18-588

Scale: 1" = 200'

Legend: ☆ new survey required for next transfer

Last Revision: 12/18/2009

**T-10, R-5,  
3rd. Qtr. Lots 1,2,3  
4th. Qtr. Lots 30,31,32  
Paint Twp.  
Holmes County, Ohio**

**P-01**