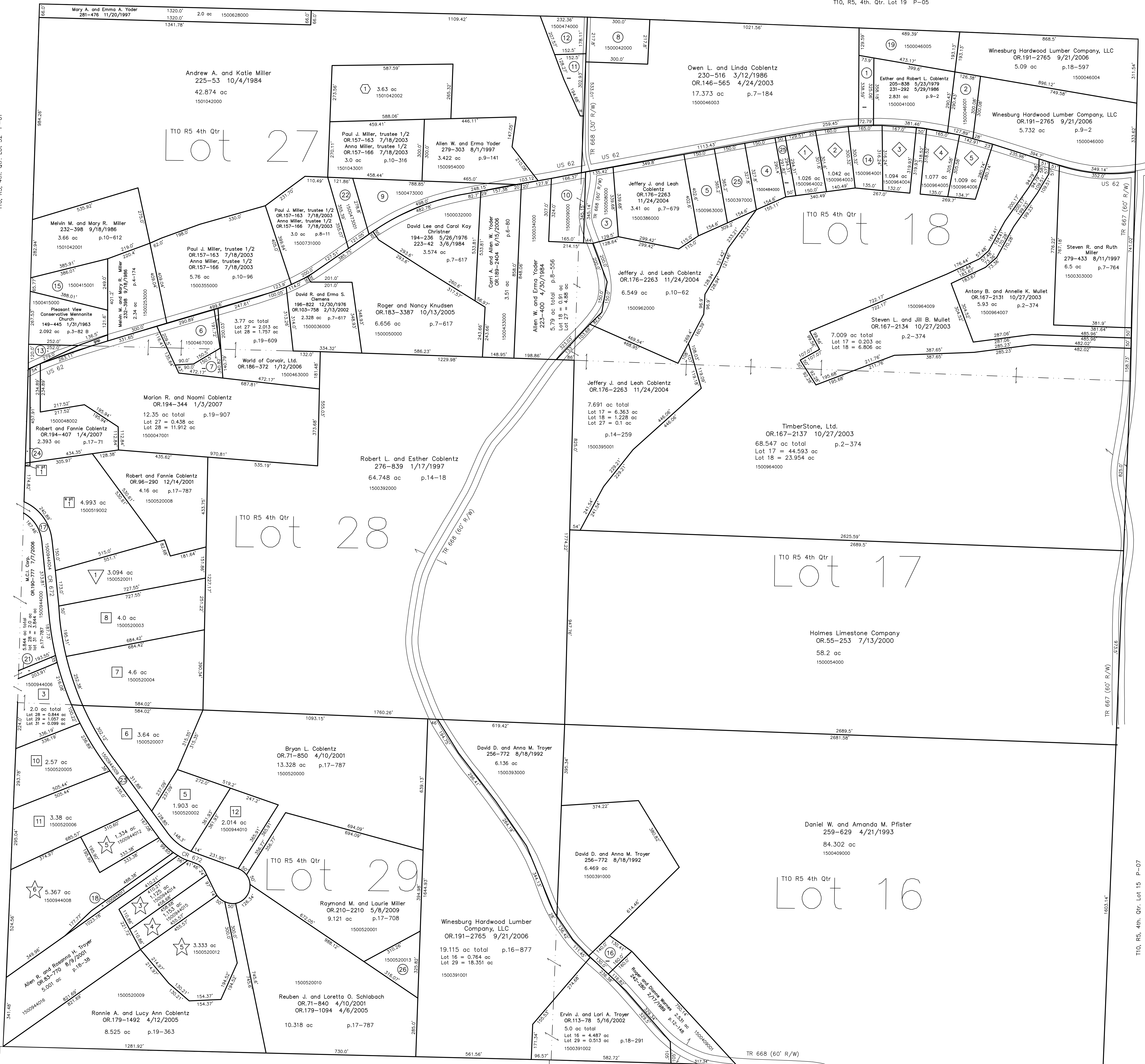


- 1500046002 ① Robert L. and Esther R. Coblentz  
230-314 3/12/1986  
0.555 ac p.10-537
- 1500046001 ② Winesburg Chair Company, Ltd.  
OR.197-2598 6/14/2007  
0.584 ac p.9-2
- 1500508000 ③ Jonathan W. Sprunger and Stephen Berg  
213-372 6/19/1981  
1.05 ac p.7-679
- 1500484000 ④ Owen L. and Linda O. Coblentz  
265-444 8/5/1994  
268-979 6/9/1995  
1.064 ac p.7-679
- 1500963000 ⑤ Jeffery J. and Leah Coblentz  
OR.176-2263 11/24/2004  
1.322 ac p.7-679
- 1500467000 ⑥ Jon M. and Cassie R. Most  
OR.173-541 8/18/2004  
1.266 ac p.18-102
- 1500463001 ⑦ Jon M. and Cassie R. Most  
OR.173-541 8/18/2004  
0.452 ac p.18-102
- 1500042000 ⑧ Verno Coblentz  
196-166 10/20/1976  
259-252 3/23/1993  
1.5 ac p.7-679
- 1500473000 ⑨ Paul Mark and Beverly Sue Miller  
275-666 10/11/1990  
OR.13-717 6/19/1998  
1.851 ac p.5-149
- 1500509000 ⑩ Jonathan W. Sprunger and Stephen Berg  
213-372 6/19/1981  
1.267 ac p.7-679
- 1501043000 ⑪ Junior Swartzentruber, trustee  
OR.120-130 8/13/2002  
0.602 ac p.9-64
- 1500474000 ⑫ Junior Swartzentruber, trustee  
OR.120-130 8/13/2002  
0.819 ac p.9-64
- 1500416000 ⑬ Pleasant View Conservative Mennonite Church  
149-445 1/21/1963  
0.35 ac p.3-82B
- 1500964001 ⑭ Conrad G. and Ruth A. Troyer  
OR.177-80 12/13/2004  
1.050 ac p.12-628
- 1500415001 ⑮ Melvin M. and Mary R. Miller  
OR.178-1094 2/17/2005  
1.358 ac p.19-314
- 1500582000 ⑯ Roger and Dianne Warnes  
207-17 8/13/1979  
0.447 ac p.8-470
- 1500944004 ⑰ Holmes County Board of Commissioners  
248-986 10/10/1990  
270-164 8/9/1995  
1.183 ac p.13-120
- 1500944017 ⑱ Allen R. and Ros Anna H. Troyer  
OR.185-2048 12/20/2005  
0.333 ac p.19-582
- 1500046005 ⑲ Robert L. and Esther R. Coblentz  
OR.188-3202 5/17/2006  
1.775 ac p.18-712
- 1500964008 ⑳ Owen L. and Linda O. Coblentz  
282-597 12/6/1993  
0.336 ac p.14-375
- 1500519004 ㉑ Yutz Woodworking, Ltd.  
OR.209-3045 3/27/2009  
0.16 ac p.14-381
- 1500473001 ㉒ Paul J. Miller, trustee 1/2  
Anna Miller, trustee 1/2  
OR.157-163 7/18/2003  
OR.157-166 7/18/2003  
0.835 ac p.14-339
- 1500944009 ㉓ Holmes County Board of Commissioners  
281-489 11/21/1997  
1.912 ac p.16-586
- 1500048001 ㉔ Fannie Swartzentruber, trustee  
OR.215-1887 12/18/2009  
0.165 ac p.17-71
- 1500397000 ㉕ Bryan Coblentz  
OR.195-788 2/28/2007  
1.193 ac p.7-679
- 1500520013 ㉖ Reuben J. and Loretta O. Schlabach  
OR.209-825 2/24/2009  
1.0 ac p.19-1469

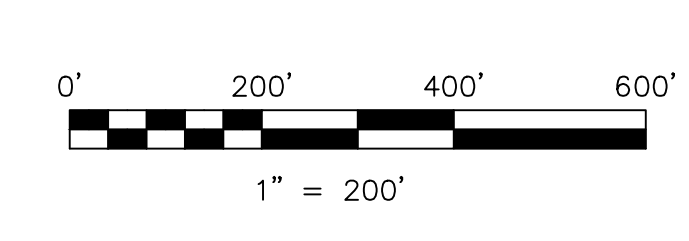
T10, R5, 4th. Qtr. Lot 32 P-01  
T10, R5, 4th. Qtr. Lot 31 P-01  
T10, R5, 4th. Qtr. Lot 30 P-01



Walnut Creek Township T9, R5, 1st. Qtr. Lot 4 WC-11  
Walnut Creek Township T9, R5, 1st. Qtr. Lot 3 WC-11  
Walnut Creek Township T9, R5, 1st. Qtr. Lot 2 WC-17

- ① Seven Lick Estates  
Plat 13-172 Platted 10/16/1992
- ② Owen L. and Linda O. Coblentz  
262-597 12/6/1993  
1.026 ac p.13-172
- ③ Karen E. and William E. Roloff  
OR.195-568 2/22/2007  
1.042 ac p.13-172
- ④ Hal V. and Shannon M. Stutzman  
260-531 7/1/1993  
1.094 ac p.13-172
- ⑤ Merlin R. Coblentz  
OR.199-721 8/23/2007  
1.077 ac p.13-172
- ⑥ Charles B. Kratzer  
OR.199-210 8/17/2007  
1.009 ac p.13-172
- ⑦ Blackberry Acres Subdivision  
Plat 18-148 Platted 12/12/2001
- ⑧ Marion Ray and Ruby Miller  
OR.96-286 12/14/2001  
3.094 ac p.18-148
- ⑨ Coblentz Cove  
Plat 18-214 Platted 2/26/2002
- ⑩ Michael R. and Marie M. Coblentz  
OR.87-405 9/14/2001  
3.63 ac p.18-214
- ⑪ Click Estates  
Plat 17-866 Platted 5/8/2001
- ⑫ R & T Miller, Ltd.  
OR.170-3190 3/25/2004  
1.125 ac p.17-866
- ⑬ R & T Miller, Ltd.  
OR.170-3190 3/25/2004  
1.153 ac p.17-866
- ⑭ Click Estates First Addition  
Plat 19-325 Platted 3/8/2005
- ⑮ R & T Miller, Ltd.  
OR.179-2487 4/28/2005  
3.333 ac p.19-325
- ⑯ Click Estates Second Addition  
Plat 19-623 Platted 2/3/2006
- ⑰ James J. and Ina N. Kline  
OR.170-2351 3/16/2004  
OR.187-1573 3/20/2006  
1.334 ac p.19-623
- ⑱ Edwin and Melanie S. Raber  
OR.107-694 3/20/2002  
OR.183-1812 9/26/2005  
OR.187-1571 3/20/2006  
5.367 ac p.19-623
- ⑲ East Holmes Industrial Park Allotment No.1  
Plat 2-224 Platted 11/14/1990
- ⑳ M.C.I. Corp.  
249-469 11/15/1990  
4.993 ac p.2-224
- ㉑ Fannie Swartzentruber, trustee  
OR.215-1887 12/18/2009  
0.008 ac p.12-689
- ㉒ East Holmes Industrial Park Allotment No.3  
Plat 13-197 Platted 7/16/1993
- ㉓ Yutz Woodworking, Ltd.  
OR.209-3045 3/27/2009  
2.0 ac total p.13-197  
Lot 28=0.844 ac, Lot 29=1.057 ac  
Lot 31=0.099 ac
- ㉔ East Holmes Industrial Park Allotment No.5  
Plat 2-329 Platted 2/15/2001
- ㉕ Timberstone Ltd.  
OR.68-1 2/20/2001  
1.903 ac p.2-329
- ㉖ Winesburg Hardwood Lumber Company, LLC  
OR.191-2765 9/21/2006  
3.64 ac p.2-329
- ㉗ David J. and Kerri J. Weaver  
OR.196-593 4/16/2007  
4.8 ac p.2-329
- ㉘ Al Yoder Estates, Ltd.  
OR.104-858 2/22/2002  
4.0 ac p.2-329
- ㉙ Timberstone Ltd.  
OR.68-1 2/20/2001  
2.57 ac p.2-329
- ㉚ Homespun Treasures of Walnut Creek, Inc.  
OR.70-674 3/27/2001  
3.38 ac p.2-329
- ㉛ Timberstone Ltd.  
OR.68-1 2/20/2001  
2.014 ac p.2-329

- ① M.C.I. Corp.  
249-469 11/15/1990  
4.993 ac p.2-224
- ② Fannie Swartzentruber, trustee  
OR.215-1887 12/18/2009  
0.008 ac p.12-689
- ③ Yutz Woodworking, Ltd.  
OR.209-3045 3/27/2009  
2.0 ac total p.13-197  
Lot 28=0.844 ac, Lot 29=1.057 ac  
Lot 31=0.099 ac
- ④ Daniel W. and Amanda M. Pfister  
259-629 4/21/1993  
84.302 ac  
150049000
- ⑤ David D. and Anna M. Troyer  
256-772 8/16/1992  
6.469 ac  
1500391000
- ⑥ Winesburg Hardwood Lumber Company, LLC  
OR.191-2765 9/21/2006  
19.115 ac total p.16-877  
Lot 16 = 0.784 ac  
Lot 29 = 18.351 ac
- ⑦ Ervin J. and Lori A. Troyer  
OR.113-78 5/16/2002  
5.0 ac total  
Lot 16 = 4.487 ac  
Lot 29 = 0.513 ac p.18-291
- ⑧ Al Yoder Estates, Ltd.  
OR.104-858 2/22/2002  
4.0 ac p.2-329
- ⑨ Timberstone Ltd.  
OR.68-1 2/20/2001  
2.57 ac p.2-329
- ⑩ Homespun Treasures of Walnut Creek, Inc.  
OR.70-674 3/27/2001  
3.38 ac p.2-329
- ⑪ Timberstone Ltd.  
OR.68-1 2/20/2001  
2.014 ac p.2-329



new survey required for next transfer

Last Revision: 12/18/2009  
**T-10, R-5, 4th. Qtr.**  
**Lots 16,17,18,27,28,29**  
**Paint Twp.**  
**Holmes County, Ohio**

**P-04**

LET IT BE KNOWN, THIS MAP HAS BEEN PREPARED AS A REFERENCE GUIDE TO PROPERTY OWNERSHIP. WE BELIEVE THIS INFORMATION TO BE CORRECT AND CURRENT; HOWEVER IT IS NOT INTENDED FOR ANY LEGAL USE, WHETHER IT BE IN SALES, TRANSFERS, TRADES, LEASES OF ANY TYPE, ETC. AND DO NOT ACCEPT RESPONSIBILITY FOR ERRORS OF ANY NATURE OR OMISSIONS CONTAINED HEREIN.