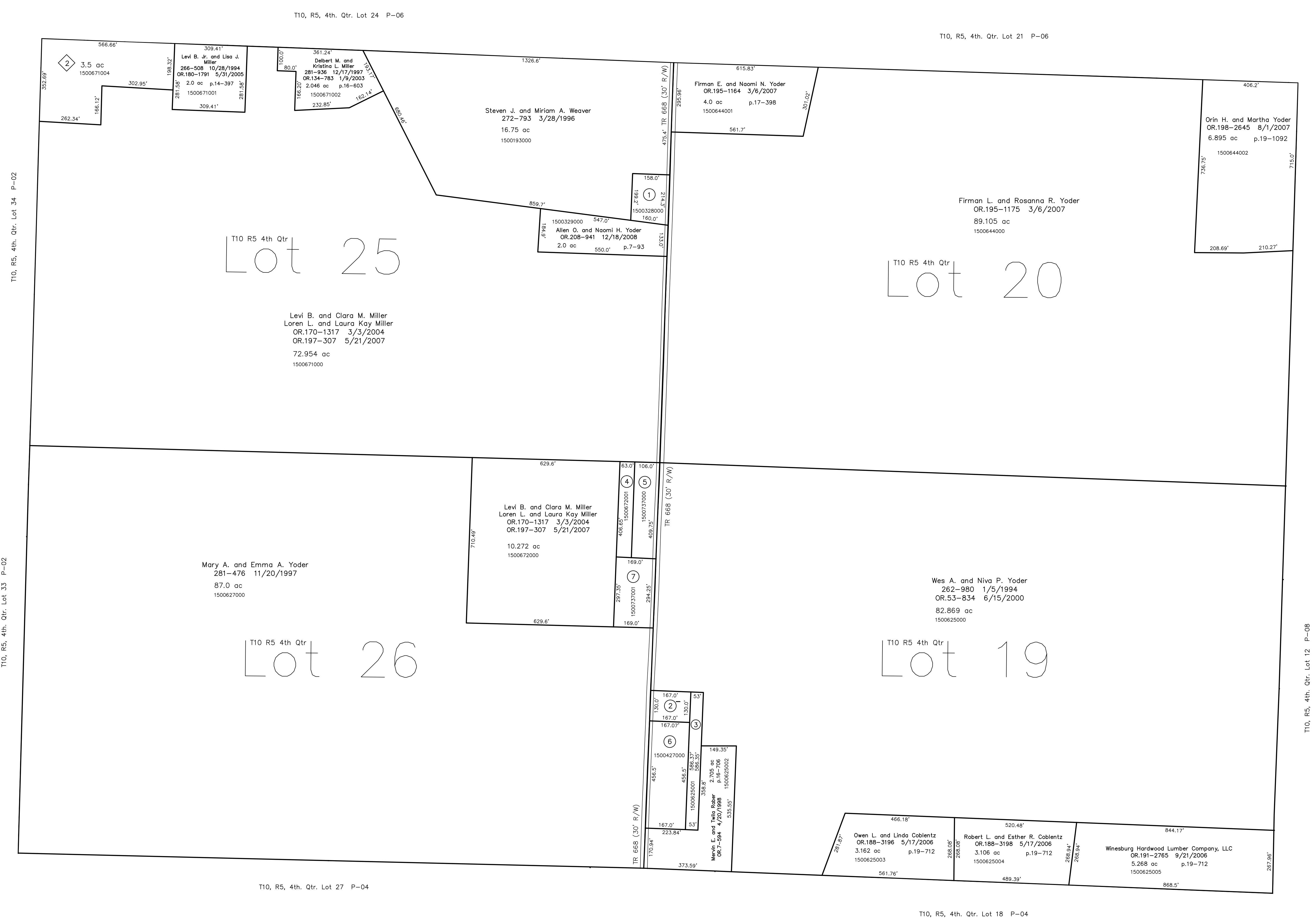
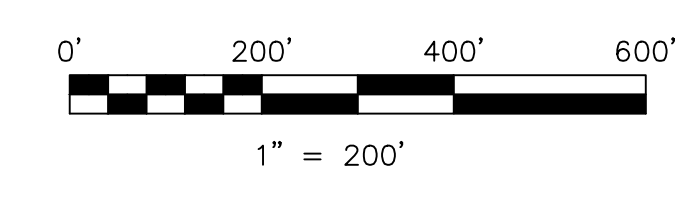


- 1500328000 (1) Allen O. and Naomi H. Yoder
OR.208-941 12/18/2008
0.75 ac p.7-93
- 1590010000 (2) American Telephone and Telegraph Company
175-151 10/8/1970
0.42 ac p.5-53
- 1500625001 (3) Mervin E. and Twila Rober
264-524 5/20/1994
0.719 ac p.14-514
- 1500672001 (4) Esta D. Fahr
OR.202-338 1/17/2008
0.588 ac p.12-749
- 1500737000 (5) Esta D. Fahr
OR.202-338 1/17/2008
0.592 ac
- 1500427000 (6) Mervin E. and Twila Rober
200-432 11/23/1977
254-522 5/20/1994
1.751 ac p.8-112
- 1500737001 (7) Nelson R. and Esther C. (Fahr) Troyer
OR.202-336 1/17/2008
OR.207-152 10/1/2008
1.148 ac p.19-1230



Miller's Wooded Acres Subdivision Replat
Plot 19-893 Platted 12/20/2006
1500671004 (8) Loren L. and Laura Kay Miller
OR.195-2149 3/19/2007
3.5 ac p.19-893



LET IT BE KNOWN, THIS MAP HAS BEEN PREPARED AS A REFERENCE GUIDE TO PROPERTY OWNERSHIP. WE BELIEVE THIS INFORMATION TO BE CORRECT AND CURRENT; HOWEVER IT IS NOT INTENDED FOR ANY LEGAL USE, WHETHER IT BE IN SALES, TRANSFERS, TRADES, LEASES OF ANY TYPE, ETC. AND DO NOT ACCEPT RESPONSIBILITY FOR ERRORS OF ANY NATURE OR OMISSIONS CONTAINED HEREIN.

new survey required for next transfer

Last Revision: 12/18/2008
T-10, R-5, 4th. Qtr.
Lots 19,20,25,26
Paint Twp.
Holmes County, Ohio

P-05

