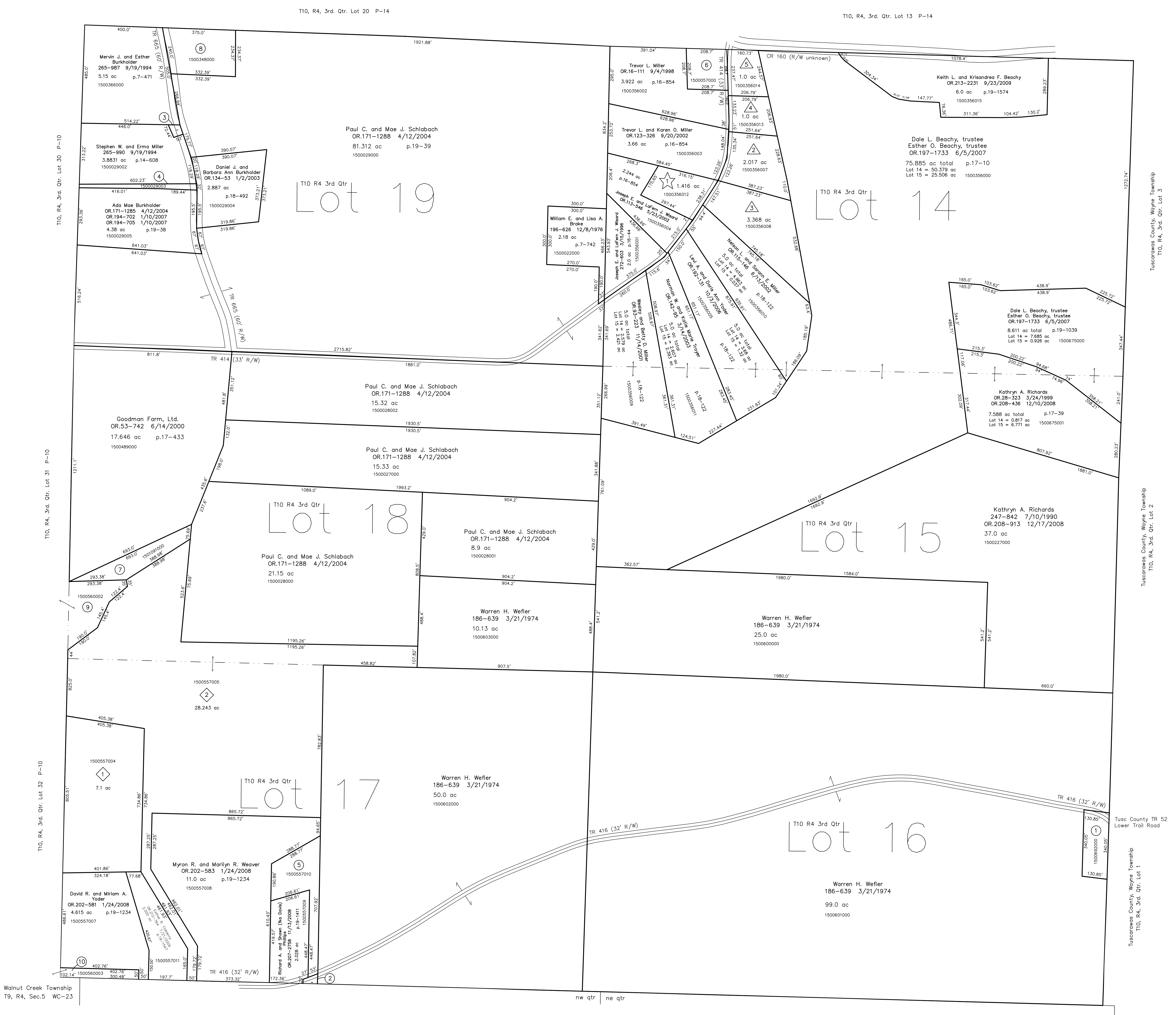


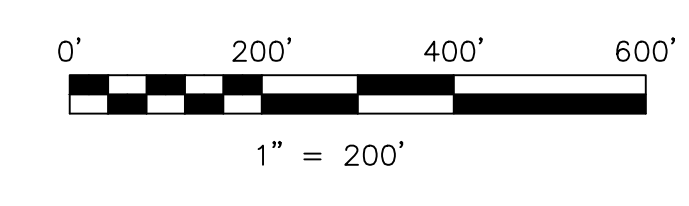
- 150062000 ① Tom E. Yoder
OR.203-1063 3/19/2008
1.0 ac
- 150057001 ② Troy E. and Linda K. Phillips
265-552 8/15/1994
0.064 ac p.14-581
- 1500029001 ③ Mervin J. and Esther Burkholder
285-987 9/19/1994
0.0799 ac p.14-607
- 1500029003 ④ Stephen W. and Erma Miller
OR.97-885 12/27/2001
0.329 ac p.18-164
- 1500557010 ⑤ Joseph J. and Naomi A. Miller
OR.207-2761 11/13/2008
1.807 ac p.19-1411
- 1500057000 ⑥ Fannie May Garber
207-140 8/29/1979
OR.16-440 9/11/1998
1.0 ac p.4-74
- 1501091000 ⑦ Goodman Farm, Ltd.
OR.53-742 6/14/2000
1.193 ac p.17-433
- 1500348000 ⑧ Robert E. and Iva Hershberger
214-856 10/15/1981
1.9 ac p.7-507
- 1500560002 ⑨ Galen L. Troyer and Galen L. Troyer, trustee
OR.204-1782 5/14/2008
1.410 ac p.2-462
- 1500560003 ⑩ David R. and Miriam A. Yoder
OR.212-762 7/21/2009
2.463 ac total p.2-462
(0.463 ac Lot 17 + 2.000 ac Lot 32)



Walnut Creek Township
T9, R4, Sec.5 WC-23

Walnut Creek Township T9, R4, Sec.4 WC-29

- ① Foggy Bottom
Plat 18-81 Platted 9/20/2001
- 1500356007 ② Willis W. and Ann E. Troyer
OR.192-1667 10/20/2006
2.017 ac p.18-81
- 1500356008 ③ Trail Construction, Inc.
OR.189-52 5/22/2006
3.368 ac p.18-81
- Foggy Bottom Subdivision Replat & Renumbering of Lot 1
Plat 19-873 Platted 11/29/2006
- 1500356013 ④ Paul E. Mast
OR.193-1818 12/8/2006
1.0 ac p.19-873
- 1500356014 ⑤ Trevor L. and Karen O. Miller
OR.212-2356 8/10/2009
1.0 ac p.19-873
- ⑥ Wisard Hills Music Subdivision
Plat 19-145 Platted 8/10/2004
- 1500356012 ⑦ Jeremy W. and Melissa S. Immel
OR.0174-2862 8/30/2004
1.416 ac p.19-145
- ⑧ Troyer Farm View Subdivision
Plat 19-1211 Platted 12/18/2007
- 1500557004 ⑨ Merlin E. Mast
OR.202-259 1/17/2008
7.1 ac p.19-1211
- 1500557005 ⑩ Merle R. and Naomi E. Beachy
OR.202-387 1/18/2008
28.243 ac p.19-1211



LET IT BE KNOWN, THIS MAP HAS BEEN PREPARED AS A REFERENCE GUIDE TO PROPERTY OWNERSHIP. WE BELIEVE THIS INFORMATION TO BE CORRECT AND CURRENT; HOWEVER IT IS NOT INTENDED FOR ANY LEGAL USE, WHETHER IT BE IN SALES, TRANSFERS, TRADES, LEASES OF ANY TYPE, ETC. AND DO NOT ACCEPT RESPONSIBILITY FOR ERRORS OF ANY NATURE OR OMISSIONS CONTAINED HEREIN.

⊙ new survey required for next transfer

Last Revision: 9/23/2009
T-10, R-4, 3rd. Qtr.
Lots 14,15,16,17,18,19
Paint Twp.
Holmes County, Ohio

P-13

Tuscarawas County, Wayne Township
T10, R4, 3rd. Qtr. Lot 3
Tuscarawas County, Wayne Township
T10, R4, 3rd. Qtr. Lot 2
Tuscarawas County, Wayne Township
T10, R4, 3rd. Qtr. Lot 1
Tus County TR 52
Lower Trail Road