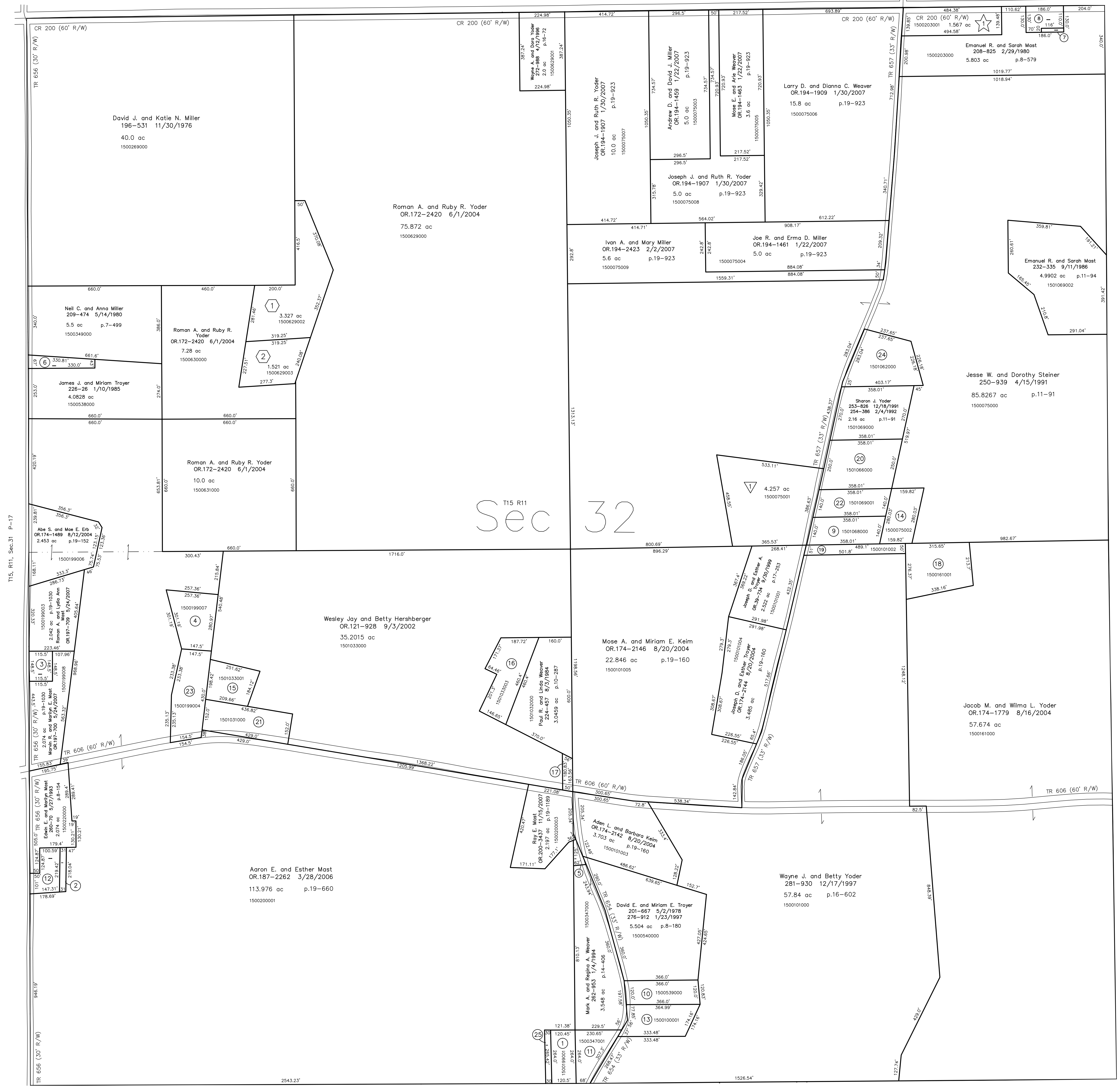


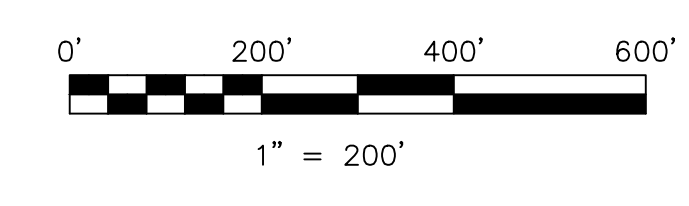
- 1500199001 ① Mark A. and Regina A. Weaver
262-953 1/4/1994
0.75 ac p.10-927
- 1500199005 ② Edwin and Marilyn Mast
OR.58-131 9/7/2000
0.157 ac p.17-626
- 1560004000 ③ Trustees of Methodist Episcopal Church
19-142 9/1/1853
0.57 ac
- 1500199007 ④ Eli A. and Mary Ann Mast
OR.197-2260 3/28/2006
1.312 ac p.19-660
- 1500347002 ⑤ Roy E. Mast
OR.200-342 11/15/2007
0.11 ac p.19-189
- 1500350000 ⑥ Neil C. and Anna Miller
211-372 11/6/1980
0.4172 ac p.8-681
- 1500125000 ⑦ Timothy I. and Gale Hershberger
203-70 8/15/1978
216-857 4/26/1982
0.06 ac p.5-521
- 1500126000 ⑧ Timothy I. and Gale Hershberger
203-70 8/15/1978
216-857 4/26/1982
0.5 ac p.4-148
- 1501068000 ⑨ Andrew S. Hamsher
OR.193-708 11/21/2006
1.12 ac p.10-474
- 1500539000 ⑩ Junior and Laura Troyer
276-760 1/9/1997
1.005 ac p.8-180
- 1500347001 ⑪ Mark A. and Regina A. Weaver
262-953 1/4/1994
0.905 ac p.10-927
- 1500199002 ⑫ Edwin E. and Marilyn Mast
276-755 1/9/1997
0.617 ac p.16-327
- 1500100001 ⑬ Junior and Laura Troyer
276-867 1/22/1997
1.215 ac p.16-335
- 1500075002 ⑭ John J. and Arie Kauffman
OR.1-187 1/2/1998
1.0 ac p.16-924
- 1501033001 ⑮ Wymen L. and Elsie Hershberger
OR.121-923 9/3/2002
1.006 ac p.18-370
- 1501033003 ⑯ Paul R. and Linda Weaver
OR.121-925 9/3/2002
1.539 ac p.18-371
- 1501033002 ⑰ Paul R. and Linda Weaver
OR.121-925 9/3/2002
0.198 ac p.18-371
- 1500161001 ⑱ Abe J. Keim
OR.174-1776 8/16/2004
1.826 ac p.19-156
- 1500101002 ⑲ Abe J. Keim
OR.174-1773 8/16/2004
0.569 ac p.19-156
- 1501066000 ⑳ Jean E. Gray Carpenter and Lloyd D. Carpenter
228-589 8/28/1985
255-655 5/26/1992
278-23 4/25/1997
2.0 ac p.10-469
- 1501031000 ㉑ Wymen L. and Elsie Hershberger
224-455 8/3/1984
1.5096 ac p.10-287
- 1501069001 ㉒ John J. and Arie Kauffman
243-208 5/8/1989
1.12 ac p.12-207
- 1500199004 ㉓ Eli A. and Mary Ann Mast
OR.58-133 9/7/2000
1.642 ac p.17-626
- 1501062000 ㉔ Mary L. Smith
228-125 7/22/1985
OR.41-872 11/8/1999
1.8614 ac p.10-447
- 1500200002 ㉕ Mark A. and Regina A. Weaver
OR.200-71 10/1/2007
0.153 ac p.19-1148



T15, R11, Sec.31 P-17

T15, R11, Sec.33 P-23

- ▽ Cozy Acres Allotment No.1
Plat 13-144 Platted 12/10/1991
- 1500075001 ▽ Wayne and Maria Wenzel
253-805 12/17/1991
4.257 ac p.13-144
- ☆ Emanuel R. and Sarah Mast Allotment No.1
Plat 15-141 Platted 9/3/1997
- 1500203001 ☆ Joe Lambright and Marie Mast
OR.199-3220 9/26/2007
1.567 ac p.15-141
- ◻ Wooded Acres Subdivision
Plat 18-454 Platted 12/3/2002
- 1500629002 ① David A. and Laura Ann Yoder
OR.198-1660 7/20/2007
3.327 ac p.16-404
- 1500629003 ② Alvin D. and Edna Yoder
OR.132-423 12/17/2002
1.521 ac p.18-454



LET IT BE KNOWN, THIS MAP HAS BEEN PREPARED AS A REFERENCE GUIDE TO PROPERTY OWNERSHIP. WE BELIEVE THIS INFORMATION TO BE CORRECT AND CURRENT; HOWEVER IT IS NOT INTENDED FOR ANY LEGAL USE, WHETHER IT BE IN SALES, TRANSFERS, TRADES, LEASES OF ANY TYPE, ETC. AND DO NOT ACCEPT RESPONSIBILITY FOR ERRORS OF ANY NATURE OR OMISSIONS CONTAINED HEREIN.

⊙ new survey required
⊙ for next transfer

Last Revision: 11/15/2007
T-15, R-11, Sec.32
Paint Twp.
Holmes County, Ohio
P-20