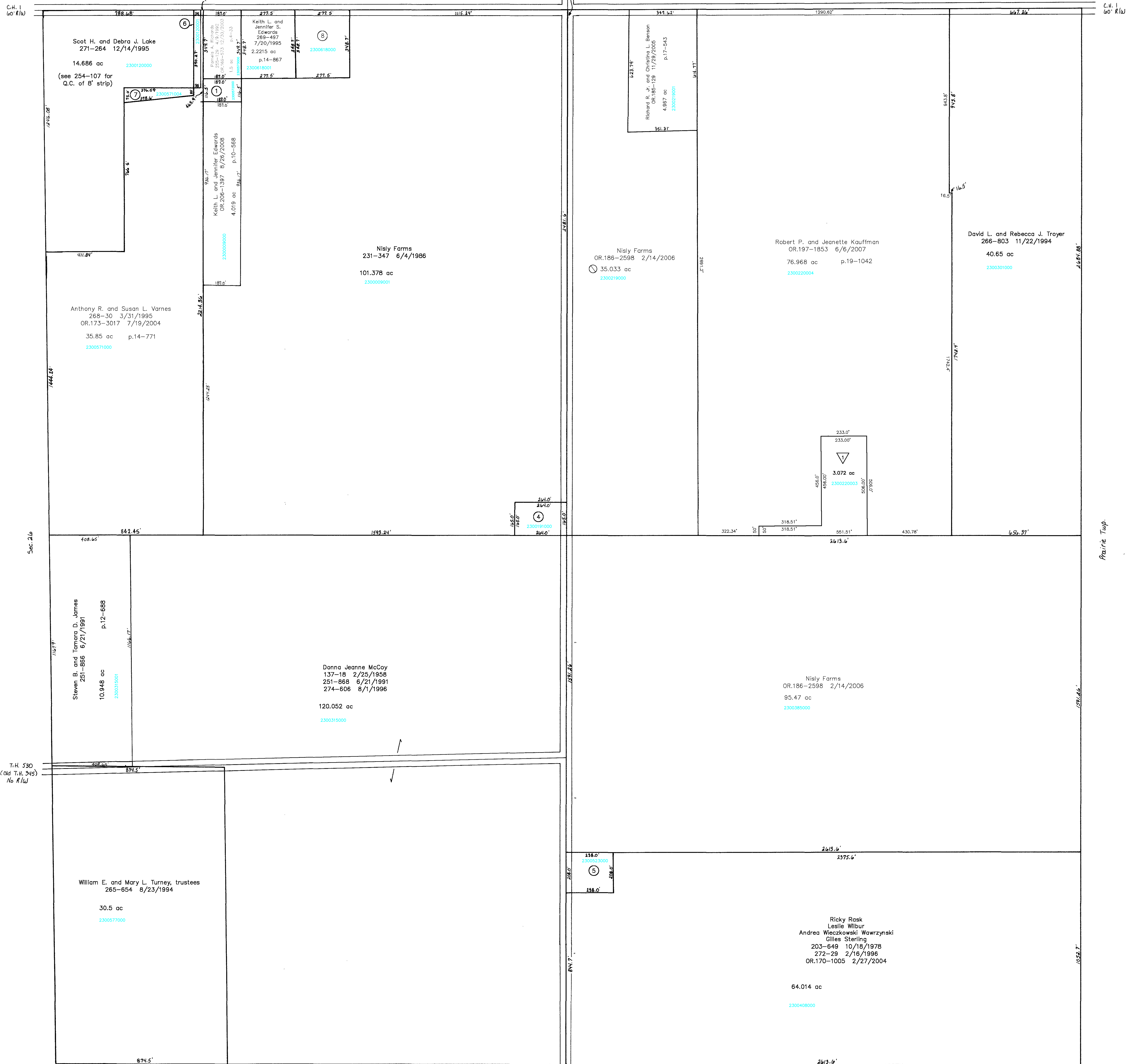


Wayne County

Wayne Co.
T.H. 75

Holmes Co. T.H. 529
(Old T.H. 340)
60' R/W



- 2300572000 ① RICHARDS PAMELA A.
255-129 4/9/1992
OR 0189-373 12/30/2003
0.5 ac p.4-202
- ② Not used
- ③ Not used
- 2300191000 ④ Nisly Farm
OR 194-1729 1/26/2007
1.0 ac
- 2300523000 ⑤ STERLING JOHN LEE JR.
201-12 1/25/1978
1.136 ac p.8-146
- 2300120001 ⑥ VARNES ANTHONY R. AND SUSAN L.
271-144 12/5/1995
OR 0133-3013 7/19/2004
0.314 ac p.14-965
- 2300571004 ⑦ LAKE SCOT H. AND DEBRA J.
271-264 12/14/1995
0.475 ac p.14-965

- 2300618000 ⑧ William C. Boss
269-495 7/20/1995
OR 207-2953 11/14/2008
OR 207-2954 11/14/2008
OR 207-3317 11/27/2008
2.2215 ac p.14-867

- ▽ Moss Creek Subdivision
Plat 2-356 Platted 2/3/2003
- 2300220003 ▽ ELVEY CARRIE R.
OR 0143-34 3/25/2003
3.072 ac

T.H. 529
Old T.H. 340
60' R/W
Sec. 36

T-18, R-14, Sec. 25
RIPLEY TWP.

SCALE: 1" = 200'

Last Revision: 11/27/2008

LET IT BE KNOWN, THIS MAP HAS BEEN PREPARED AS A REFERENCE GUIDE TO PROPERTY OWNERSHIP. WE BELIEVE THIS INFORMATION TO BE CORRECT AND CURRENT, HOWEVER, IT IS NOT INTENDED FOR ANY LEGAL USE, WHETHER IT BE IN SALES, TRANSFERS, TRADES, LEASES OF ANY TYPE, ETC., AND DO NOT ACCEPT RESPONSIBILITY FOR ERRORS OF ANY NATURE OR OMISSIONS CONTAINED HEREIN.

RI-30