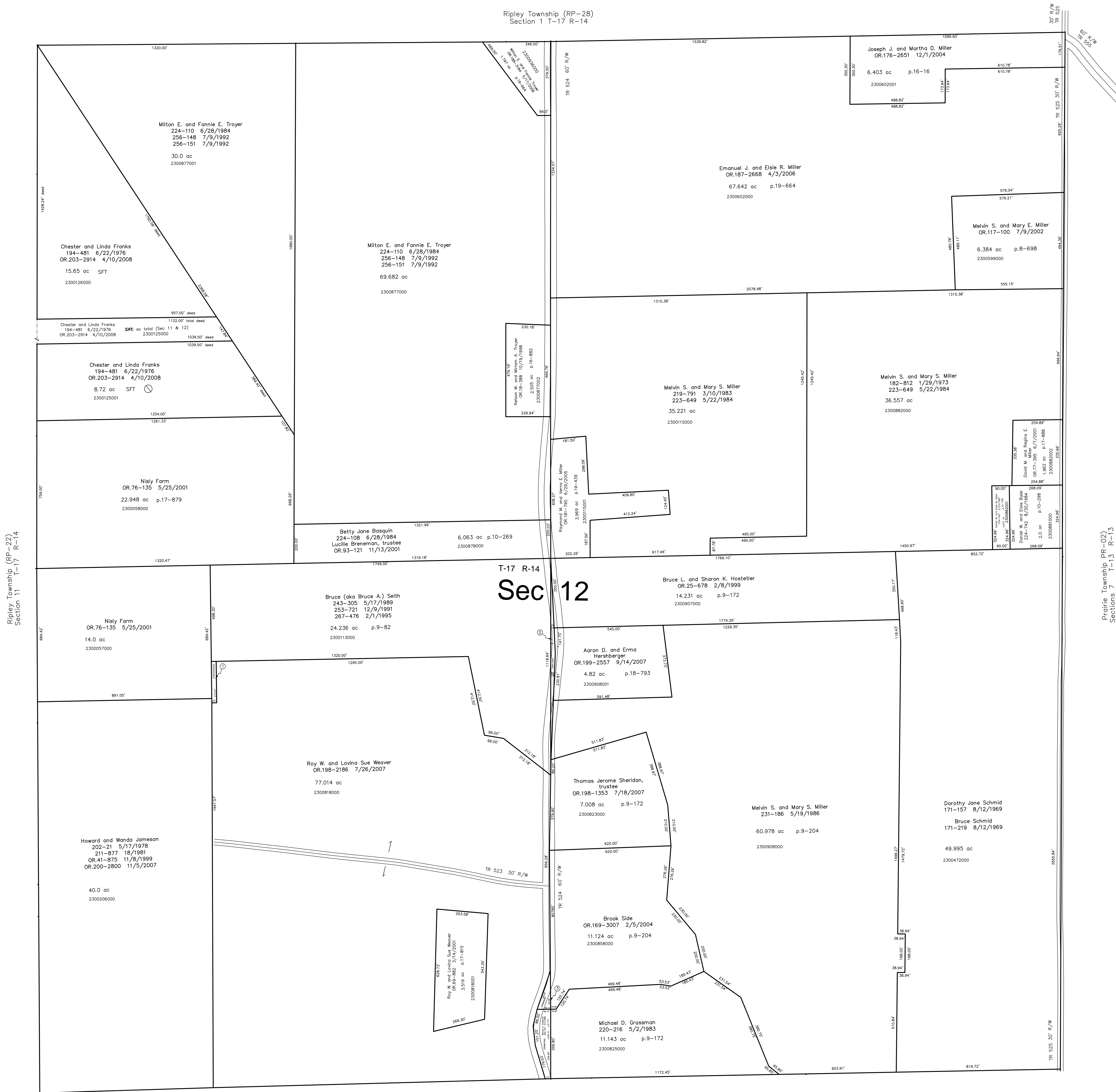


Ripley Township (RP-28)  
Section 1 T-17 R-14



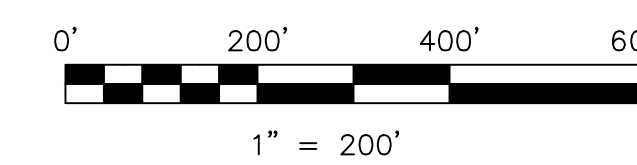
Ripley Township (RP-22)  
Section 11 T-17 R-14

Pacific Township (RP-02)  
Sections 7 T-13 R-13

T-17 R-14  
**Sec 12**

Ripley Township (RP-26)  
Section 13 T-17 R-14

- 2300205000 ① Howard (aka Howard C.) and Wanda Jameson  
202-21 5/17/1978  
211-877 1/8/1981  
OR.41-875 11/8/1999  
OR.200-2800 11/5/2007  
0.122 ac p.7-672
- 2300112000 ② Bruce (aka Bruce A.) Seith  
243-305 5/17/1989  
253-721 12/9/1991  
267-476 2/1/1995  
0.312 ac p.9-82
- 2300828000 ③ Brook Side  
OR.169-3007 2/5/2004  
0.156 ac p.9-204



S.F.T. new survey required  
for next transfer

LET IT BE KNOWN, THIS MAP HAS BEEN PREPARED AS A REFERENCE GUIDE TO PROPERTY OWNERSHIP. WE BELIEVE THIS INFORMATION TO BE CORRECT AND CURRENT, HOWEVER IT IS NOT INTENDED FOR ANY LEGAL USE, WHETHER IT BE IN SALES, TRANSFERS, TRUSTS, LEASES OF ANY TYPE, ETC., AND DO NOT ACCEPT RESPONSIBILITY FOR ERRORS OF ANY NATURE OR OMISSIONS CONTAINED HEREIN.

Last Revision: 4/10/2008

**T-17, R-14, Section 12**  
**Ripley Twp.**  
**Holmes County, Ohio**

**RP-27**