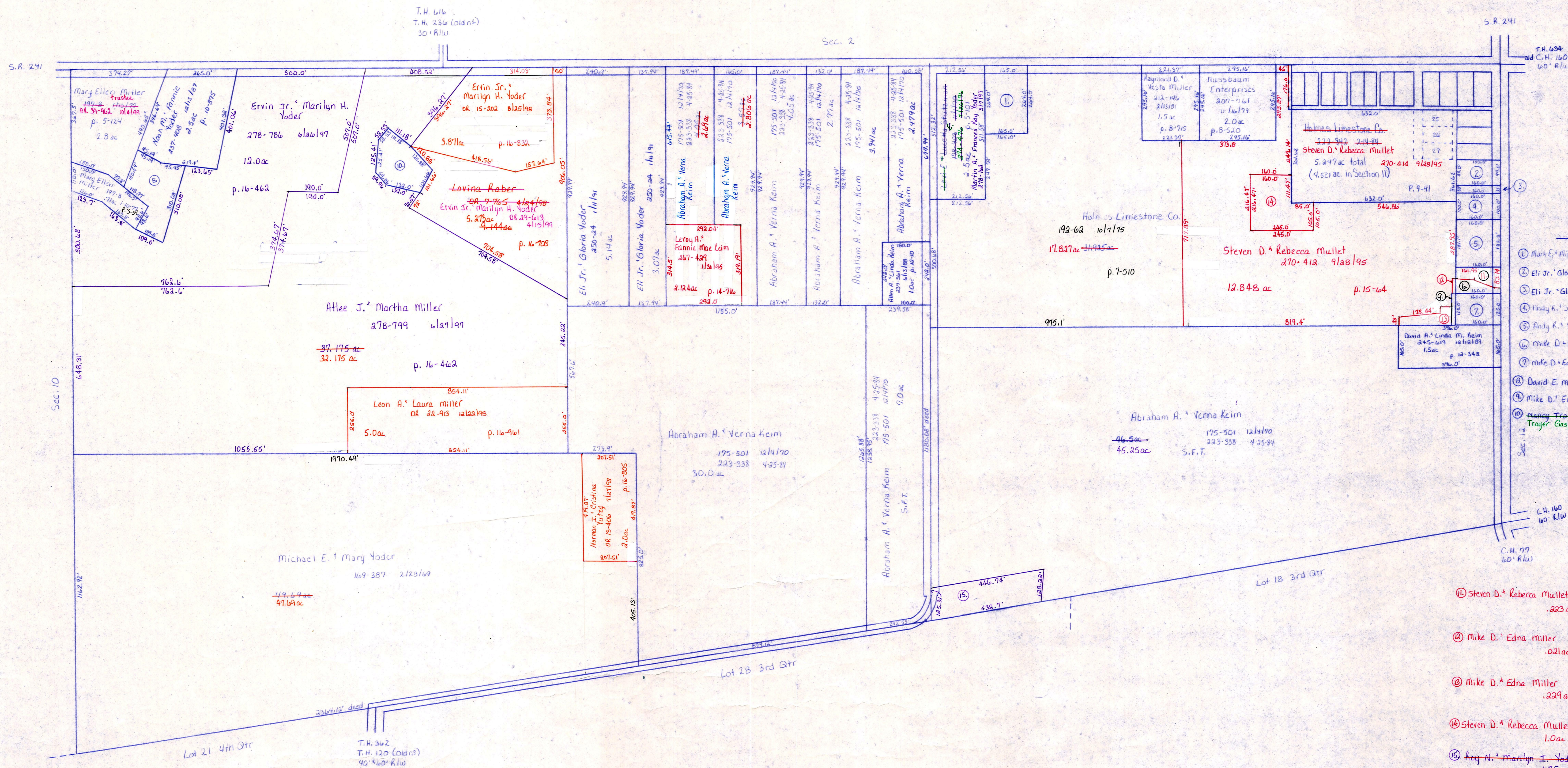


See page S-27A for Mt. Hope Village



- T-14, R-12, Sec. 11
- ① Mark E. & Miriam H. Messinger, 200-103, 414-103, 414-103, 414-103
 - ② Eli Jr. & Gloria E. Yoder, 200-315, 1012-195
 - ③ Eli Jr. & Gloria E. Yoder, 200-313, 1012-195
 - ④ Andy A. & Sara Mae Miller, 200-313, 1012-195
 - ⑤ Andy A. & Sara Mae Miller, 200-313, 1012-195
 - ⑥ Mike D. & Edna Miller, 200-313, 1012-195
 - ⑦ Mike D. & Edna Miller, 200-313, 1012-195
 - ⑧ David E. Miller, 200-313, 1012-195
 - ⑨ Mike D. & Edna Miller, 200-313, 1012-195
 - ⑩ Henry N. & Marilyn J. Yoder, 200-313, 1012-195
- ⑩ Steven D. & Rebecca Mullet, 270-412, 912-195, .223 ac, p. 14-929
- ⑪ Mike D. & Edna Miller, 270-402, 912-195, .021 ac, p. 14-929
- ⑫ Mike D. & Edna Miller, 270-402, 912-195, .229 ac, p. 14-929
- ⑬ Steven D. & Rebecca Mullet, 270-412, 912-195, 1.0 ac, p. 15-64
- ⑭ Andy N. & Marilyn J. Yoder, 200-313, 1012-195, 1.25 ac, p. 16-439, Amish Helping Fund, OR 6-499, 414-195

T-14, R-12, Sec. 11
SALT CREEK TWP.

LET IT BE KNOWN, THIS MAP HAS BEEN PREPARED AS A REFERENCE GUIDE TO PROPERTY OWNERSHIP. WE BELIEVE THIS INFORMATION TO BE CORRECT AND CURRENT, HOWEVER, IT IS NOT INTENDED FOR ANY LEGAL USE, WHETHER IT BE IN SALES, TRANSFERS, TRADES, LEASES OF ANY TYPE, ETC. AND DO NOT ACCEPT RESPONSIBILITY FOR ERRORS OF ANY NATURE OR OMISSIONS CONTAINED HEREIN.

S-27