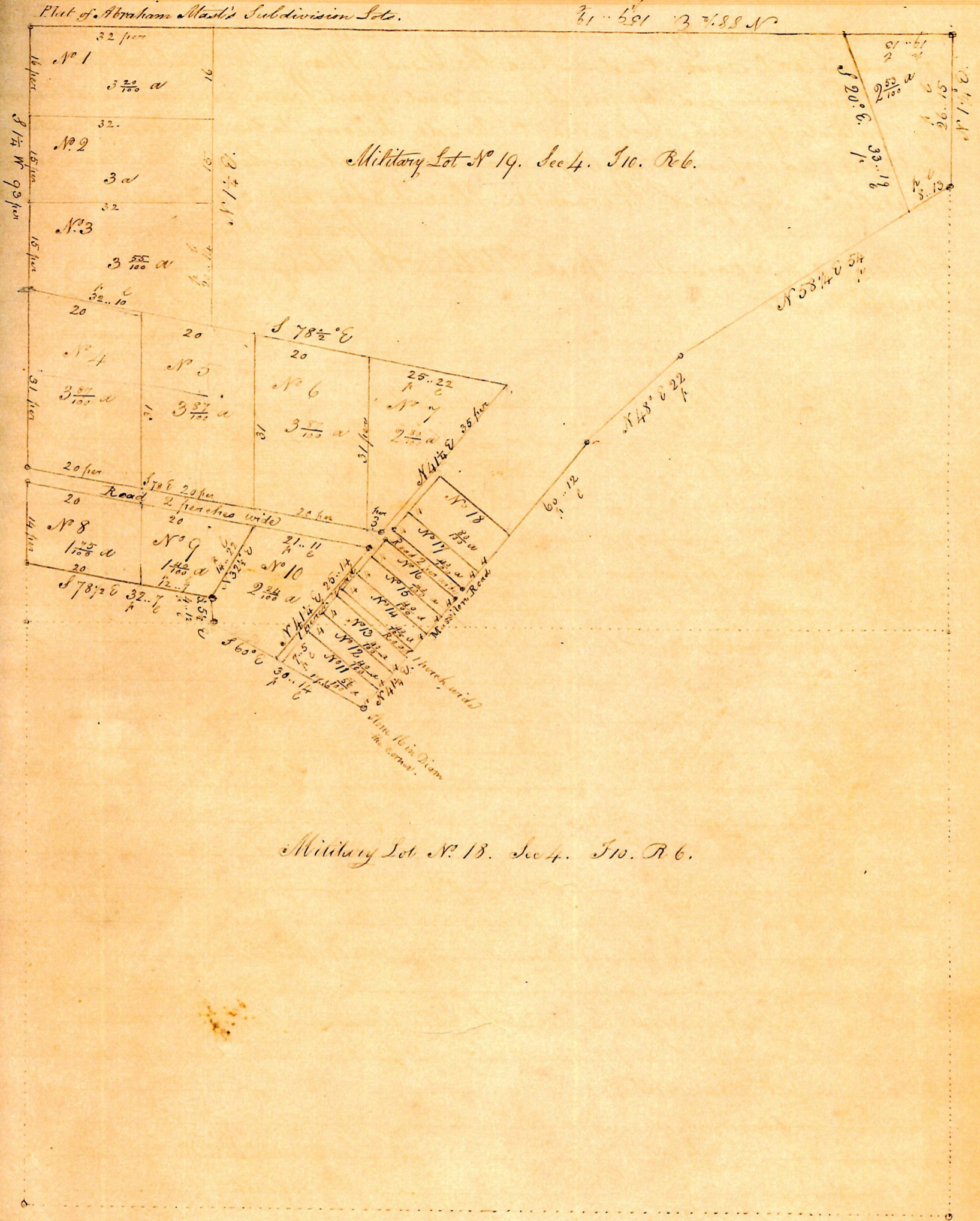


Martinsburg. Plat of Subdivision Lots.



Military Lot No. 18. Sec. 4. T10. R6.

The above Subdivision Lots belonging to Abraham Mast. <sup>No</sup> Lot 11 is situated on Military Lot No. 18 Sec. 4. T10. R6. Lots Nos. 10, 12, 13, 14 & 15 are situated on Lots No. 18 & 19. Sec. 4. T10. R6. Military. The balance of the lots are situated on Military Lot No. 19. Sec. 4. T10. R6. The roads marked on the plat are two perch wide, except the road between lots 13 & 14 which is one perch wide. The courses and distances of the lines are marked on the plat. Surveyed the above lots August 20th 1814 which are situated on Lots No. 18 & 19. Sec. 4. T10. R6. of which the above is a correct plat of the same.

Samuel Robinson, Surveyor.

Presented and recorded in this office  
April 29th A.D. 1816  
Fees 50 cts.

George F. Newton, Recorder.