



THOMAS E. FERGUSON
AUDITOR OF STATE
COLUMBUS, OHIO 43216

DEPUTY AUDITORS:

JAMES A. BOLDEN
Administration

RICHARD G. NUSS
CPA
Auditing Division

RUSSELL ROUCH
Management Advising
Service

CERTIFICATION

I, Thomas Aquinas Burke, Supervisor, Land Office of the Auditor of State, duly authorized to perform the duties of the Auditor of State prescribed in Section 115.21 of the Ohio Revised Code, hereby certifies that the enclosed field notes and plats are true copies taken from records in our office. These plats and field notes are for the following townships in the United States Military District:

1. Range 4, Townships 8, 9 and 10
2. Range 5, Townships 8, 9, and 10
3. Range 6, Townships 8, 9, and 10
4. Range 7, Townships 8, 9, and 10
5. Range 8, Townships 8 and 9
6. Range 9, Townships 8 and 9

and in the Ohio River Survey

1. Range 11, Townships 14 and 15
2. Range 12, Townships 14 and 15
3. Range 13, Townships 13 and 14
4. Range 14, Townships 17 and 18
5. Range 15, Townships 19 and 20

Witness my hand and seal of the Office of the Auditor of State, at Columbus, Ohio, this Twentieth-Nine day of November in the year of Our Lord Nineteen Hundred and Eighty-Three (1983).

Thomas Aquinas Burke
Supervisor
State Land Office



U S M D
R T
7 9

Navigable water in Township 9 Range 7th —

| Course | Distance | N | S | E | W ^o | Remarks |
|-------------|----------|---|---|---|----------------|--|
| | | | | | | Mount 2 nd 1797 from where the N boundary of T ^{ownship} crosses the West bank of Hills Creek runs upstream |
| N 5° 50' E | 3.167 | | | | | Bank 25 ths to West |
| N 0° 10' E | 2.555 | | | | | " 15 " |
| N 31° 35' W | 2.61 | | | | | " 20 " |
| N 13° 45' W | 2.167 | | | | | " " " |
| N 9° E | 2.143 | | | | | " 15 " high plain 50 ths to left |
| N 17° E | 2.09 | | | | | " " " |
| N 2° E | 3.20 | | | | | " " " |
| N 13° 30' E | 4.33 | | | | | plain trench W |
| N 49° 25' E | 2.77 | | | | | Bend to left 15 ths |
| N 46° E | 3.71 | | | | | Bank 35 ths to right |
| N 32° 50' E | 3.42 | | | | | " 10 " bend to West 40 ths in the last 100 ths |
| N 12° 15' E | 3.47 | | | | | Bank 20 ths to right bend 25- |
| N 67° 20' E | 4.110 | | | | | " 20 " bend 25 ths from 300 |
| N 30° 15' E | 1.54 | | | | | Bend to West 40 ths point 20 ths to West |
| N 02° 30' W | 2.93 | | | | | |
| N 56° W | 2.17 | | | | | Bank 20 ths to right |
| N 3.55 W | 1.93 | | | | | " " " |
| N 59° 45' E | 4.70 | | | | | Bend to West 20 ths from 2 chains point to West 40 ths |
| N 30° 15' E | 3.09 | | | | | |
| N 70° 45' W | 4.24 | | | | | |

Continued.

| Course | distance | N | S | E | W ^o | Remarks |
|-------------|----------|---|---|---|----------------|--|
| N 62° W | 3.04 | | | | | |
| N 0° W | 2.77 | | | | | low hills touch the bank a tree opposite |
| N 25 1/2° E | 3.93* | | | | | leaves N 5 1/4° E — |
| | | | | | | * hills leave the bank opposite |
| | | | | | | on the top tree of leaves S 20 1/2° E. |
| | | | | | | Bank 50 fms to right |
| S 06° E | 3.93 | | | | | |
| S 03° E | 2.63 | | | | | |
| N 32° E | 2. — | | | | | Bend to W 50 fms |
| N 02° W | 3.03 | | | | | Bank 10 fms to W |
| N 56 1/5° W | 2.06 | | | | | " 15 " |
| N 3° W | 2.34 | | | | | " " " low hills in 100 ft to left |
| N 32° E | 3.17 | | | | | " " " |
| N 9 1/10° W | 3.14 | | | | | " 20 " |
| N 3 1/10° W | 3.46 | | | | | " " " |
| N 56° E | 2.74 | | | | | " 30 " |
| N 04° E | 1.05 | | | | | mouth of a run 20 fms wide opposite |
| N 43° E | 2.65 | | | | | Bend to W 20 fms |
| N 43 1/2° W | 2.07 | | | | | " 25 " |
| N 60 1/2° W | 3.55 | | | | | Bank 20 fms to W |
| N 34 1/2° W | 3.50 | | | | | " 15 " |
| N 45° W | 2.64 | | | | | " 15 " low hills chain to left |
| N 57 3/8° E | 4.35 | | | | | " 25 " Bend to left in 1/2 2 hours |
| | | | | | | 15 fms to right in the last 30 fms |
| N 0° 15 E | 1.97 | | | | | Bend to W 30 fms |
| N 24° W | 2.05 | | | | | Bank 15 fms to W |
| N 36 3/8° W | 2.15 | | | | | Bank 20 fms to W |

Navigable Water in Township 9th Range 7th Cont

| Course | Distance | N | S | E | W | Remarks |
|-------------|----------|---|---|---|---|---|
| N 74° 45' N | 2.16 | | | | | |
| N 25° E | 3.11 | | | | | |
| N 94° 45' N | 1.46 | | | | | Bend to the N 15 th Trs |
| N 33° 30' N | 3.37 | | | | | Bank 20 th Trs to right low hills to left flat on top |
| N 2° N | 3.39 | | | | | |
| N 20° 15' E | 3.93 | | | | | |
| N 64° 45' N | 1.76 | | | | | Bend to the N 15 th Trs |
| N 46° 30' N | 3.14 | | | | | Bank 15 th Trs to the N |
| N 15° 30' N | 2.71 | | | | | " " " |
| N 66° E | 1.76 | | | | | Bend to left 15 th Trs |
| N 75° 15' E | 3.27 | | | | | |
| N 63° E | 2.03 | | | | | Bend to left 20 th Trs |
| N 7° E | 2.32 | | | | | Bank 15 th Trs to the N |
| N 12° 45' N | 3.60 | | | | | |
| N 34° 45' E | 1.56 | | | | | Bend to left 15 th Trs |
| N 69° 15' E | 3.60 | | | | | |
| N 51° 30' E | 2.52 | | | | | |
| N 31° 15' E | 3.20 | | | | | |
| N 17° 30' E | 2.12 | | | | | Bend to N 25 th Trs ground to N 15 th Trs |
| N 79° 15' N | 2.17 | | | | | Bank 15 th Trs to the N Bend to the N |
| N 56° 30' N | 2.70 | | | | | " 15 " |
| N 60° N | 2.00 | | | | | " " " |
| N 75° 50' N | 2.15 | | | | | |
| N 67° 15' N | 2.64 | | | | | " 10 " |
| N 17° 10' N | 2.80 | | | | | " 10 " |
| N 10° 45' E | 1.75 | | | | | " 15 " |

Continued

| Course | distance | N | S | E | W | Remarks |
|-------------|----------|---|---|---|---|------------------------------------|
| N 61 1/2° E | 2.06 | | | | | Bank 15 fms to right |
| S 00° 30' E | 3.70 | | | | | " " " |
| N 17° 30' E | 1.00 | | | | | Bend to right 35 fms |
| N 54° 20' W | 2.33 | | | | | Bank 20 fms to right |
| N 25° W | 3.30 | | | | | |
| N 15° 10' E | 5.04 | | | | | |
| N 9° E | 3.63 | | | | | |
| N 30° 15' W | 1.67 | | | | | Point 15 fms to W Bend to W 20 fms |
| S 55° 15' W | 3.30 | | | | | Bank 12 fms to right |
| S 71° W | 1.75 | | | | | " 20 " |
| N 70° 30' W | 2.24 | | | | | " 15 " |
| N 30° 15' W | 2.29 | | | | | " 22 " |
| N 5° 15' E | 2.10 | | | | | " 10 " |
| N 27° E | 4.00 | | | | | " 20 " |
| N 10° 15' E | 2.73 | | | | | Bend to W 40 fms |
| N 27° 15' E | 2.94 | | | | | |
| N 79° 20' W | 4.07 | | | | | Bank 15 fms to W |
| N 74° 30' W | 4.21 | | | | | |
| N 60° 30' W | 3.00 | | | | | |
| N 34° 30' W | 2.44 | | | | | Bank 15 fms to W |
| N 26° 30' E | 2.19 | | | | | at 106 fms a small run |
| N 67° E | 3.27 | | | | | Bend to W 25 fms |
| N 13° 15' W | 1.26 | | | | | " " 10 " |
| N 74° 15' W | 2.50 | | | | | |
| N 57° 45' W | 1.91 | | | | | Bank 15 fms to W |
| N 6° 45' E | 2.92 | | | | | |
| N 10° 30' E | 3.37 | | | | | |

0
 Navigable water in Township 9th Range 7th cont.

| course | distance | N | S | E | W | remarks |
|------------|----------------------|---|---|---|---|---|
| N 53° E | 2, 26 ^{ths} | | | | | a number of little Islands of drift wood wed in the bank the opposite bears S 72° E |
| N 71° 45 E | 1, 52 | | | | | last the bears S 50° 40 E - |
| N 31° 15 E | 2, 46 | | | | | at 126 ^{ths} a run 15 ^{ths} wide from the mouth of a Bend to Pt 25 ^{ths} - |
| N 3° 30 E | 3, 71 | | | | | |
| N 57° E | 2, 39 | | | | | |
| N 05° E | 2, 22 | | | | | Bank 15 ^{ths} to Pt - |
| N 44° 15 E | 2, 39 | | | | | Not 2 nd N 79° 7 th of said for the day |
| N 30° 40 E | 2, 26 | | | | | |
| N 12° 40 E | 3, 07 | | | | | Bend to Pt 45 ^{ths} in last 2 ^{ds} |
| N 32° 15 E | 2, 57 | | | | | " " 15 " |
| N 22° 10 E | 2, 69 | | | | | Bank 20 ^{ths} to Pt - |
| N 36° 20 E | 2, 67 | | | | | |
| N 2° N | 2, 25 | | | | | |
| N 22° N | 2, 59 | | | | | |
| N 49° 30 N | 2, 91 | | | | | Bank 15 ^{ths} to Pt low hills within two chains opp ^t |
| N 10° 40 N | 3, 19 | | | | | |
| N 20° 20 N | 3, 40 | | | | | |
| N 10° 45 N | 2, 06 | | | | | Bank 20 ^{ths} to Pt - |
| N 2° 20 E | 4, 30 | | | | | " " " |
| N 11° N | 2, 09 | | | | | low hills touch the Creek opp ^t |

Continued

| Course | Distance | N | S | E | W | Remarks |
|------------------------|----------|---|---|---|---|---|
| N 37 ⁵ 50 W | 3.10 | | | | | |
| N 19 ⁰ W | 3.33 | | | | | Bank 15 to left |
| N 37 ⁰ W | 2.05 | | | | | Bend to right 15 fms in land 150 fms |
| N 10 ⁰ 10 W | 2.40 | | | | | |
| N 11 ⁰ E | 2.50 | | | | | |
| N 24 ⁰ 25 E | 3.17 | | | | | Bend to left 15 fms |
| N 16 ⁰ W | 2.72 | | | | | Bank 20 fms to left |
| N 30 ⁰ W | 3.39 | | | | | Bank 20 fms " |
| N 5 ⁰ W | 2.50 | | | | | the opposite bears N 52 ⁰ 30 E |
| N 11 ⁰ E | 4.63 | | | | | the bears N 19 ⁰ 45 E |
| N 27 ⁰ W | 1.06 | | | | | Bank 10 fms to left |
| N 55 ⁰ 45 W | 3.70 | | | | | |
| N 30 ⁰ 35 W | 3.00 | | | | | " 20 " |
| N 0 ⁰ 30 W | 3.42 | | | | | " 15 " |
| N 0 ⁰ 50 E | 3.01 | | | | | " " " few hills opposite |
| N 10 ⁰ 50 E | 2.50 | | | | | " " " |
| N 23 ⁰ E | 3.32 | | | | | " " " |
| N 36 ⁰ 45 E | 2.00 | | | | | |
| N 15 ⁰ 50 W | 1.43 | | | | | Bend to the right 25 fms |
| N 64 ⁰ 50 W | 1.40 | | | | | |
| N 32 ⁰ W | 3.32 | | | | | |
| S 52 ⁰ 15 W | 2.37 | | | | | Bank 15 fms to left |
| N 64 ⁰ 20 W | 2.34 | | | | | " 20 " |
| N 0 ⁰ 15 W | 1.75 | | | | | |
| N 37 ⁰ 50 E | 3.70 | | | | | Bend to left 20 fms |
| N 20 ⁰ W | 1.20 | | | | | " " 25 " |
| N 65 ⁰ 15 W | 3.10 | | | | | Bank 15 fms to left |
| N 52 ⁰ 15 W | 2 | | | | | |
| N 23 ⁰ 10 W | 1.76 | | | | | |

Navigable stream in Township 9th Range 7th cont.

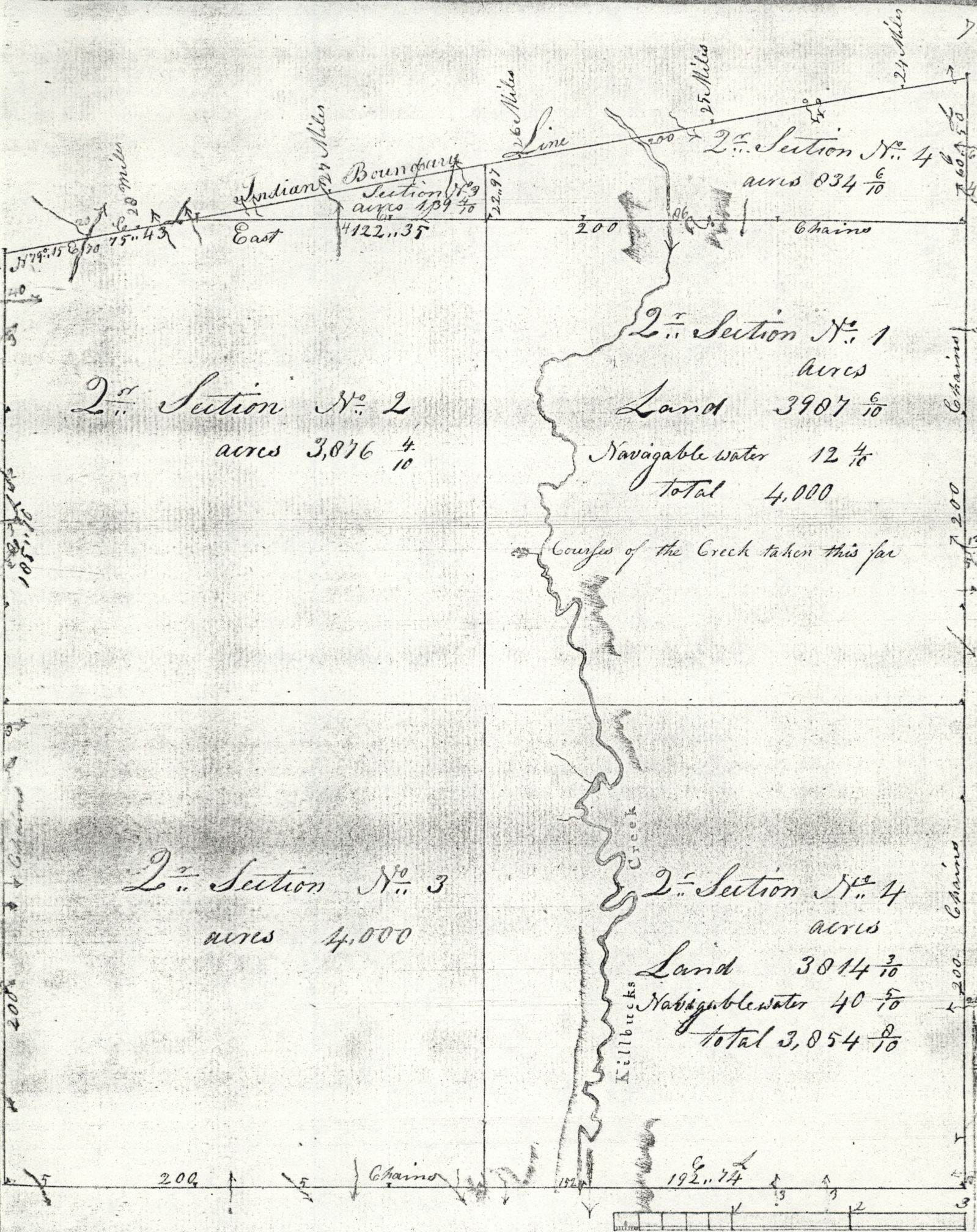
| Course | Distance | N | S | E | W | Remarks |
|-----------|----------|---|---|---|---|---|
| N 11 45 E | 2.26 | | | | | |
| N 31 45 E | 1.50 | | | | | |
| N 35 30 W | 1.40 | | | | | |
| N 35 00 W | 1.63 | | | | | |
| N 17 15 E | 2.05 | | | | | Bend to Rt 15 th |
| N 52 00 W | 2.24 | | | | | " " 15 " |
| N 67 00 W | 2.96 | | | | | " " " |
| N 14 00 W | 2.55 | | | | | |
| N 30 30 E | 2.47 | | | | | To a Syamou here we left taking the meander of |

Pillbuck's Creek the Syamou is heard and marked thus
 Cas for N 3 00 W 1796 I M heard a number of trees - a white
 black Walnut bottom to the left - the creek loses its width
 considerably through this township but still appears
 navigable if clear of logs and the water a little higher

Width of the Creek in Sundry places
 South boundary ~ ~ ~ 152
 1st distance across ~ ~ ~ 150
 2nd do ~ ~ ~ 150

divided by 3) 452
 gives ~ ~ ~ 150 2/3
 say for the average width ~ ~ ~ 150th ~ ~ ~

Nov ~ 9th 1797
 By J^{no} Matthews



TOWNSHIP N^o IX and X RANGE N^o VII SCALE of Fifty Chains to an Inch