



THOMAS E. FERGUSON
AUDITOR OF STATE
COLUMBUS, OHIO 43216

DEPUTY AUDITORS:

JAMES A. BOLDEN
Administration

RICHARD G. NUSS
CPA
Auditing Division

RUSSELL ROUCH
Management Advising
Service

CERTIFICATION

I, Thomas Aquinas Burke, Supervisor, Land Office of the Auditor of State, duly authorized to perform the duties of the Auditor of State prescribed in Section 115.21 of the Ohio Revised Code, hereby certifies that the enclosed field notes and plats are true copies taken from records in our office. These plats and field notes are for the following townships in the United States Military District:

1. Range 4, Townships 8, 9 and 10
2. Range 5, Townships 8, 9, and 10
3. Range 6, Townships 8, 9, and 10
4. Range 7, Townships 8, 9, and 10
5. Range 8, Townships 8 and 9
6. Range 9, Townships 8 and 9

and in the Ohio River Survey

1. Range 11, Townships 14 and 15
2. Range 12, Townships 14 and 15
3. Range 13, Townships 13 and 14
4. Range 14, Townships 17 and 18
5. Range 15, Townships 19 and 20

Witness my hand and seal of the Office of the Auditor of State, at Columbus, Ohio, this Twentieth-Nine day of November in the year of Our Lord Ninteen Hundred and Eighty-Three (1983).

Thomas Aquinas Burke
Supervisor
State Land Office



*Heading says
Range 10
these were
clipped to
Range 9 as
received
from
the
state*

U S M D
R 1
9 9

East boundary of Township 9th Range 10th a portion

Sept 20th 1797 - from the Northeast corner of Town 5th
 North Range 10th run North —
 1st Mile North

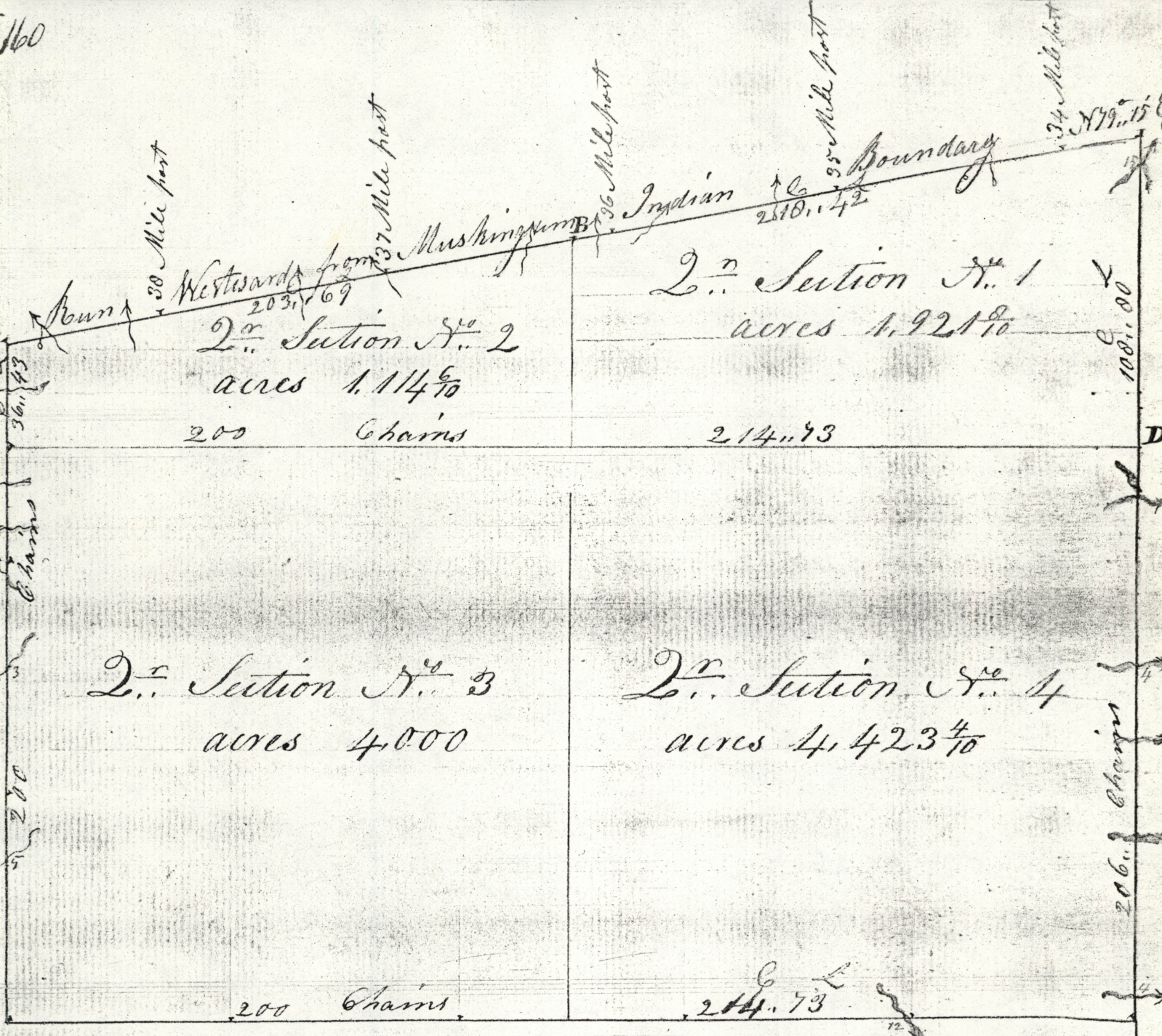
6th 13, 14 a black Oak 18 inches diameter in the line
 30, 00 quit for the day — Sept 28th 1797
 31, 36 a white Oak 11 inches diameter in the line
 45, 44 a run 5ths wide from N 20° E to S 20° W —
 62, 13 a white Oak 20 inches diameter in the line
 74, 22 a black Oak 20 inches —
 00, 00 put a dogwood post where a black Oak 17 inches diameter
 bears N 70° 15' E 17ths and one other black Oak 16 inches diameter
 bears N 55° W 29ths Mill high and steep soil but in
 in general stony in places timber White Oak & black
 Oak —

2nd Mile North

13, 03 a White Oak 20 inches diameter in the line
 20, 94 a black Oak 20 do —
 44, 54 a run 3ths wide from N E to S W —
 53, 95 a white Oak 18 inches diameter
 75, 16 gully from S E to N W dry —
 00, 00 put a white Oak post where a black Oak 8 inches diameter
 bears N 29 45 E 14ths and a black Oak 16 inches diameter
 N 70° W 40ths land of the same description as the last
 mile —

East boundary of Township 9th Range 10th cont.

North	3 rd Mile North
6 th 11.50	a gully from E to W dry
10.70	Black Oak 6 inches diameter in the line
20.25	a gully from E to W dry
36.11	an Hickory 13 inches diameter
30.41	Black Oak 23 inches diameter
40	put a dogwood post corner to sections 19, 20, 21, 22, 23, 24, 25, 26, 27, 28, 29, 30, 31, 32, 33, 34, 35, 36, 37, 38, 39, 40 and of sections 2 & 3 of T ₉ R ₁₀ where a white Oak 13 inches diameter bears N 25° E 65 ft this and a White Oak 20 inches diameter bears S 51° E 25 ft this marked and numbered by the place and numbered the other sections.
60.05	a gully from E to W
67.40	a White Oak 12 inches diameter
76.43	to Ludlow's line put a bush post where a white Oak 9 inches diameter bears S 70° 30' W marked N 10° 30' E and a black Oak 10 inches diameter bears S 40° 30' E 34 ft this marked N 10° 30' E 34 ft this runs over high steep barren points between gullies running into White woman's Creek.



Township IXth
 Range IXth

Scale of fifty chains to an Inch