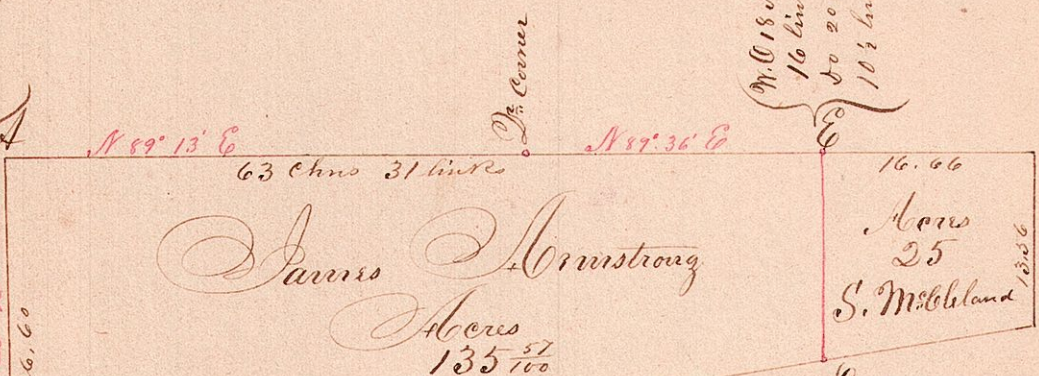


Section 23 (Fractional) Twp 17 Range 14

W. Cor 20 S 55° 35' W  
25.55

N. Cor 18 N 56° W  
16 links  
to 20 N 37° E  
10 1/2 links



Original Gum Stand-  
ing (green)

Markle 12 Corner  
McBlainland Sol

W. Cor 15 S 34° W 24  
to 10 N 47° W 41

Surveyed the above for James Armstrong  
December 12<sup>th</sup> 1851  
Jackson Silcott (C. S. 76. 60)