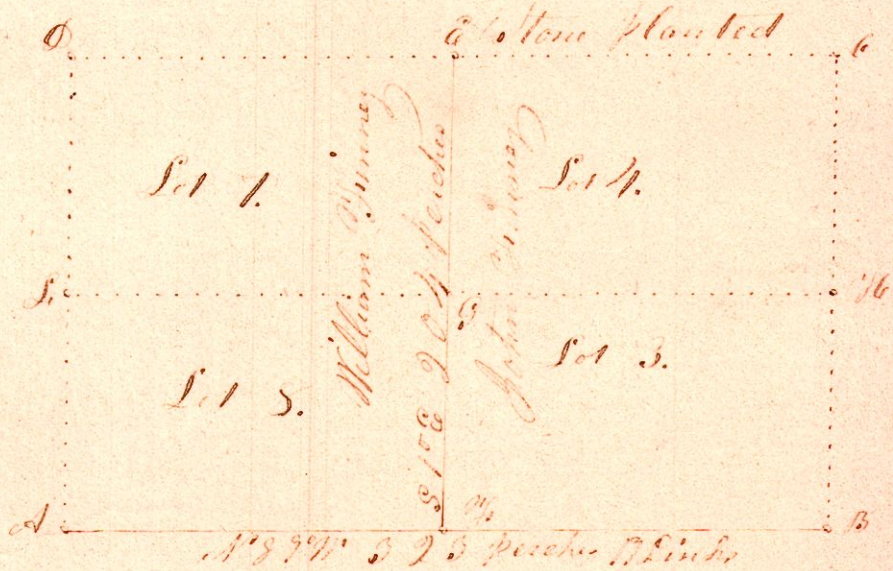


Holmes County, Ohio  
Section 9 in Township 7  
of Range 8 in Prairie 141<sup>st</sup>

(2.)



Surveyed the above for William Winney  
August the 26<sup>th</sup> 1854  
Being the line between sections north  
and south between lots 2 and 4 and  
7 and 8. The original ~~boundaries~~<sup>survey traces</sup> at C and D  
could not be found Stone planted at D  
A ~~which~~ is S. 42<sup>nd</sup> W. 19 Links. S. J. Courby C. E. D. C.