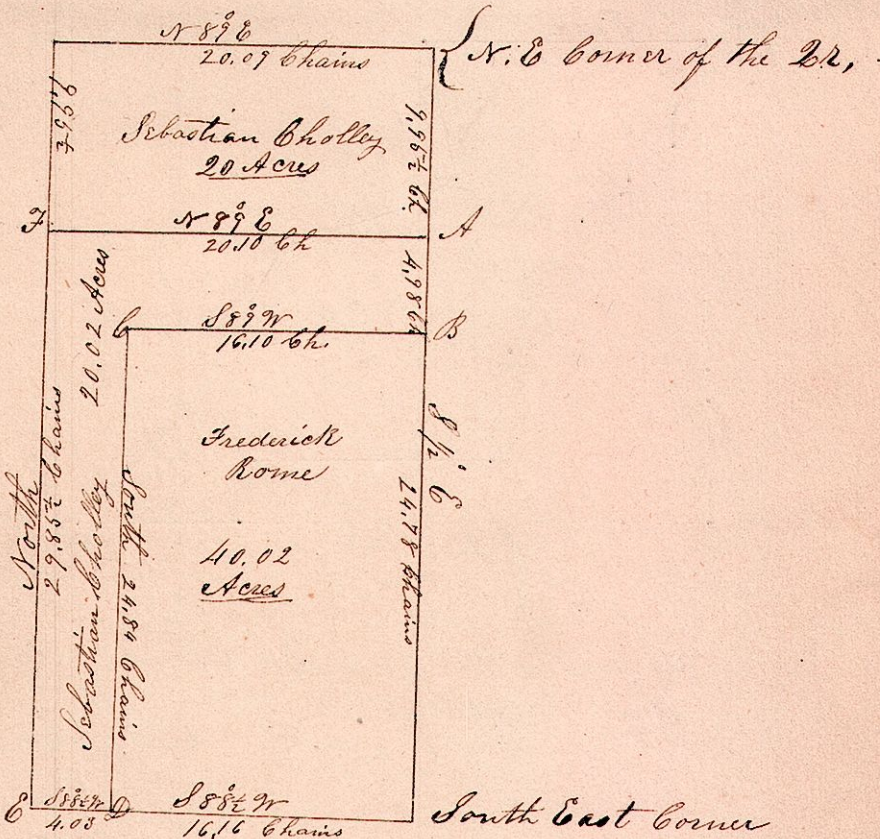


East half of the N. W. qr. of Sect. 36, Tp. 15 Range 12



Bearing Trees

At C. Oak 14 S 62° W 50 links
 " " W. Oak 24 N 32° W 21 "

at D. Elm 14 S 47° W 58 links
 " " W. Oak 24 N 17° E 47 "

Surveyed the above described land Nov 15, 1860

Jas. L. Richardson Co. Surveyor