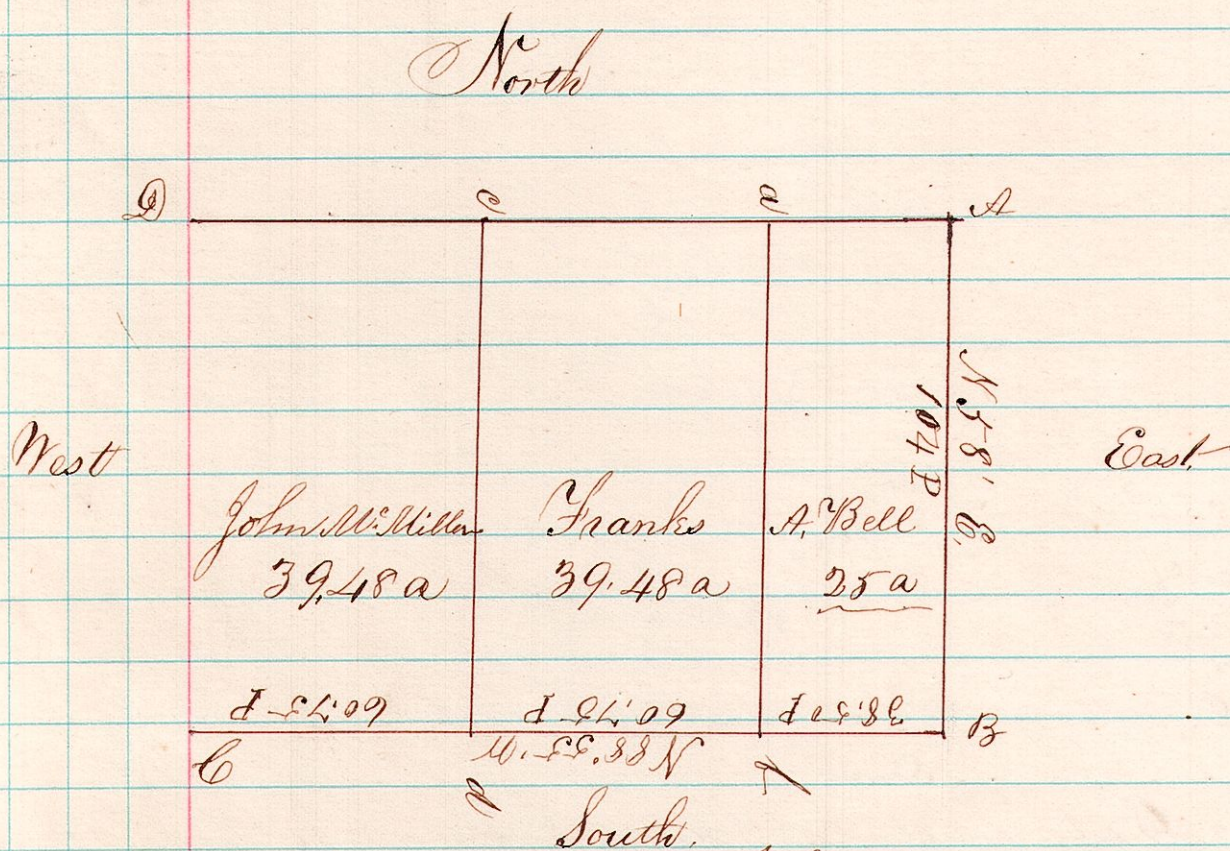


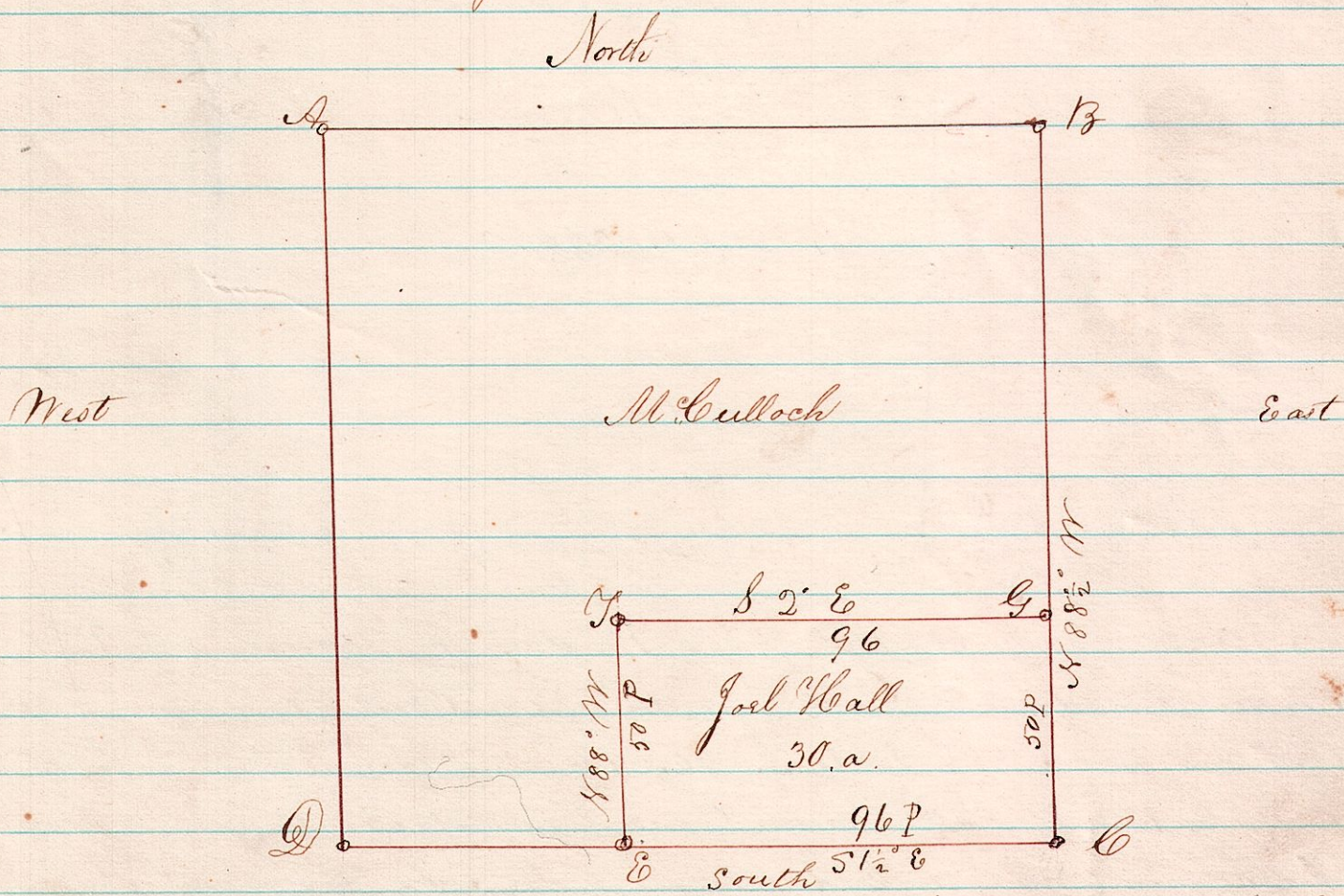
Township No 9 Range 9. Lot No 4 Military. Knox Jr. 4



A Survey made for John W. Miller and others to divide Lot No 4 R 9 Military, as follows, A. Bell, 25 acres off the East end of said lot, and the balance equally divided between Franks and John W. Miller, as the above plat represents the corners were all established by putting in stakes where there were none, Original bearing trees not all to be found, This 14<sup>th</sup> day of February 1871

Joshua Spongle C. Surveyor

Township 9 Range 6 Section 6, South part of N.W. quarter



A Survey made on 11<sup>th</sup> day of January 1871 for Joel Hall of which all the corners were good no timber for bearing trees the corners were established by by stakes being drove in the survey commenced at the S. E. C and run as per plat.

Joshua Spongle. (County Surveyor)