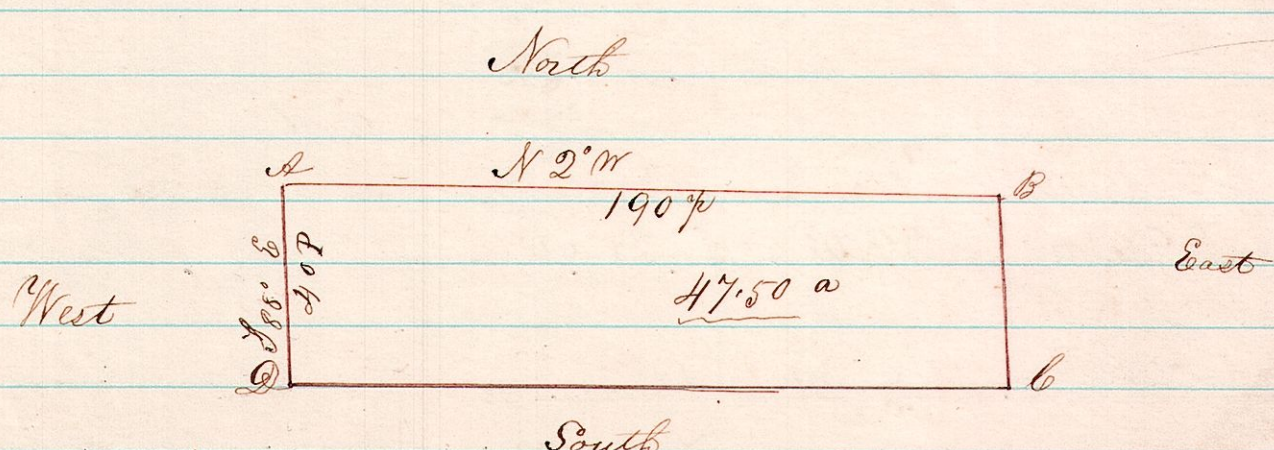
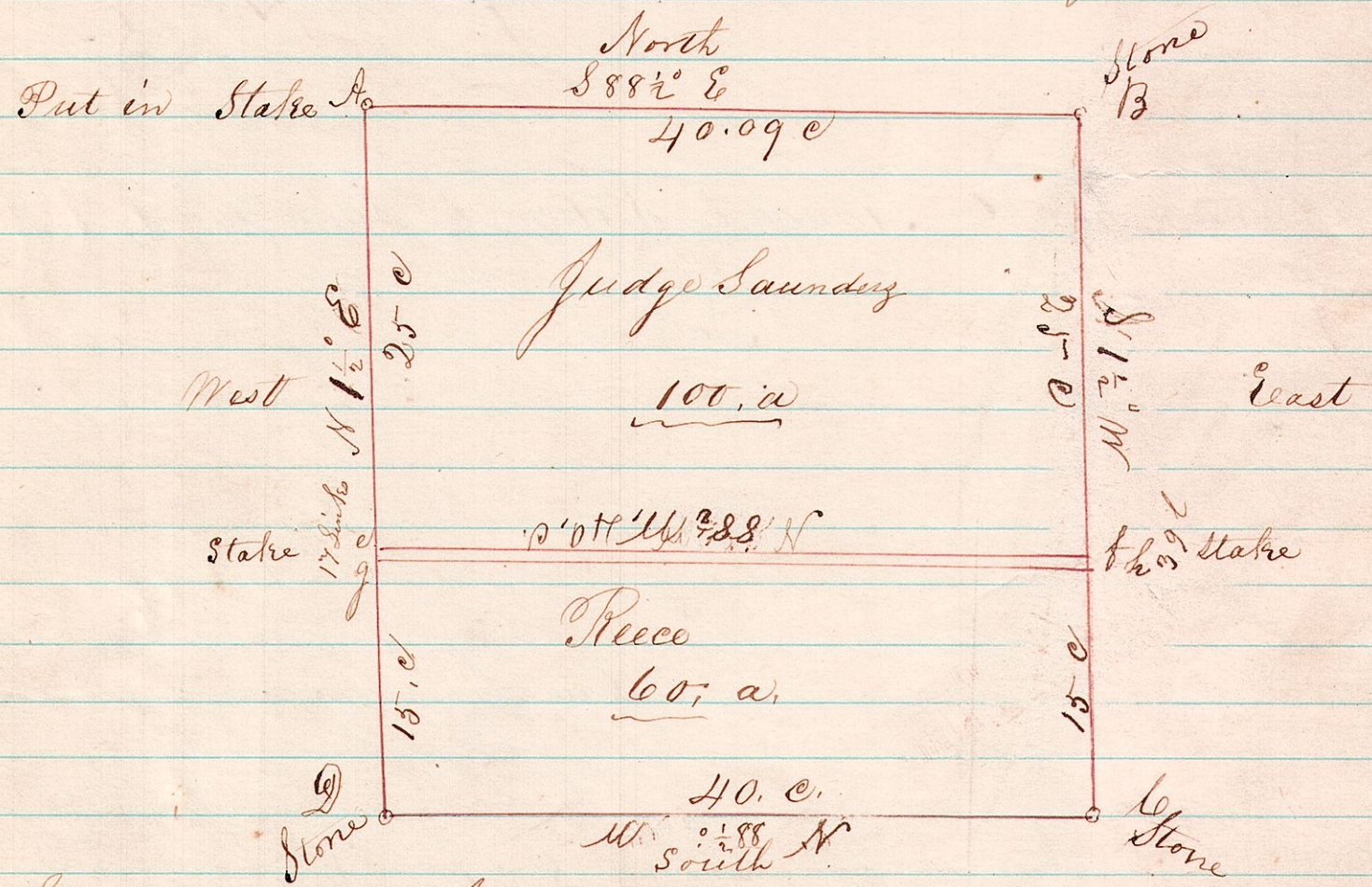


5 8 21 SW S.W. quarter of Section 21 Township 8 Range 5 - Also part of NW quarter Section 21 Township 8 Range 5 - Military



A Survey made for Jacob Deetz on the 25th day of November 1870 the corners were made good by putting stakes where there were no stones in this is taking 47.5 acres off the south side of the above named quarter of Sec 21
 Joshua Spono (C. Surveyor)

Lot No. 24 Township 9 Range 7.



A Survey made on the 3rd & 4th days of January A.D. 1871, for Judge Saunders, Shattuck & Day, by order of the Court of Common Pleas commencing at A running S 88 1/2° E to B. 40.09 chains from B to C N 1 1/2° W 25 chains from C to D N 88 1/2° W 40 chains thence from D to A S 1 1/2° E to the place of beginning containing one hundred acres Judge Saunders part; Also 60 acres on the south side as per plat; also a small piece between said two pieces 17 links at the west end and 39 links at East end containing 1 1/4 acres
 Joshua Spono (C. Surveyor)
 John Brinkerhoff (Private Surveyor)