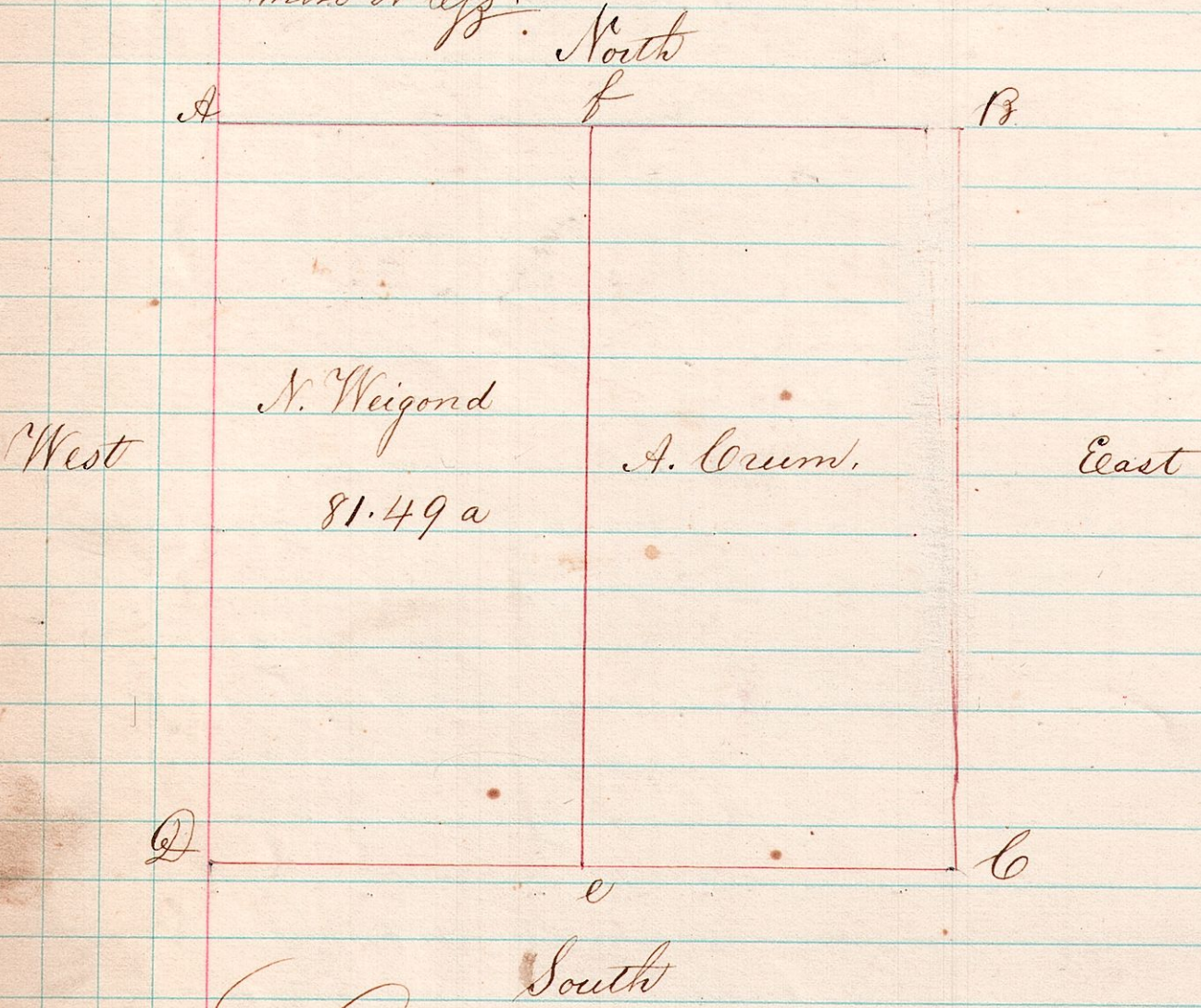
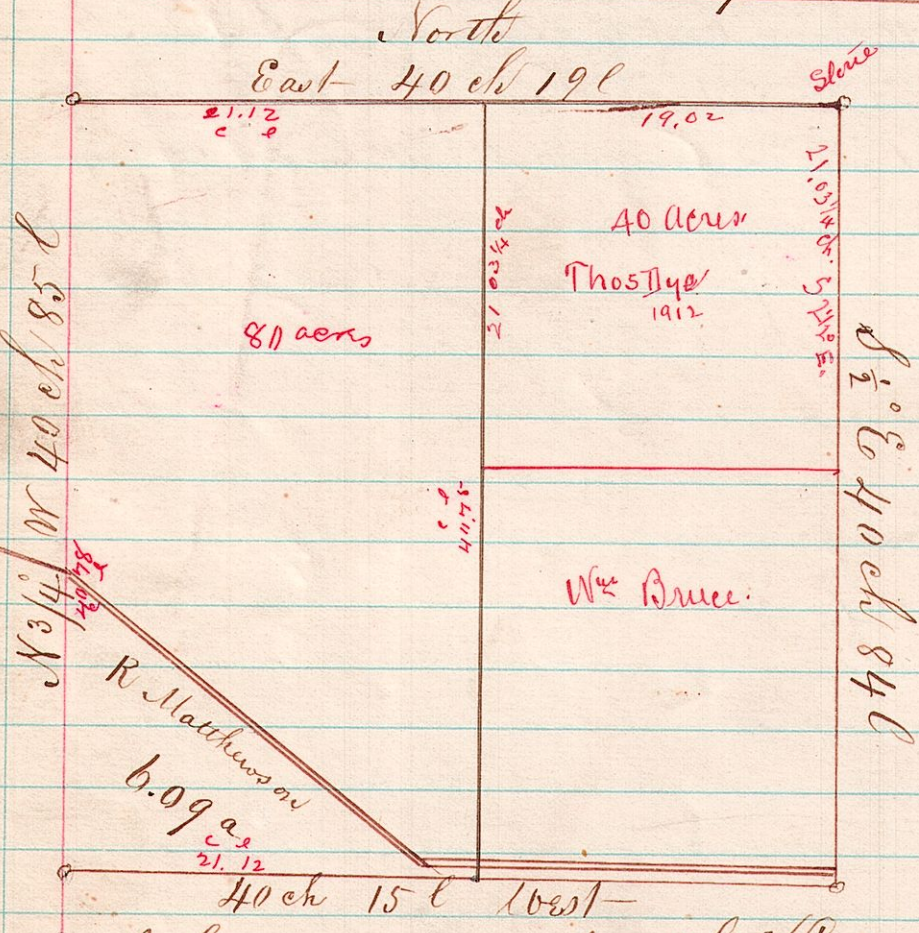


# Section 11. Township 13 Range 8

A Survey made for Weigond The East part of the North East quarter of Section 11 Township 13 Range 8 Commencing at the South East corner N 1 1/2° W 40 chains and 68 links, N 88 1/2° W. 20 chains and 34 links, thence S 1 1/2° E 40 chains and 68 links, thence S 88 1/2° E 20 chains and 34 links containing 81.49 acres more or less.



# Section 35 Township 18 Range 14.



Surveyed 40 acres off of N.E. corner Nov 8, 1912. For Thomas Dye and Wm Bruce

*N.L. Reiduback*  
County Surveyor

Surveyed 80 acres off the West end of this section for J. N. Lightcap April 22, 1874  
*J. C. Calhoun*  
County Surveyor

A Survey made for Joseph Kimerer on the 7<sup>th</sup> day of February 1872 Section 35 Township 18 Range 14. South West quarter commencing at the S.E. c. thence West 40 chains 15 links, thence N 3/4° W 40 chains 85 links thence East 40 chains 19 links, thence S 1/2° E 40 chains 84 links to the place of beginning containing 164.07 acres less 6.09 acres in the S.W. corner of said quarter which was deeded to Robert Matthews The above is a correct plat

*Joshua Sprongle* County Surveyor