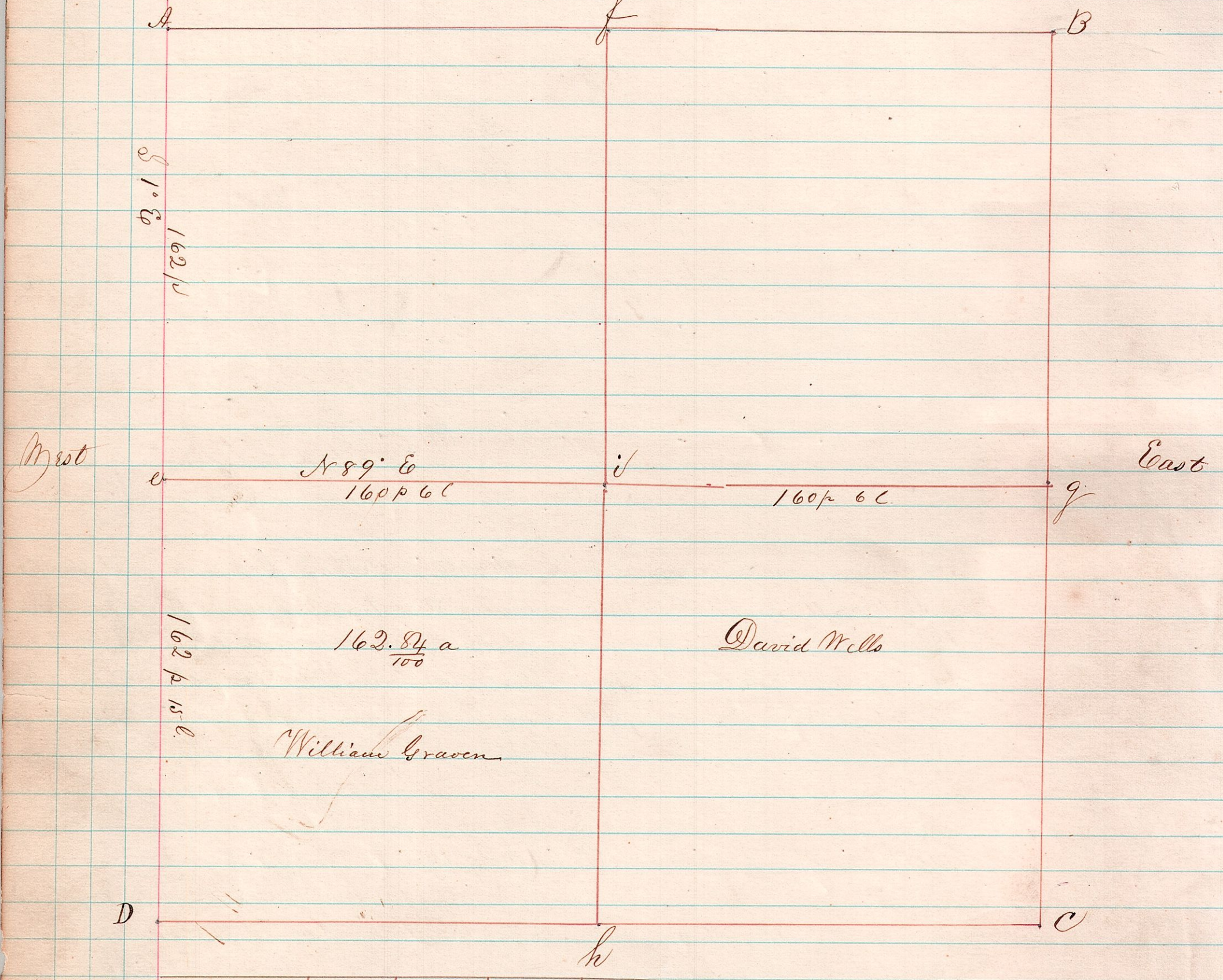


Sections 25 & 26 Township 18 Range 14.

A Survey made for Aquilla Hughes and others on the 8th day of March A.D. 1871. Commencing at North West corner of Section 25 - S 1° E 162 perches at West side of Section 25 gr post N 89° E 320 perches 12 links center gr post 160 per 60 N 89° W 162 perches 15 links center gr a Stone corner

North



	Bearing	Course	Diameter	Distance
	Trees	from corner	Inches	Links
e	W. Oak	N 66° W	24	65
	do	N 2° W	18	65
i	Hickory	S 58° E	4	17
	Hickory	N 81° E	4	20
j	W. Oak			
	W. Oak	N 62° W	18	36
h	B. Oak	N 69° W	18	27
	W. Oak	S 47° W	6	16

Scale of 20 perches to the inch

Original

So above is a correct plat of Section 25

Joshua Springle County Sur.