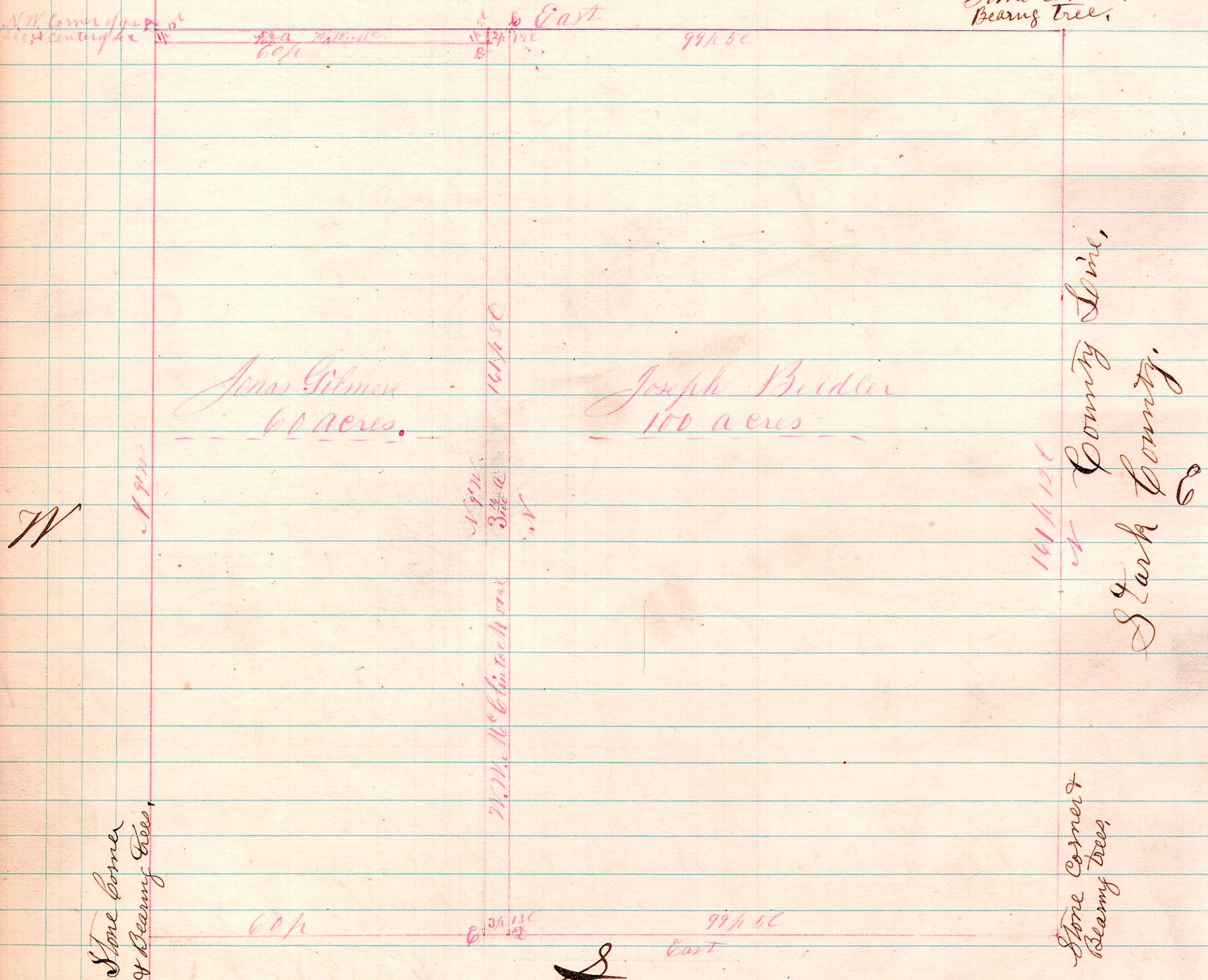


No 8

R J S A Survey of the South East quarter of Sec 25, Tp 15, R 11,
11 15 25 for W. W. McClintock.



- A Established center of sec 4 planted Stone. Witness Oak Apple. 4, S 45° W 35'
- B Stone. 24. S 30° E 24'
- C " Chestnut 36 S 74 E 13'
- D " " 68 N 15 W 1'
- E Stake " " N 56 E 2 1/2'

Wm. Thompson } Chamearney
 S. Pouts }
 S. Hurraw Axeman

The above is a correct plat of survey as made
 by me February 17th & 18th 1874.

W. H. Robinson
 County Surveyor