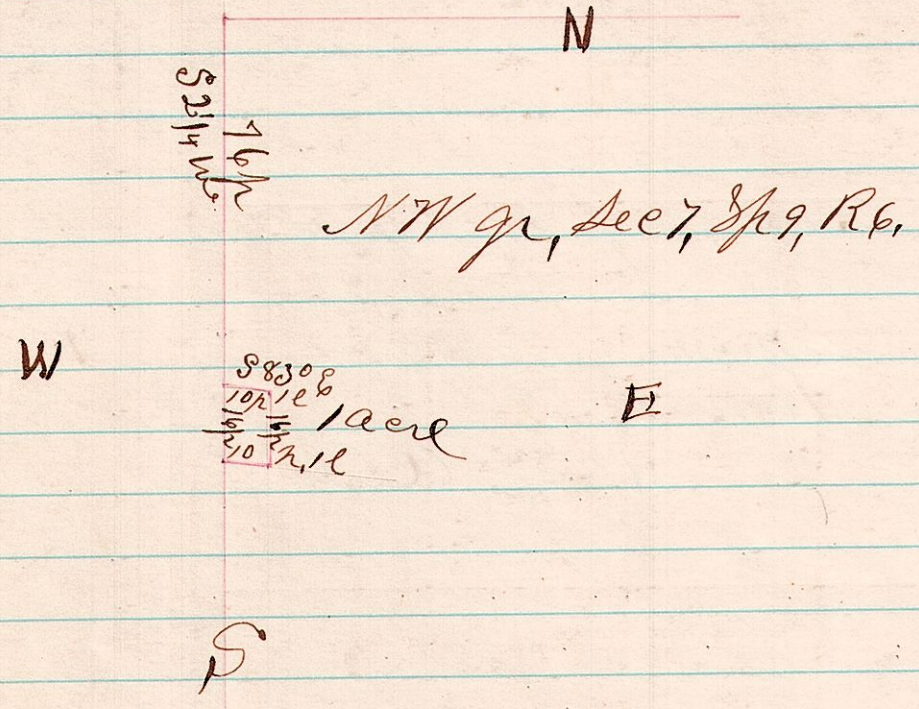


R 5 S
6 9 7

No 29

A. Survey made for the school directors of sub District no 1. of Hardy Tp. The same being part of the west part of the NW q. of Sec 7, Tp 9, R 6.

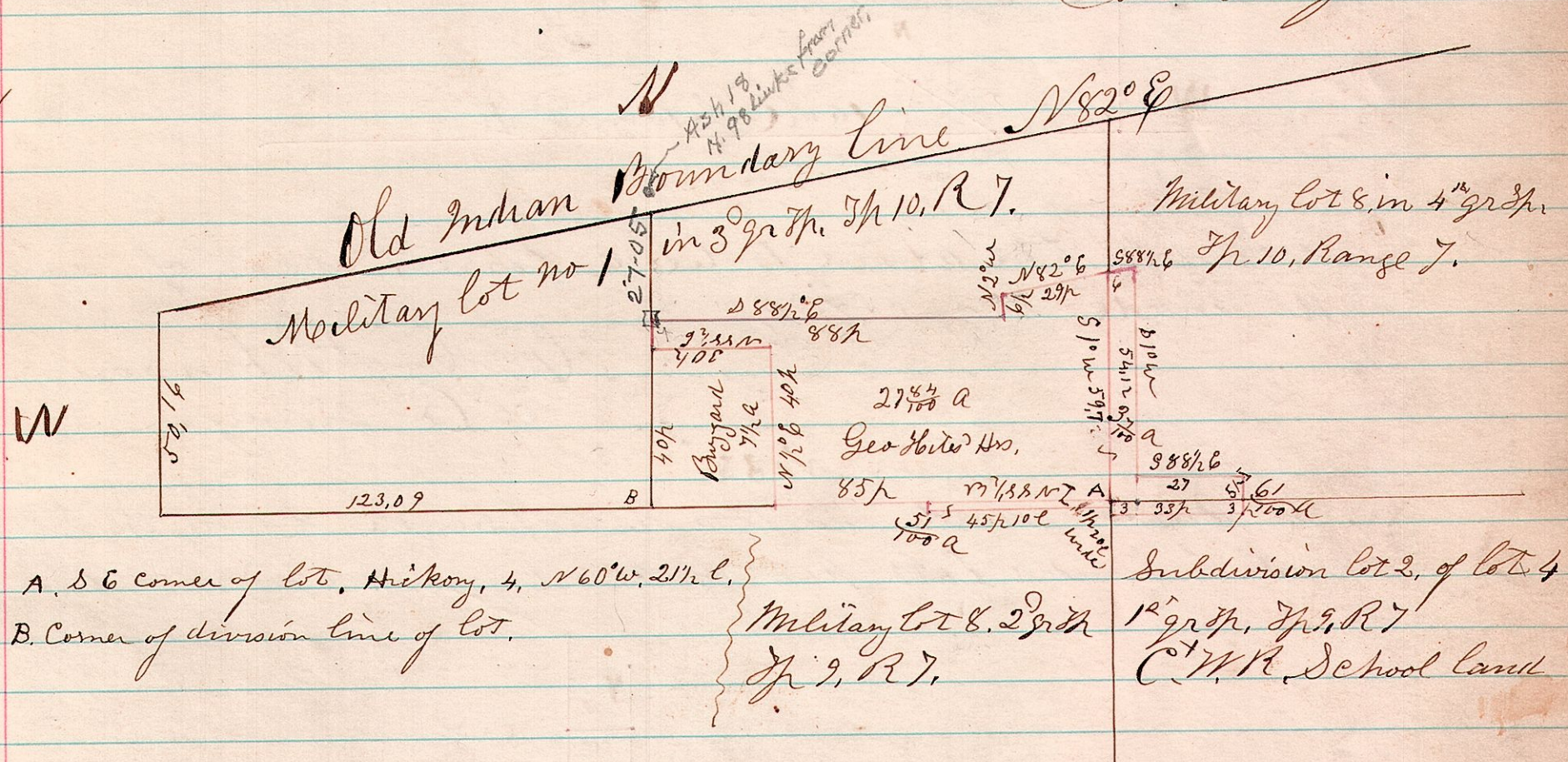


Surveyed the above of which I certify the same to be a correct plat. April 1874
J. H. Robinson
Co Surveyor

No 30

A. Survey made for administrator of est of Geo. Whites. April 1874
J. H. Robinson
Co Surveyor

7 10 14 8



A. S E corner of lot, Hickory, 4, N 60° W, 2 1/2 c.
B. Corner of division line of lot.
Military lot 8, 2 q. Tp 9, R 7.
Subdivision lot 2, of lot 4 12 q. Tp 9, R 7
C. T. R. School land

Surveyed the above 27 1/2 a piece & platted the 3 small pieces July 16th & 18th 1874.
J. H. Robinson
Co Surveyor