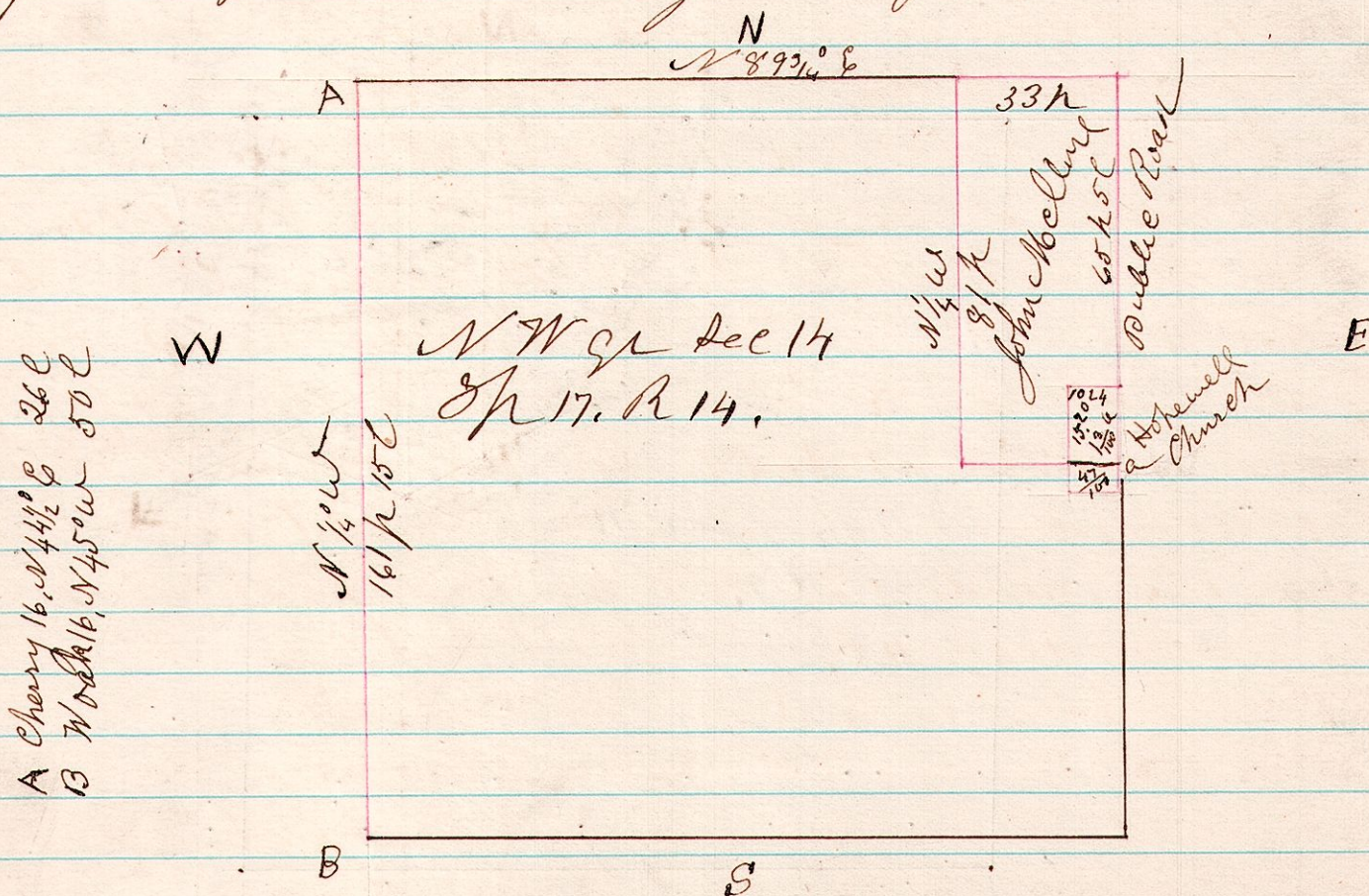


No 36

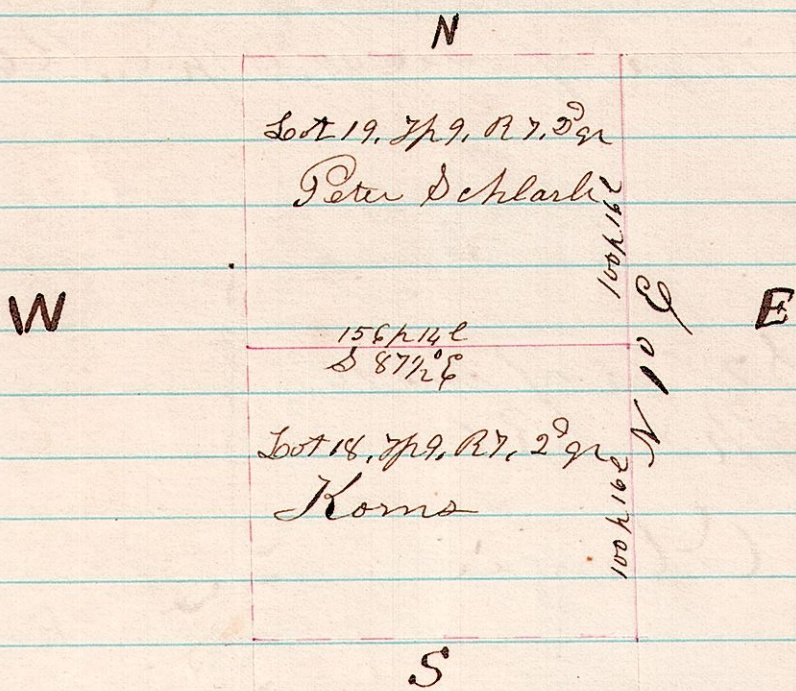
R D Survey made in the NW gr of sec 14, Tp 17, R 14  
 14 17 14 for Hopewell Church John McBlure, Robt McBlure & others



Surveyed the above red line May 1874  
 H. H. Robinson  
 Co Surveyor.

No 37

R J Set A Survey made for Korns & Schlarb, being  
 7 9 19 lines on Lots 18 & 19, in Tp 9, R 7, Military, 3<sup>d</sup> gr



The above is a correct plat of survey as made  
 May 22-1874  
 H. H. Robinson  
 Co Surveyor