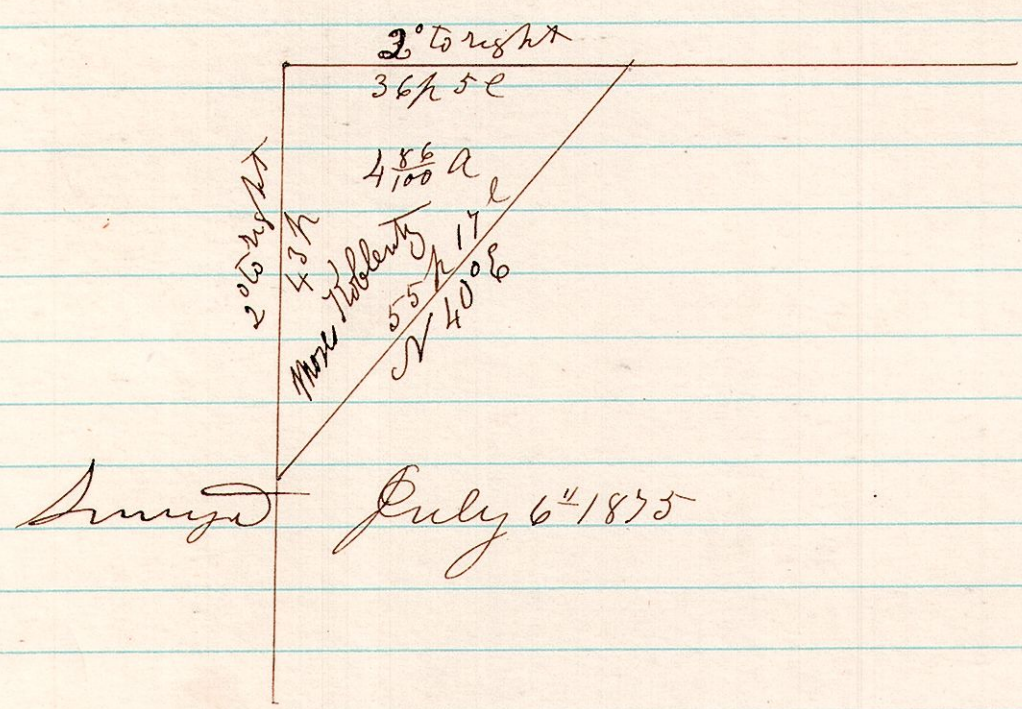


No 81

69.18 A Survey made for Moses Koblentz, being the north west part of the west half of the south west q<sup>r</sup> of Sec 18. Tp 9 R 6.

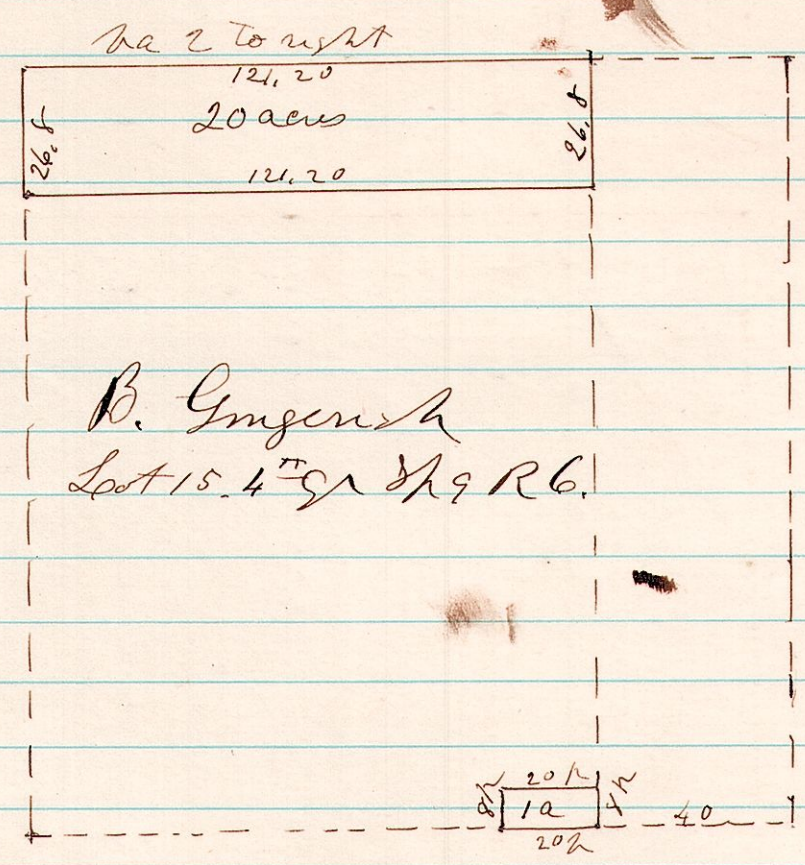


Survey July 6<sup>th</sup> 1875

H. H. Robinson  
Comr

No 82

69.15 A Survey made for B. Gingench being part of lot 15. 4<sup>th</sup> q<sup>r</sup> Tp 9 R 6. CT W R School land



Survey July 6<sup>th</sup> 1875

H. H. Robinson  
Comr