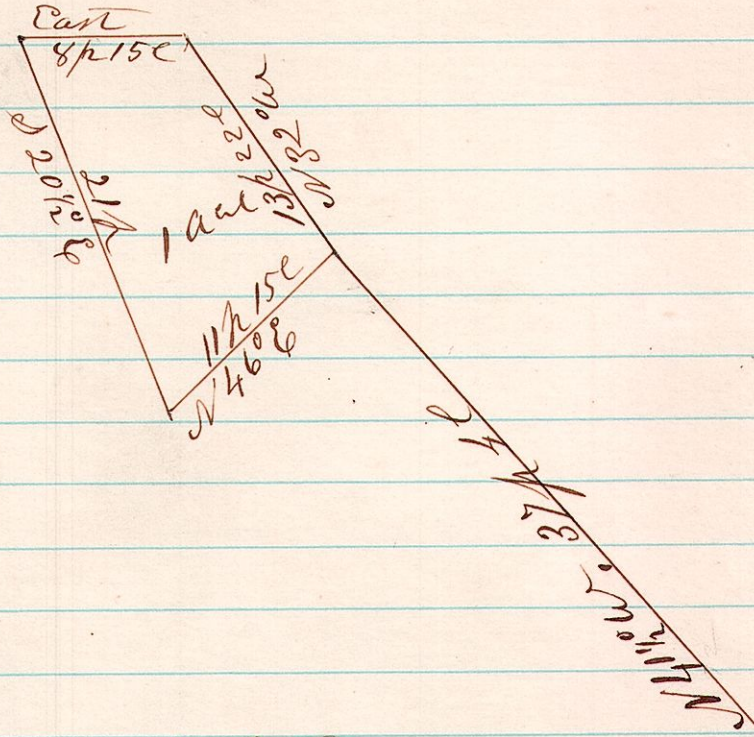


No 107

13 1436 A Survey made for Sub District (School) No 1 of Prairie Township Holmes Co O, being part of the N.W. 1/4 of Sec 36. T 14. R 13.



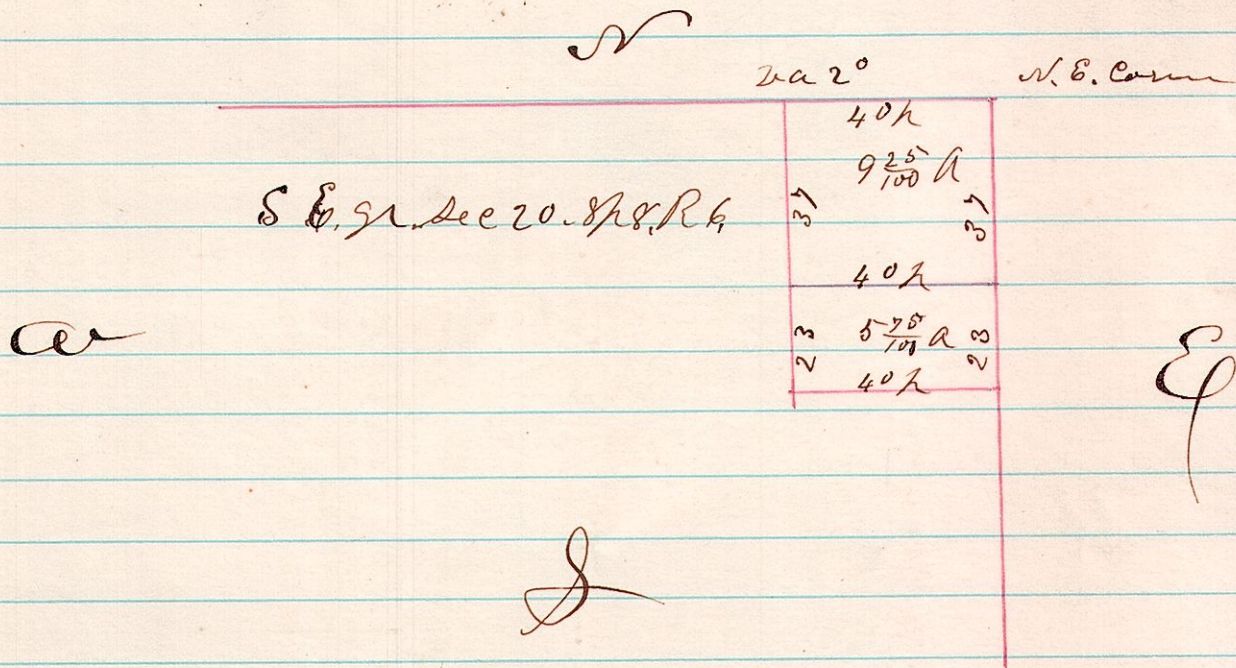
September 22nd 1875

H. H. Robinson
C. Surveyor

Center of Section

6 820 A Survey made for John Shaneman being in the South East quarter of Section 20. T 14. R 13

No 108



Oct 5th 1875

H. H. Robinson
C. Surveyor