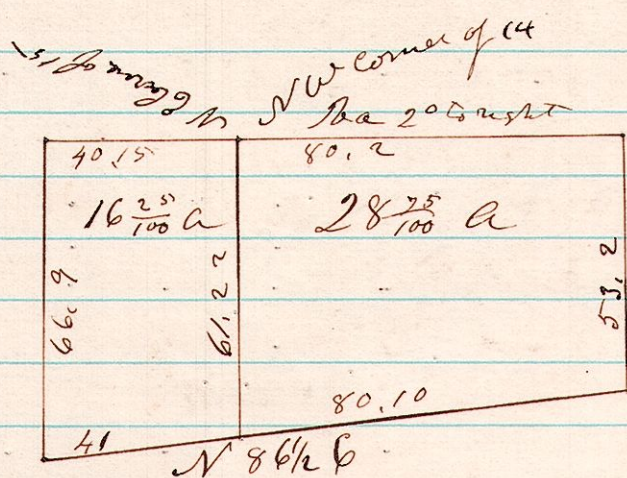


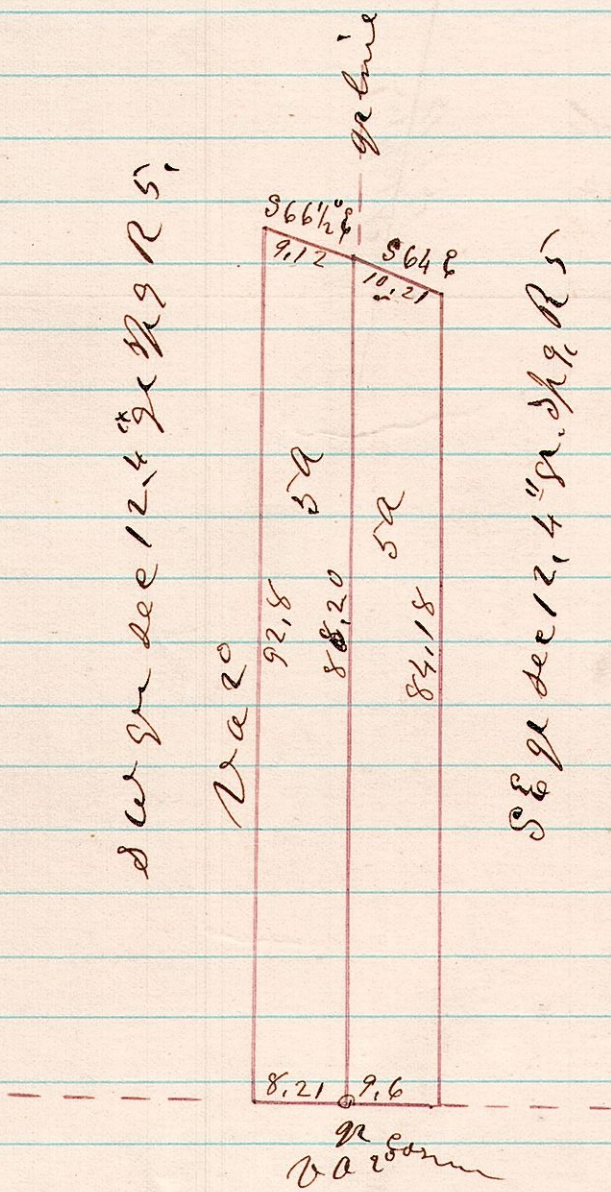
69 <sup>lot</sup><sub>14</sub><sup>15</sup> A Survey made for Daniel J. Miller, being the NE pt lot 15 + NW pt lot 14, 4<sup>th</sup> gr. T9 R6, Connecticut Western Reserve School Lands.



April 4<sup>th</sup> 1876

H. H. Robinson  
Co Surveyor

59 12 A Survey made for John M. Gode being the SE pt of the SW gr. & the SW pt of the SE gr of sec 12, 4<sup>th</sup> gr. T9, R5.



April 5<sup>th</sup> 1876

H. H. Robinson  
Co Surveyor