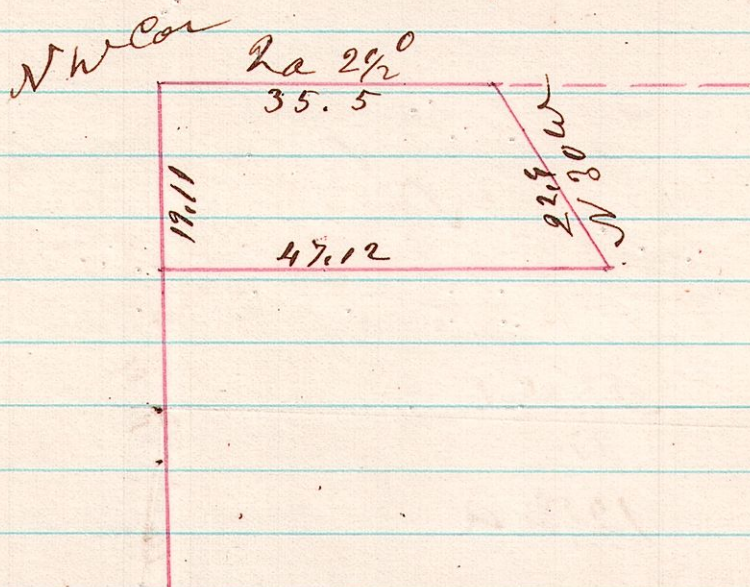


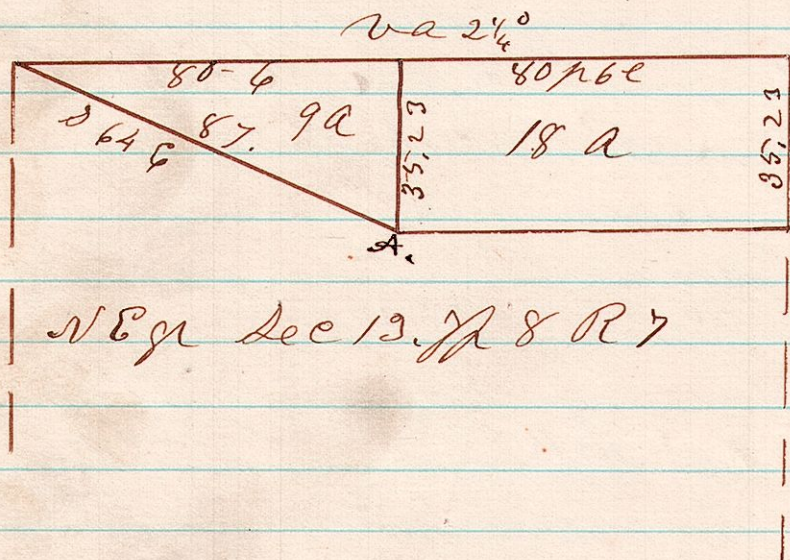
8811 A Survey made for N. Wigand, being the NW pt. of the East half of the NW q of sec 11. T8. R8. ¹⁶¹



Sept 20th 1876

H. H. Robinson
C. Surge

7813 A Survey made for Adam Urnson being the north part of the NE q of sec 13. T8. R7 ¹⁶²



A. Beck 6, S 20° W 11 l

Oct 18th 1876

H. H. Robinson
C. Surge