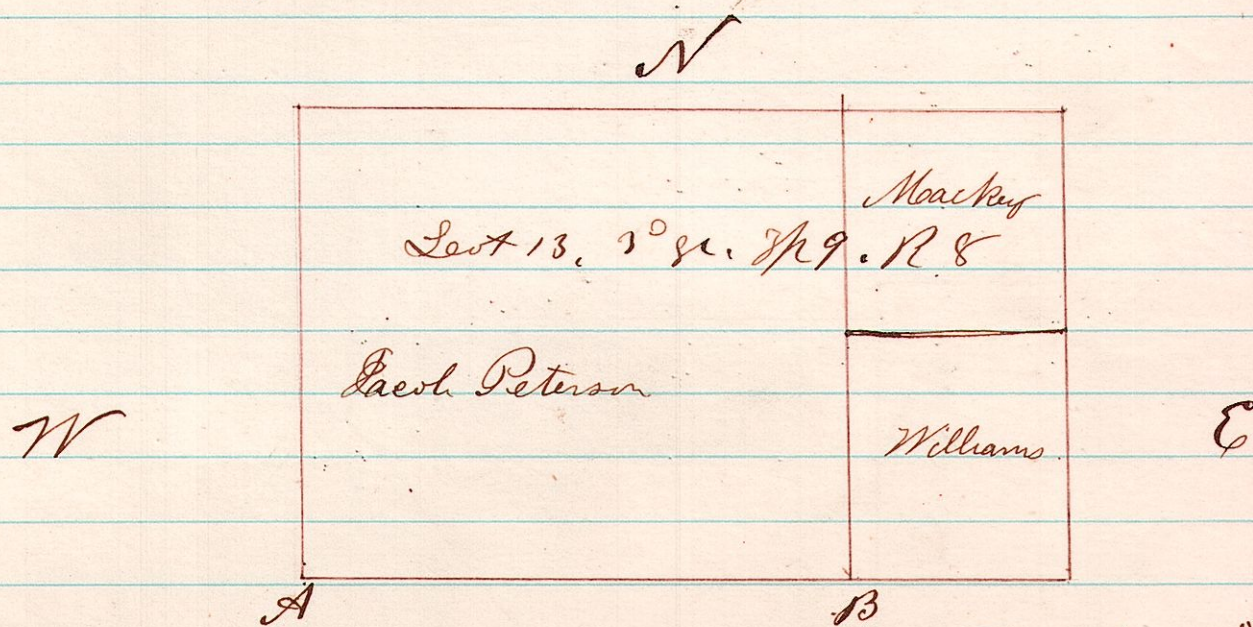


8913^{ca} A Survey made for Jacob Peterson being part of Military lot 13, 3^d gr. T⁹. R 8. 163

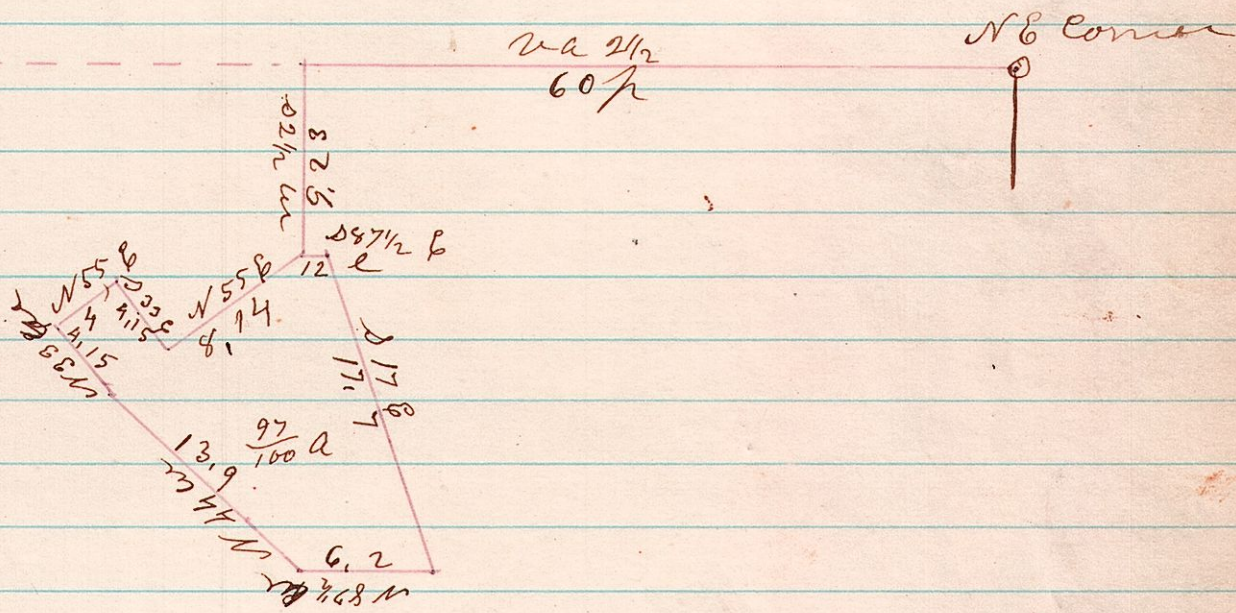


Stump of one original tree almost gone.
Look Chestnut, 16, The corner.

Nov 13th 1876

H. H. Robinson
Co Surveyor

682 A Survey made for Board of Education of Mechanics Tp. being ground for school house in 2nd District No and being part of the SW gr. of Sec 2, T⁸. R 6. 164



November 18th 1876.

H. H. Robinson
Co Surveyor