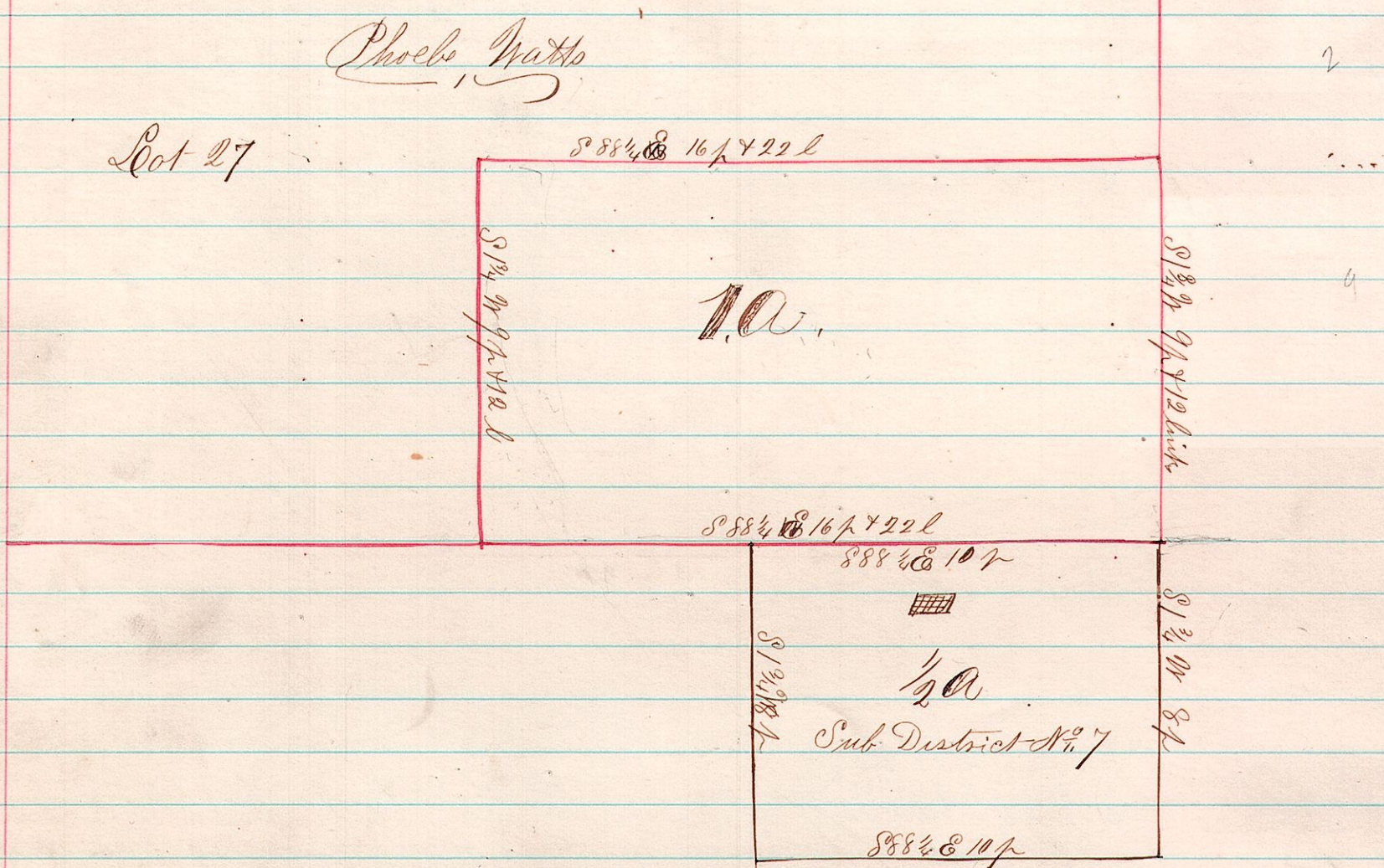


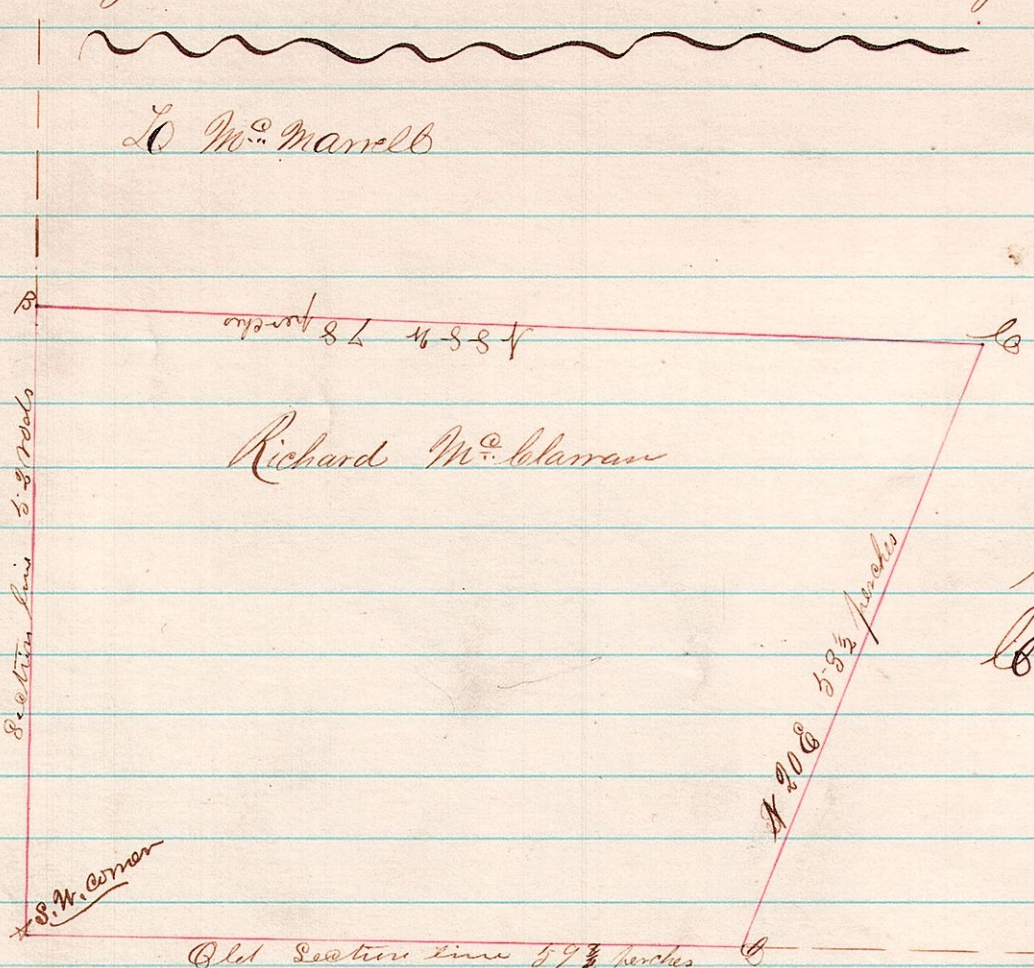
A Survey made for the Directors of Sub District No. 7 of Hardy Township ^{No. 173}
7 9 27²⁷ Holmes County Ohio of Military lot No. 27 in the 2^d Quarter Township 9 Range 7
The South East thereof



Surveyed May 5th 1877.

J. B. Calhoun
County Surveyor
No. 174

15 20 35



Witness trees at A
 Cottonwood 11 1/2
 Oak
 Cotton wood 11 1/2 S 21 W 40 Links
 W. Oak .13. S 71 1/2 W 39 1/2

A Survey made for Richard M. McClarran commencing at the S. W. corner of section 35-7-20 of Range 16 and following the meek's bounds as laid out in the above plat and as designated in his deed took witness trees at the N. E. corner of said piece as set forth above (Line A.B. is wrong see 466)

Surveyed May 10th 1877

J. B. Calhoun
County Surveyor

See Page 466 this book