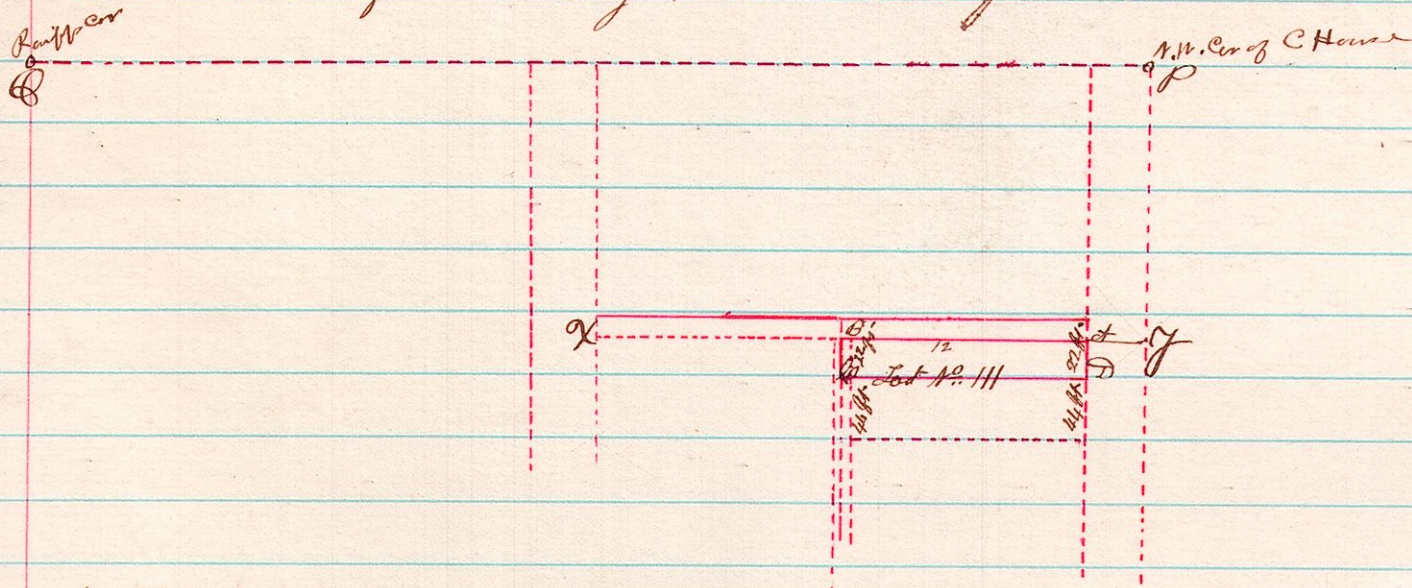


7 9 12 ^{Year 1872} A Survey to establish line C.D. between A Genser & John Hower in Lot No 111 in town of Millersburg Holmes County Ohio

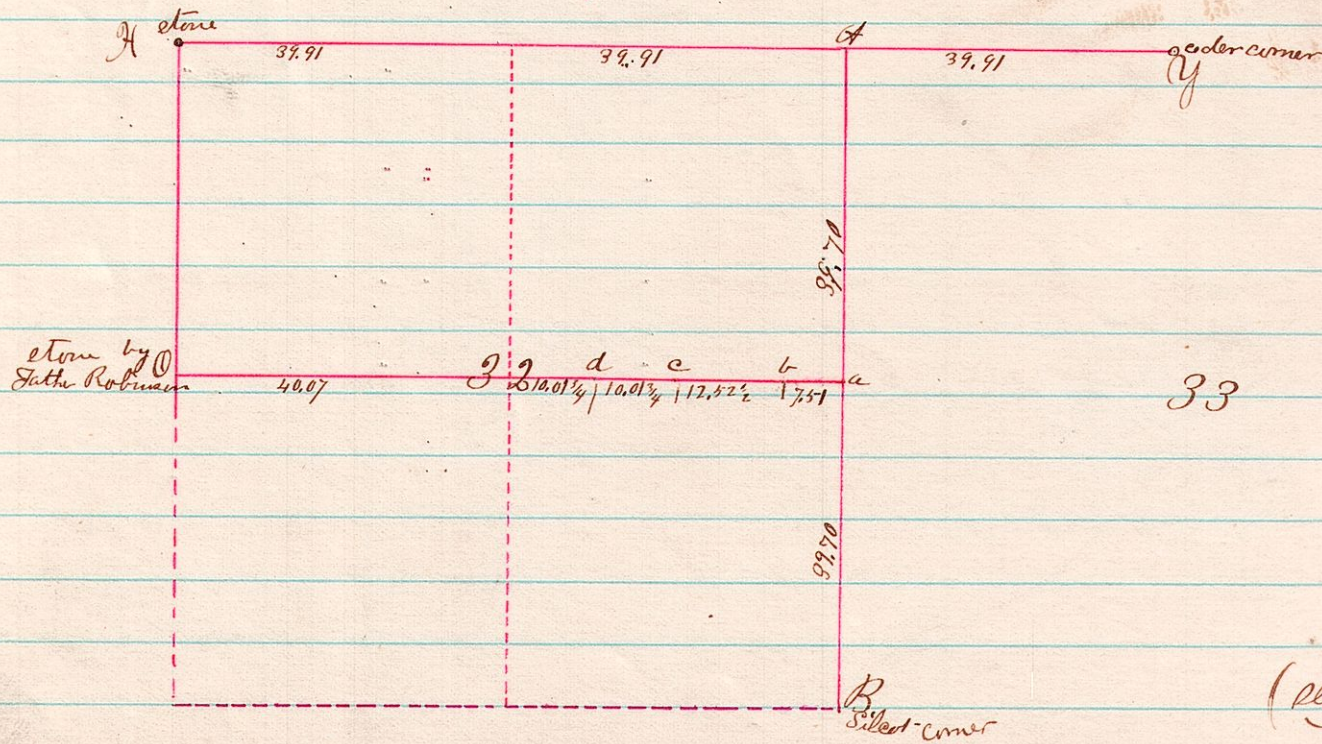


Notice was served on Mr John Hower according to law and after 20 days notice I proceeded with the assistance of H. H. Robinson (sworn) and did establish said line according to law from established stones at Q & P Done in iron about 9 ins long at A & B on the line by no measurements were taken to locate them on lines running North & South the dispute being only on the line running East & West nothing planted at C & D they being just 22 feet South B & A respectively

Surveyed May 29th 1878

J. B. Calhoun
County Surveyor

15-20 32 A legal Survey made for Morgan Prokman Et al for the purpose of establishing the corner on the E line and exact corners at W, E & S.



33

(see next page)