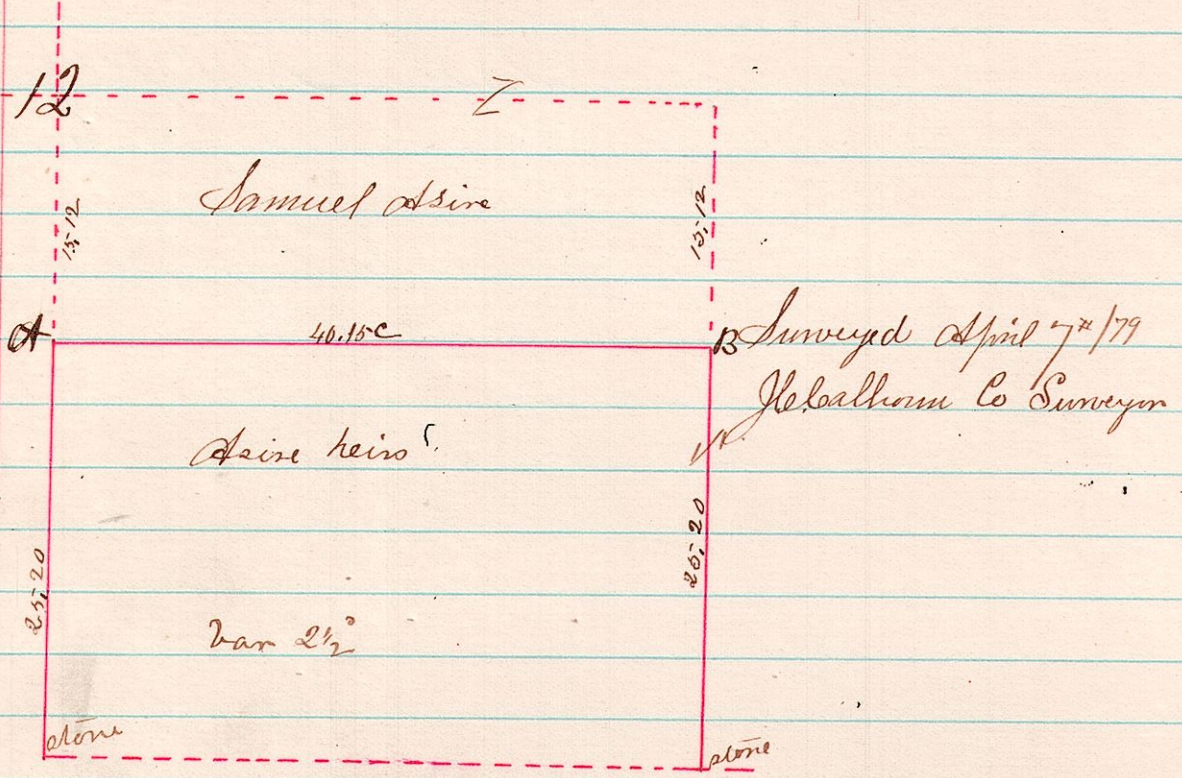
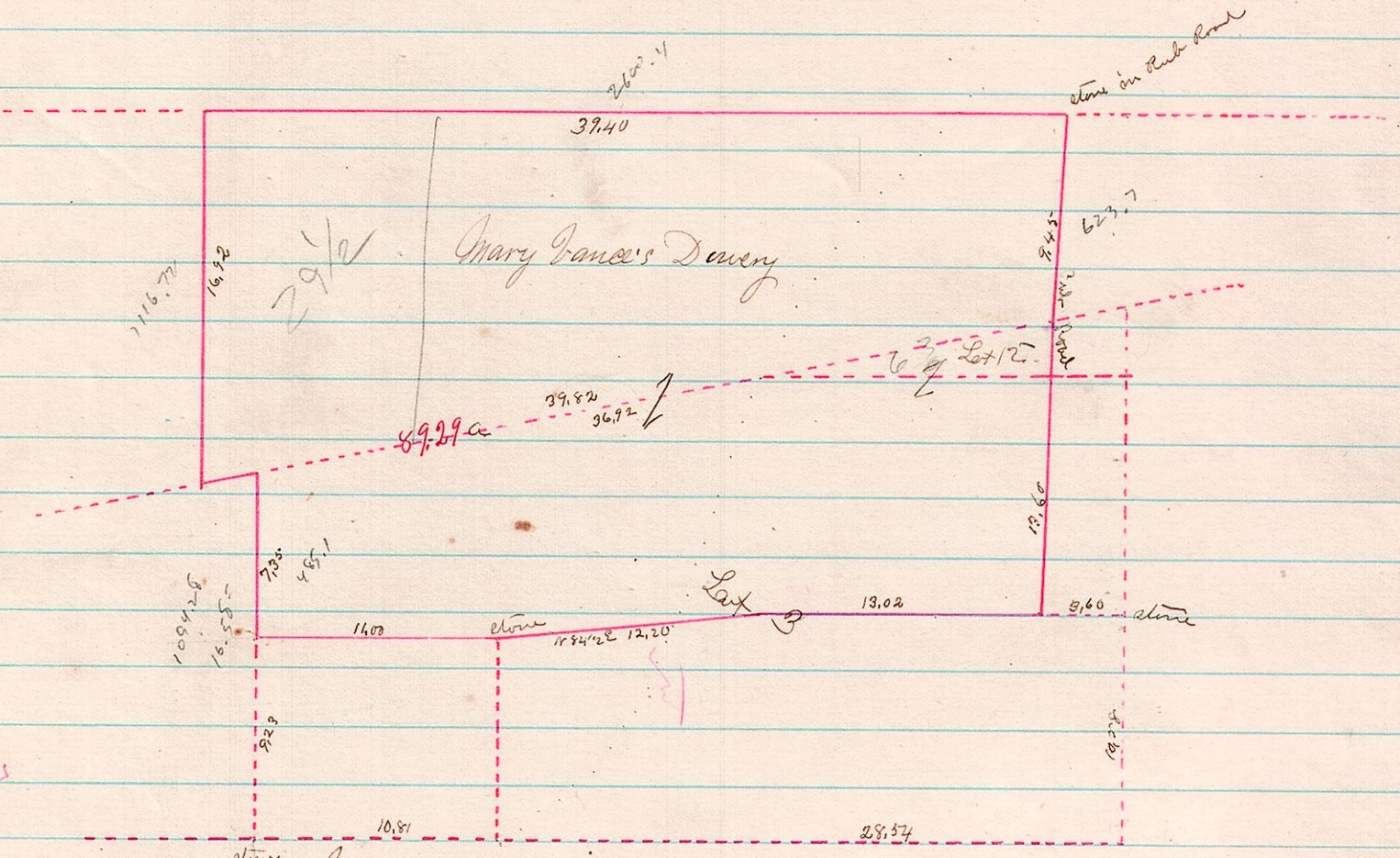


6 8 12 8 E 2, Surveyed for Samuel Asire and Asires heirs Line A.B. run north

226



15 19  
 8 14 17 26 Force  
 9 9 12 23 20 2r



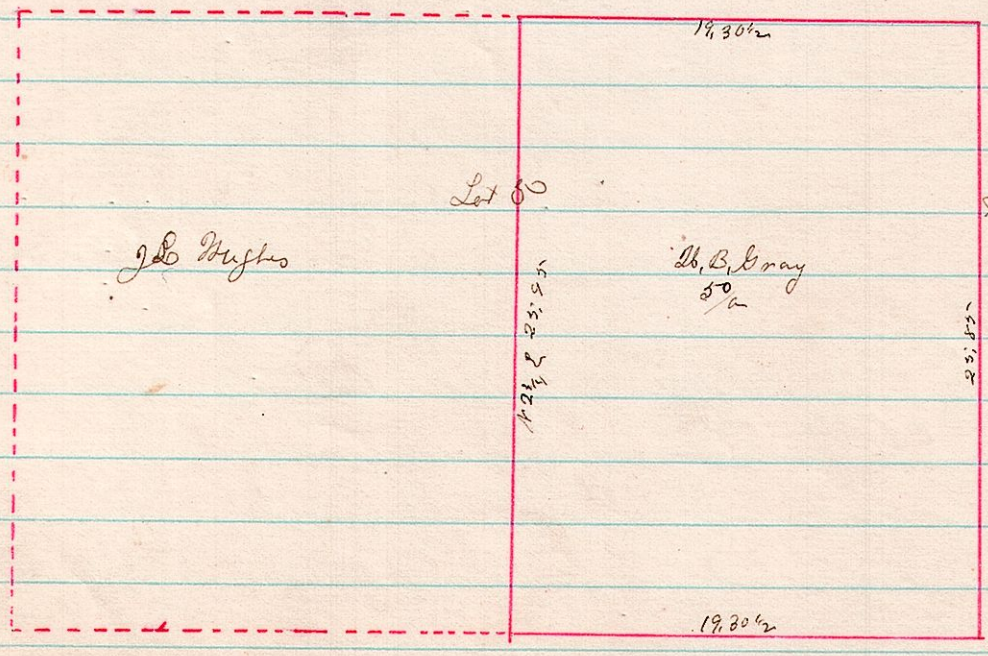
227

The above is a flat of Mary Dancer's Dower assigned to her on the 23 day of April 1879 by J. L. Hughes, J. B. Gray & D. Kerr then good disinterested Judicious free holders according to the Will of John Dancer dec'd - Commissioners were duly sworn

J. G. Ballou Co Surveyor

228

9 9  
 Lot 5  
 20 2r



Surveyed for J. L. Hughes 4/23/79  
 J. G. Ballou  
 Co Surveyor