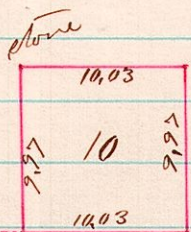


233

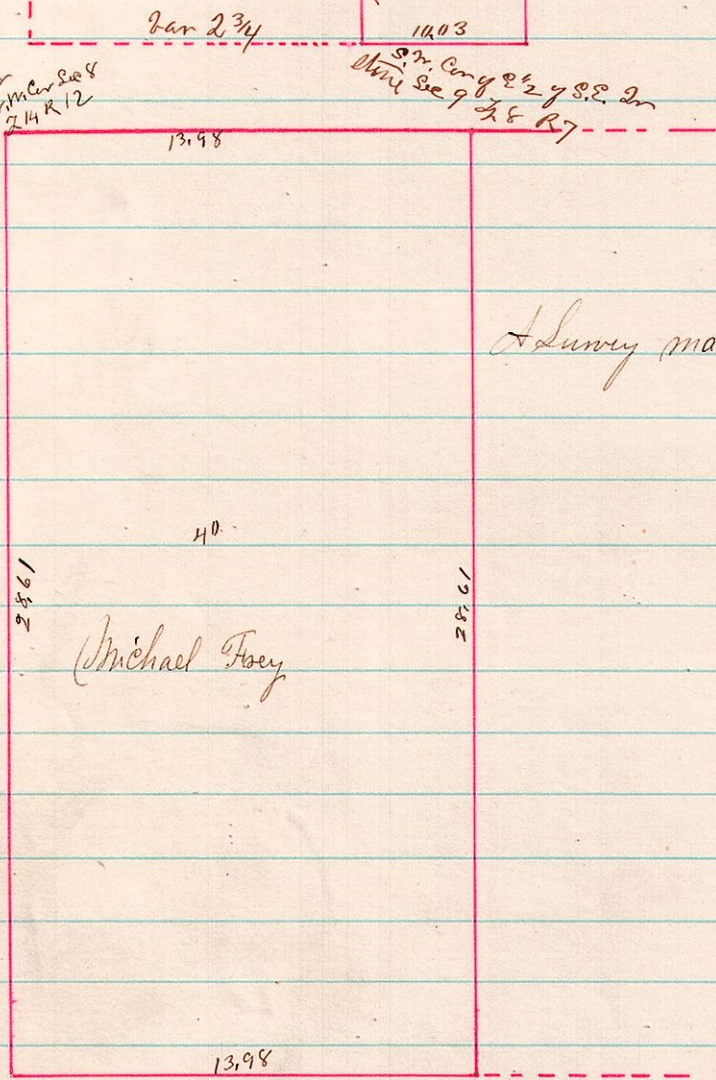
7 8 9 A Survey made for John B Spring of 10 acres out of the South West corner of the E 1/2 of the South East Quarter Section No 9 T 8 R 7



Surveyed August 14th 1879
J. B. Callhorn
County Surveyor

234

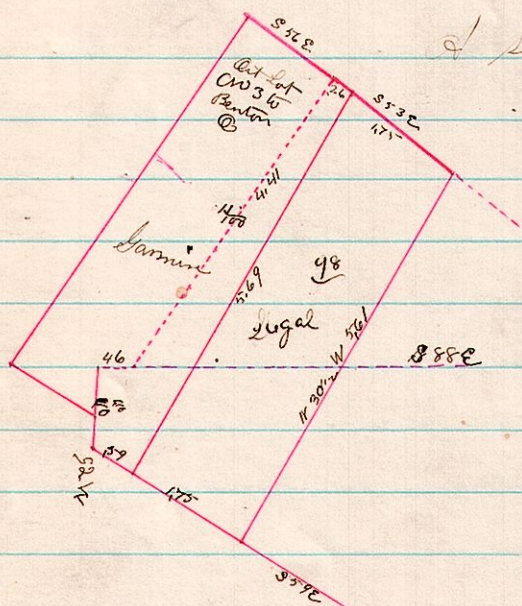
14 12 8 Survey
McCur Sue 4
2 14 R 12



A Survey made for Michael Foey & as Snyder apt for John Austin
Surveyed 8/17/79 J. B. Callhorn County Surveyor

235

6 10 4th 2nd 18



A Survey made for E Row & others
Surveyed August 18th 1879
J. B. Callhorn Co Surveyor