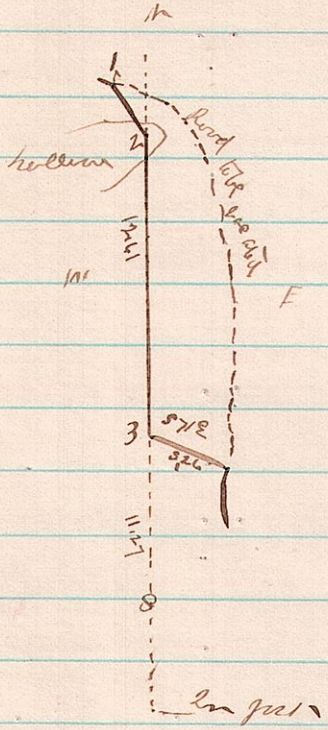


No 269 5-8 1/4 1/2 Road

S.R. 557

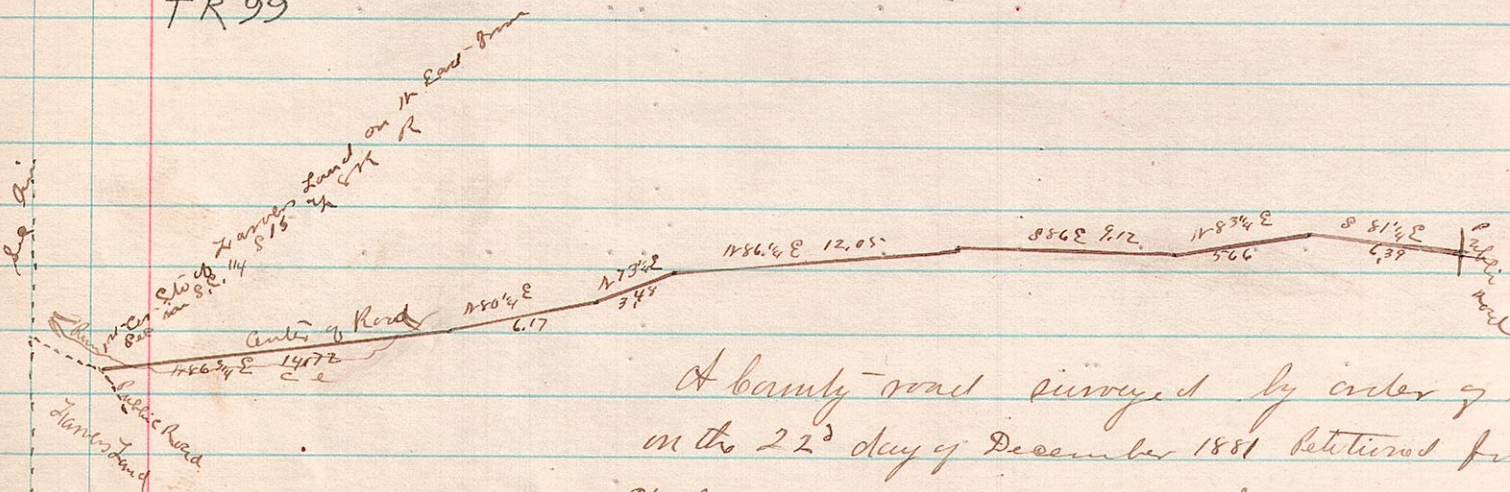
Witness lines at Station No 2 N 10 25 N 12 1/4 E 93
30 15 N 84 1/2 E 57



A Road Surveyed for County Commissioners & Petitioners for
 by John B Miller Et al Surveyed at Marsh session 1881
 James B. Alborn
 County Surveyor

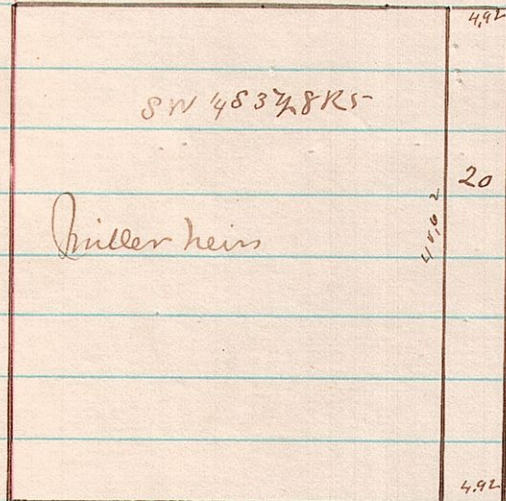
No 270 5-8 1/4 5/8 1/4

TR 99



A county road surveyed by order of County Commissioners
 on the 22^d day of December 1881 Petitioners for by John B. Miller
 Et al
 James B. Alborn
 County Surveyor
 No 263

No 271 5-8 3



A Survey made for Benjamin Helmuth admr of Miller of 20 acres
 of the East side of SW 1/4 Sec 37, 8 R 5
 Surveyed Nov 15/84 James B. Alborn
 County Surveyor