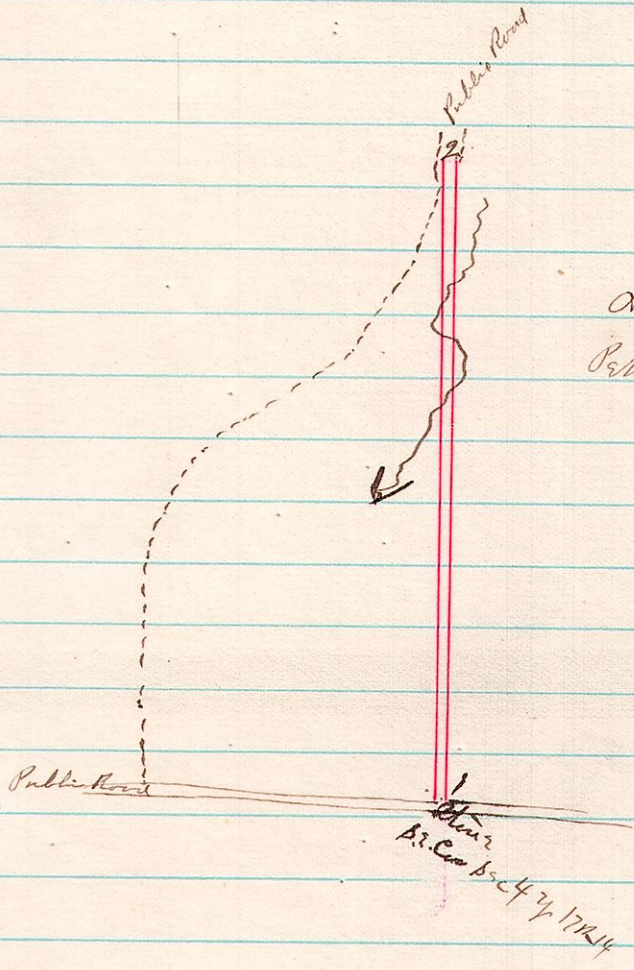


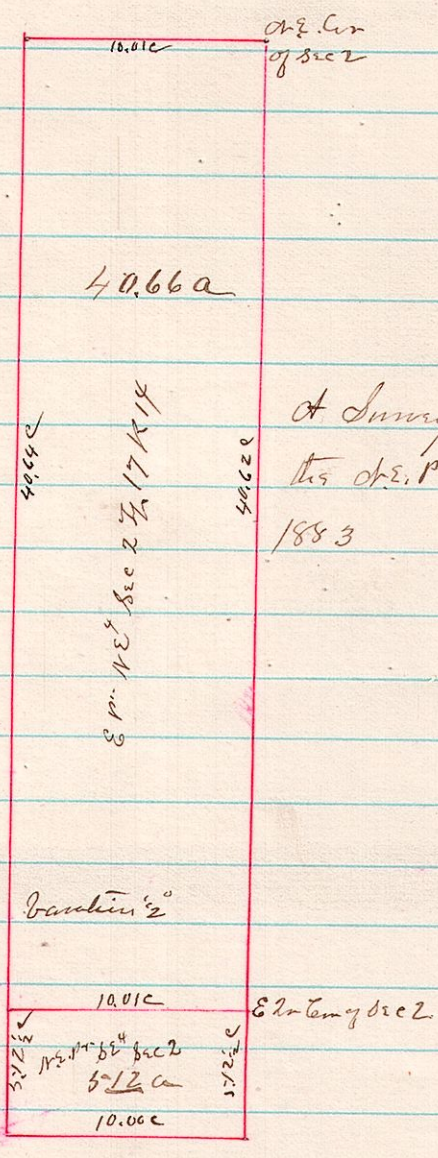
399 14 17 4 SE⁴ Road
CR 51



Ch 1/2
1 in SE⁴ Corner Sec 4 1/2 R 14
1 to 2 Ch 1/2 E 13.45E

A Survey made of a County by order of the County Commissioners
Petitioned for by Eliza Williams et al on the 14th day of Sept. 1883
James C. Callahan Co Surveyor

400 14 17 2 SW⁴ + SE⁴



A Survey made for Albert Macklin of the E 1/2 NE⁴ +
the SW⁴ + SE⁴ Sec 2 1/2 R 14 on the 14th day of September
1883
James C. Callahan County Surveyor